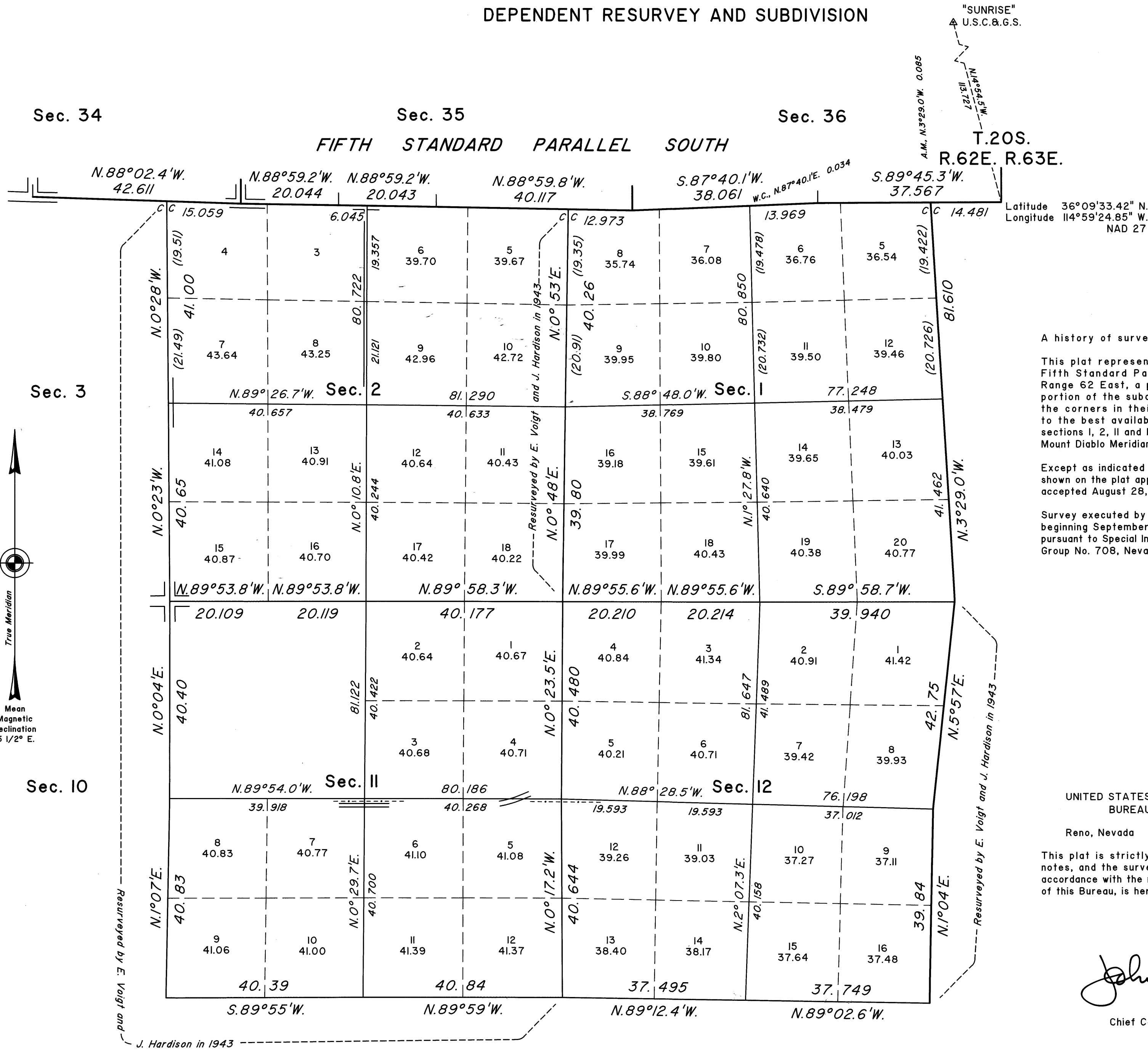


TOWNSHIP 21 SOUTH, RANGE 62 EAST, OF THE MOUNT DIABLO MERIDIAN, NEVADA
DEPENDENT RESURVEY AND SUBDIVISION

OFFICIALLY FILED
NEVADA STATE OFFICE
at 10:00 AM on SEPTEMBER 8, 1994



Latitude 36°09'33.42" N.
Longitude 114°59'24.85" W.
NAD 27

A history of surveys is contained in the field notes.

This plat represents the dependent resurvey of the Fifth Standard Parallel South, through a portion of Range 62 East, a portion of the east boundary and a portion of the subdivisional lines, designed to restore the corners in their true original locations according to the best available evidence, and the subdivision of sections 1, 2, 11 and 12, Township 21 South, Range 62 East, Mount Diablo Meridian, Nevada.

Except as indicated hereon, the lottings and areas are as shown on the plat approved November 23, 1881, and the plat accepted August 28, 1943.

Survey executed by Robert A. Pratt, Cadastral Surveyor, beginning September 10, 1991, and completed July 11, 1994, pursuant to Special Instructions dated September 6, 1991, for Group No. 708, Nevada.

UNITED STATES DEPARTMENT OF THE INTERIOR
BUREAU OF LAND MANAGEMENT

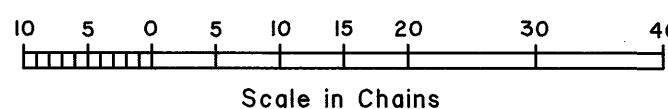
Reno, Nevada August 30, 1994

This plat is strictly conformable to the approved field notes, and the survey, having been correctly executed in accordance with the requirements of law and the regulations of this Bureau, is hereby accepted.

For the Director

John J. Parrish

Chief Cadastral Surveyor, Nevada



RHT

T.21S.,R.62E.,M.D.M.