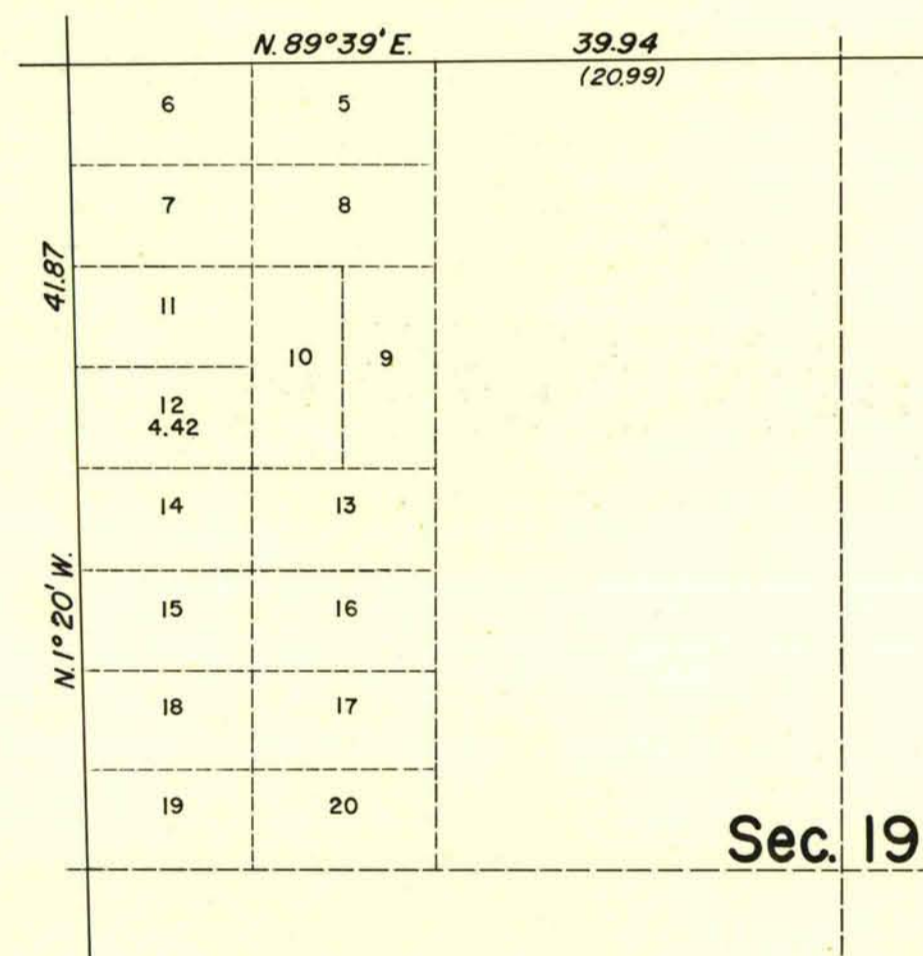


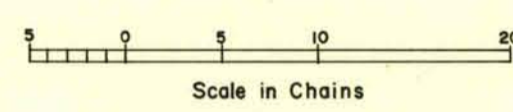
TOWNSHIP 21 SOUTH, RANGE 62 EAST, OF THE MOUNT DIABLO MERIDIAN, NEVADA.  
SUPPLEMENTAL PLAT OF SECTION 19

RECEIVED  
LAND AND SURVEY OFFICE  
RENO, NEVADA

APR 9 1956  
7 8 9 10 11 12 13 14 15



This supplemental plat of section 19, T. 21 S., R. 62 E., changing the designation of the  $\frac{1}{2}$ SW $\frac{1}{4}$ NW $\frac{1}{4}$  from Lot 10 to Lot 12 is based upon plat approved September 12, 1950.



UNITED STATES DEPARTMENT OF THE INTERIOR  
BUREAU OF LAND MANAGEMENT  
Washington, D. C. December 5, 1955

This plat, showing amended lottings, having been correctly prepared in accordance with the regulations, is hereby accepted.

For the Director

Acting Cadastral Engineering  
Staff Officer

M.S.

M.S.

2751-B Sec. 19-T. 21 S., R. 62 E.