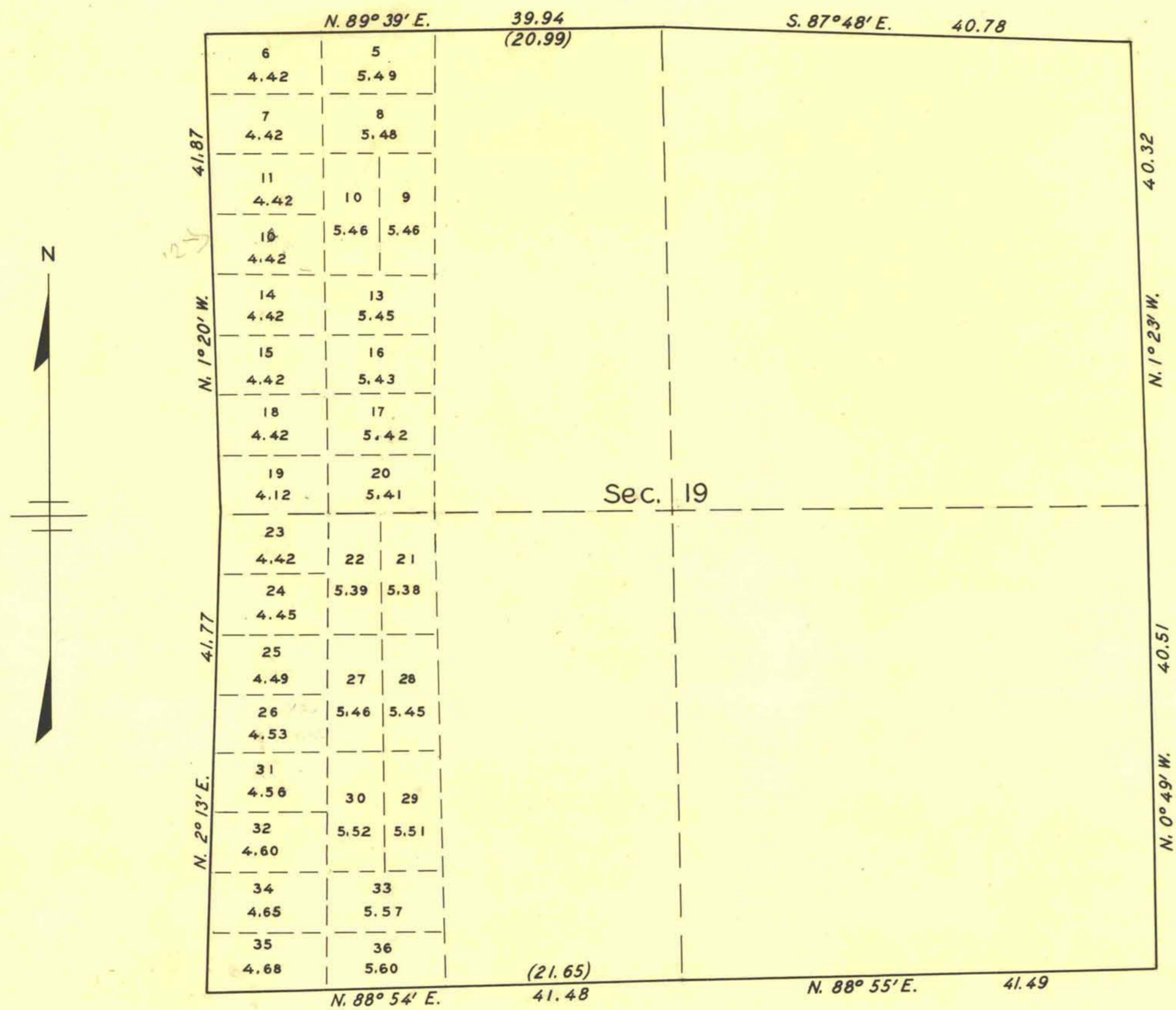


TOWNSHIP 21 SOUTH, RANGE 62 EAST, MOUNT DIABLO MERIDIAN, NEVADA.

SUPPLEMENTAL PLAT OF SECTION 19



THIS PLAT, SHOWING A SUBDIVISION OF ORIGINAL LOTS 1, 2, 3, AND 4, SEC. 19, T. 21 S., R. 62 E., M.D.M., NEVADA, IS BASED UPON THE PLAT APPROVED AUGUST 18, 1943.

UNITED STATES DEPARTMENT OF THE INTERIOR  
BUREAU OF LAND MANAGEMENT  
WASHINGTON, D. C., SEPTEMBER 12, 1950

THIS PLAT, SHOWING AMENDED LOTTINGS, HAVING BEEN CORRECTLY PREPARED IN ACCORDANCE WITH THE REGULATIONS, IS HEREBY ACCEPTED.

FOR THE DIRECTOR

*William F. Richards*

CHIEF, BRANCH OF SURVEYS.