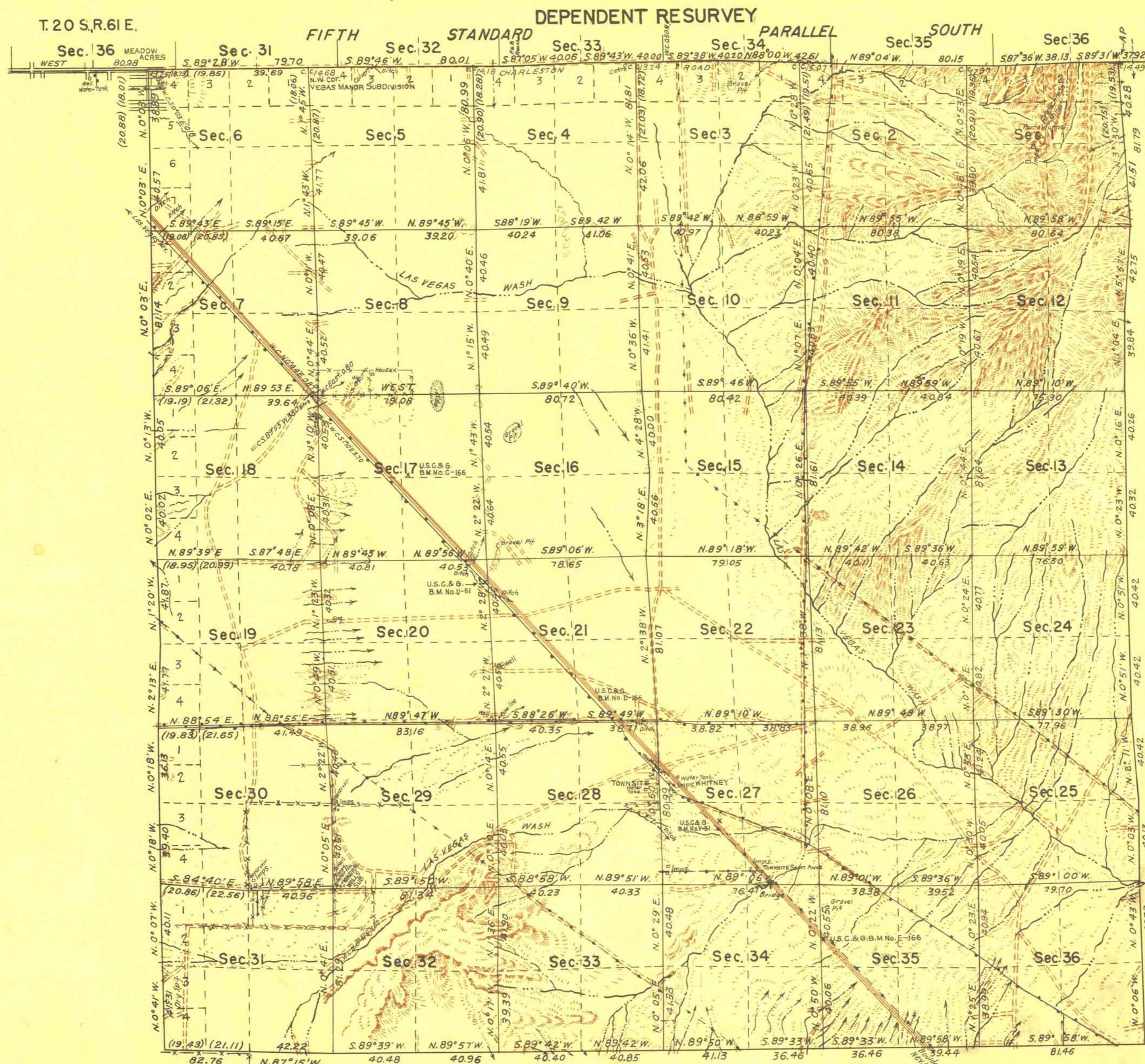


TOWNSHIP N^o 21 SOUTH, RANGE N^o 62 EAST, OF THE MOUNT DIABLO MERIDIAN, NEVADA.



Memorandum

This plat of the resurvey of Township N^o 21 South, Range N^o 62 East, delineates a retracement and reestablishment of the lines of the original survey as shown upon the plat approved Nov. 23, 1881 in their true original position according to the best available evidence of the position of the original corners; all differences between the measurements shown on the original plat and those derived in the retracement have been distributed proportionally between accepted corners in accordance with surveying rules; reference will be made to the original plat for the showing of the areas and more detailed descriptions of the various smaller subdivisions.

Authority for this resurvey is contained in General Land Office memorandum 1907165 'E' dated July 14, 1942.

Latitude 36° 04' N.
Longitude 114° 59' 30" W.

UNITED STATES DEPARTMENT OF THE INTERIOR
GENERAL LAND OFFICE

Denver, Colorado, Aug. 18, 1943
This plat of Township N^o 21 South, Range N^o 62 East, of the Mount Diablo Meridian Nevada is strictly conformable to the field notes of the survey thereof which have been examined and approved.

Trusell H. Allen
Acting Assistant Supervisor of Surveys.

Washington D. C., Aug. 28, 1943
The survey represented by this plat having been correctly executed in accordance with the requirements of law and the regulations of this office is hereby accepted.

Jord David Wolfson
Assistant Commissioner.

LINES DESIGNATED	BY WHOM SURVEYED	GROUP N ^o	DATE OF SPECIAL INSTRUCTIONS	WHEN SURVEYED	
				BEGUN	COMPLETED
Exterior N,S,E,W Subdivisional	E.Voigt & J.W.Hardison	336	August 11, 1942	Feb. 2, 1943	May 8, 1943
"	"	"	"	"	"

Scale 1 inch equals 40 Chains Area resurveyed 22857.41 Acres

7200 165 E
 84 130
 Lat. 36° 04' 33" N
 Long. 114° 59' 30" W
 See field notes page 3