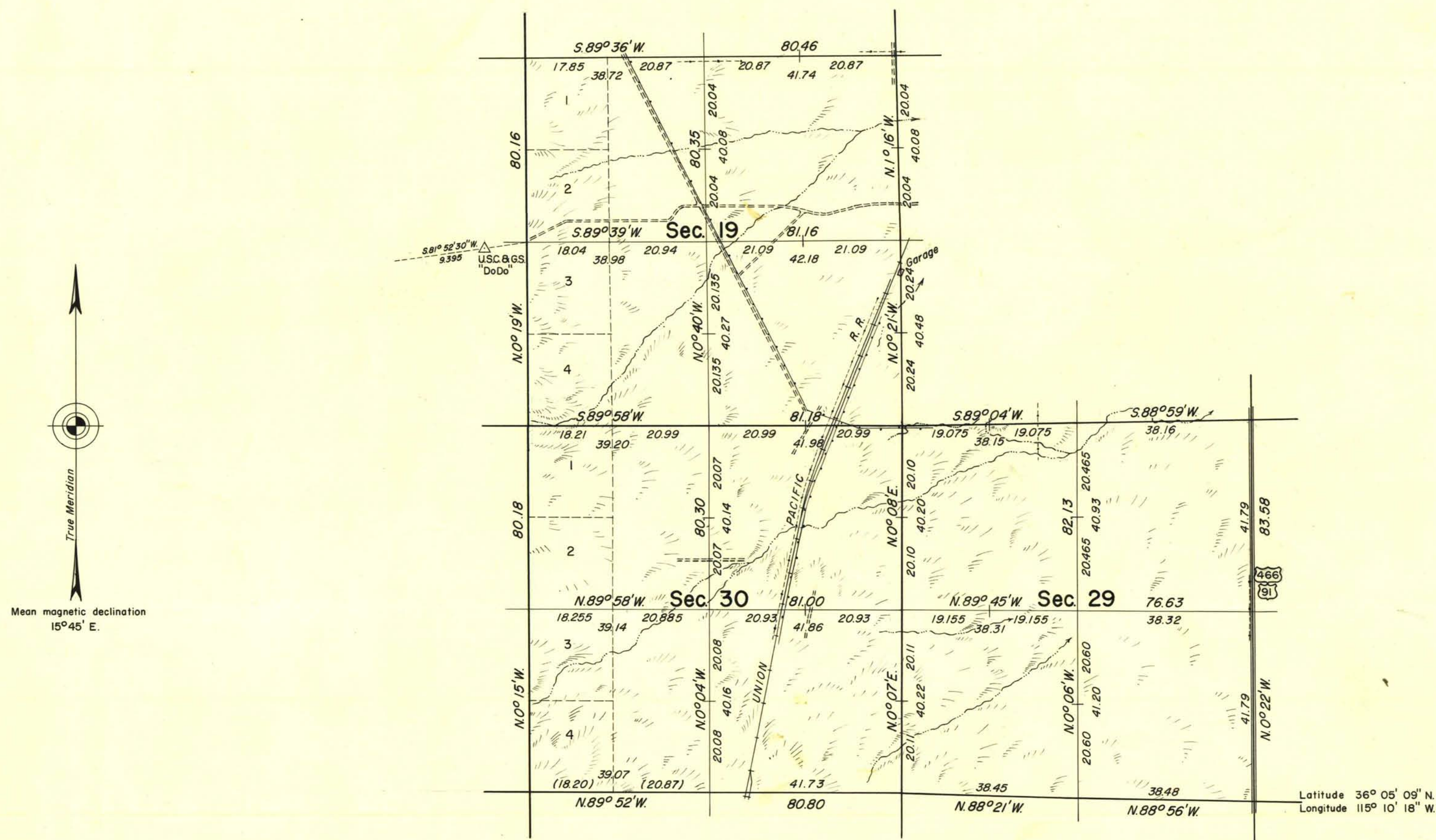


**TOWNSHIP 21 SOUTH, RANGE 61 EAST, OF THE MOUNT DIABLO MERIDIAN, NEVADA.**  
**SUBDIVISION OF SECTIONS 19, 29, AND 30**



History of earlier surveys is contained in the field notes.

This plat represents the dependent resurvey of a portion of the subdivisional lines designed to restore the corners in their original locations according to the best available evidence and the survey of the subdivision of secs. 19, 29, and 30, T. 21 S., R. 61 E., Mount Diablo Meridian, Nevada.

Survey executed by Paul K. Russell, April 19 to 22, 1957 under supplemental special instructions dated April 10, 1957 for Group 357, Nevada.

Areas are as shown on plat approved November 23, 1881.

UNITED STATES DEPARTMENT OF THE INTERIOR  
BUREAU OF LAND MANAGEMENT  
Washington, D.C. March 24, 1959

This plat is strictly conformable to the approved field notes, and the survey, having been correctly executed in accordance with the requirements of law and the regulations of this Bureau, is hereby accepted.

For the Director

*Earl G. Harrington*  
Cadastral Engineering Staff Officer