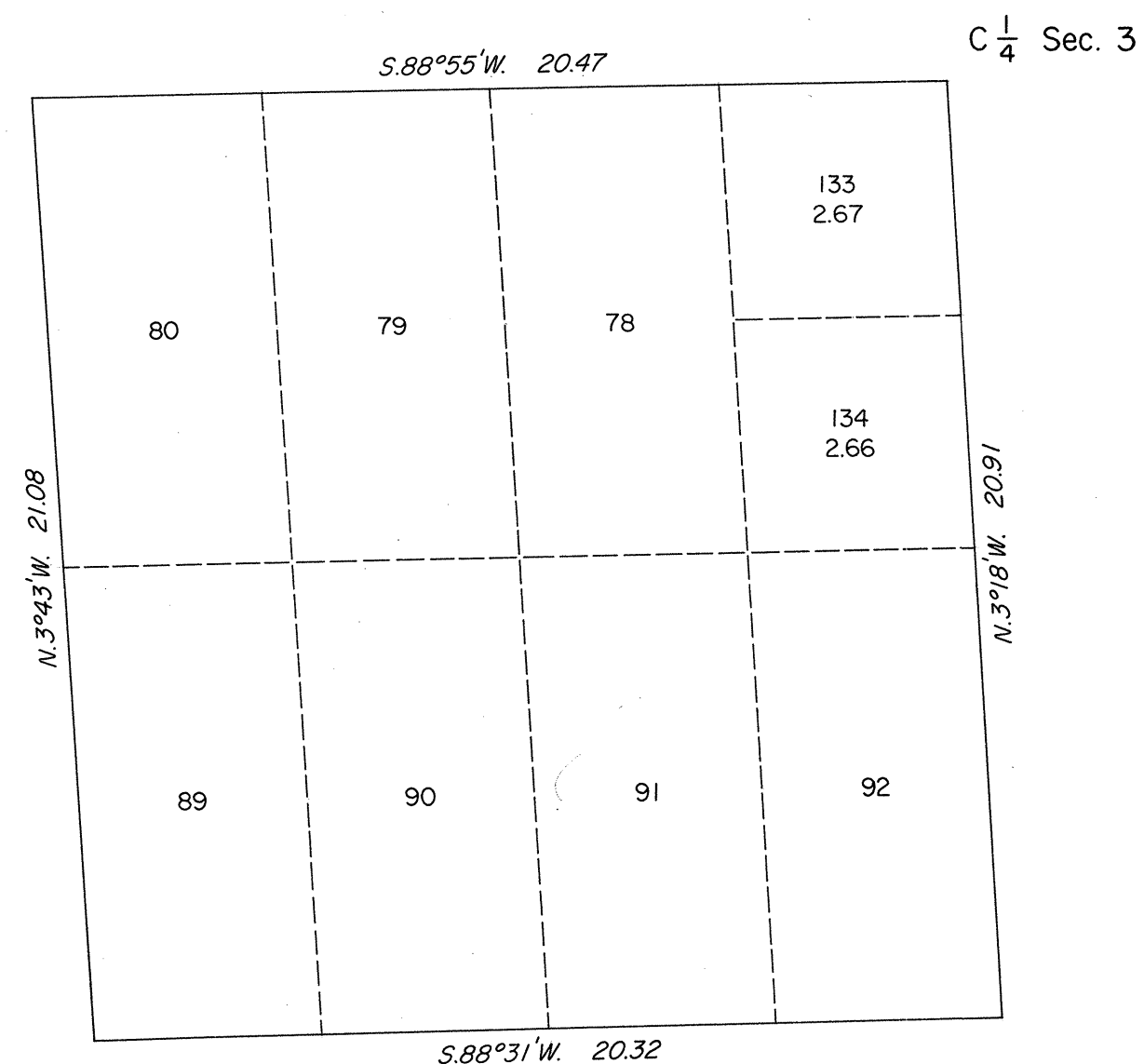
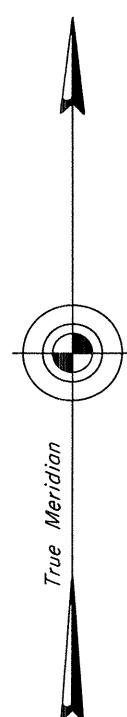


CR 6/1994
✓ dep
ORIGINAL

OFFICIALLY FILED
NEVADA STATE OFFICE
1000 AM DEC 3, 1981

TOWNSHIP 21 SOUTH, RANGE 60 EAST, OF THE MOUNT DIABLO MERIDIAN, NEVADA
SUPPLEMENTAL PLAT OF SECTION 3



This plat showing a subdivision of original lot 77, sec. 3, T. 21 S., R. 60 E., Mount Diablo Meridian, Nevada, is based upon the plat accepted June 8, 1953.

UNITED STATES DEPARTMENT OF THE INTERIOR
BUREAU OF LAND MANAGEMENT

Denver, Colorado November 13, 1981

This plat, showing amended lottings, is based upon the official records and, having been correctly prepared in accordance with the regulations of this Bureau, is hereby accepted.

For the Director

Mary L. Spight

Acting Chief, Cadastral Survey
Examination and Approval Staff

