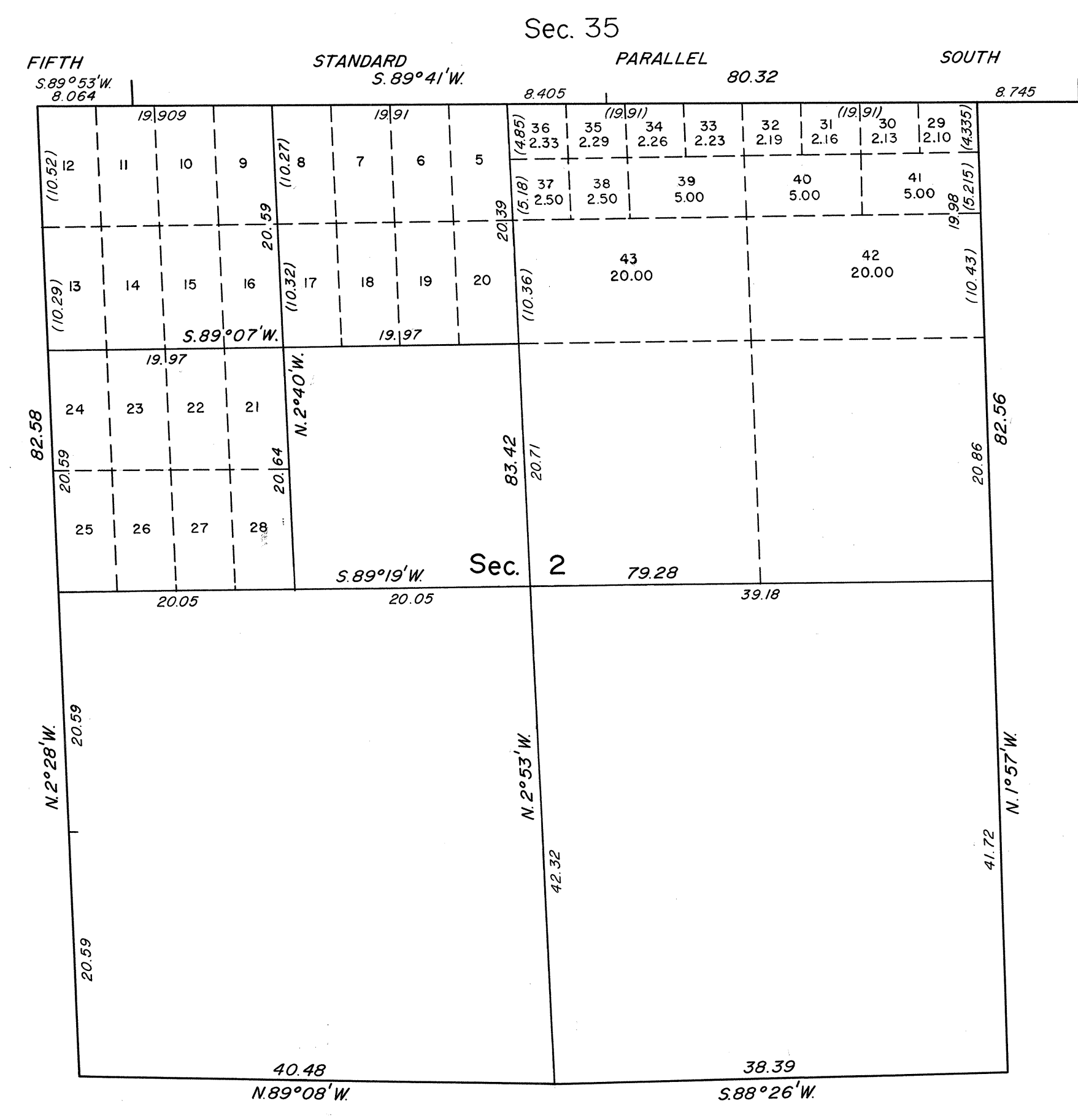
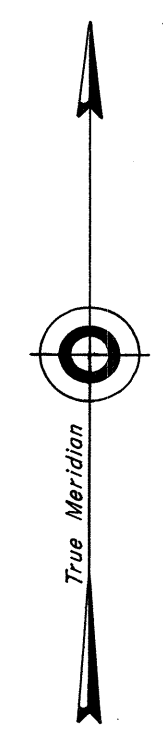


ORIGINAL

TOWNSHIP 21 SOUTH, RANGE 60 EAST, OF THE MOUNT DIABLO MERIDIAN, NEVADA  
SUPPLEMENTAL PLAT OF SECTION 2

OFFICIALLY FILED  
NEVADA LAND OFFICE  
10:00 A.M., DECEMBER 12, 1966



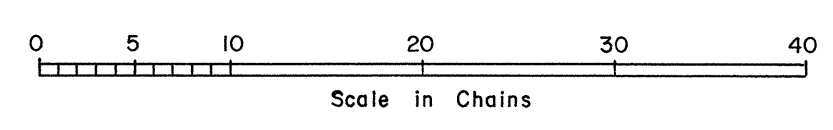
This supplemental plat of section 2, showing amended lottings in original lots 1 and 2, is based on the plat approved September 3, 1881, and the plat accepted June 8, 1953.

UNITED STATES DEPARTMENT OF THE INTERIOR  
BUREAU OF LAND MANAGEMENT  
Washington, D. C. November 9, 1966

This plat, showing amended lottings, is based upon the official records, and having been correctly prepared in accordance with the regulations, is hereby accepted.

For the Director

Chief, Division of Engineering



T. 21S, R. 60E