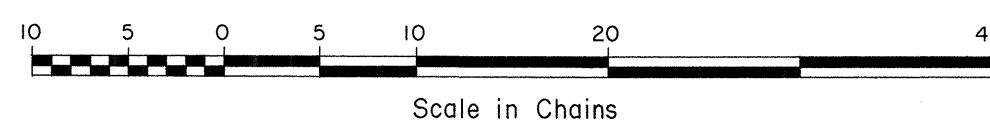
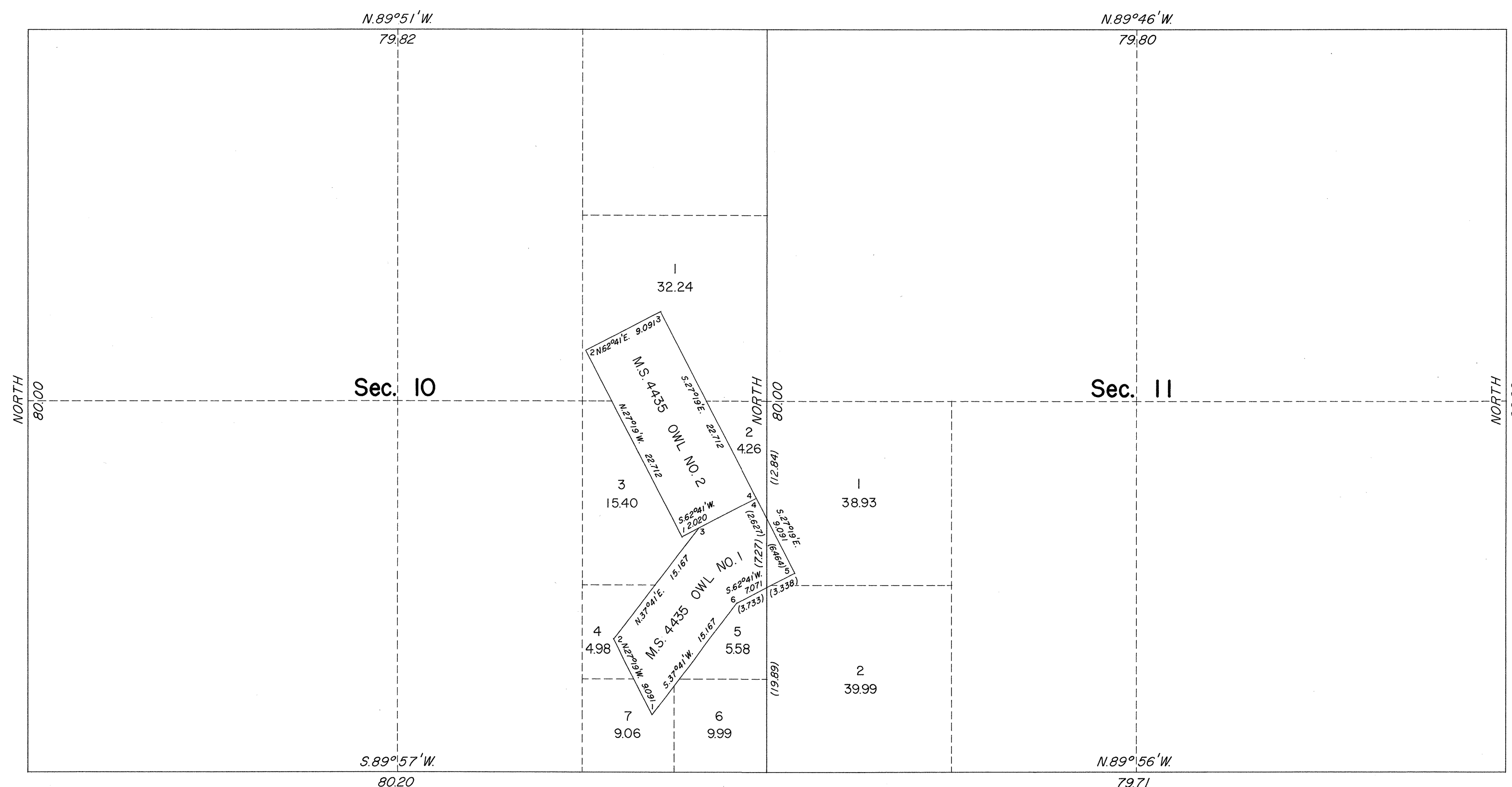
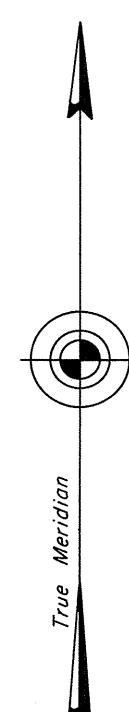


ORIGINAL

OFFICIALLY FILED
NEVADA STATE OFFICE
10:00 A.M. 4/4/1972

TOWNSHIP 21 SOUTH, RANGE 59 EAST, OF THE MOUNT DIABLO MERIDIAN, NEVADA

SUPPLEMENTAL PLAT OF SECTIONS 10 AND 11



This supplemental plat of sections 10 and 11, T. 21 S., R. 59 E., Mount Diablo Meridian, Nevada, showing new lottings created by the segregation of Mineral Survey No. 4435, Owl No. 1 and 2 Lodes, is based upon the plat approved September 3, 1881 and the approved mineral survey records.

UNITED STATES DEPARTMENT OF THE INTERIOR
BUREAU OF LAND MANAGEMENT
Washington, D.C. February 22, 1972

This plat, showing new lottings, is based upon the official records and, having been correctly prepared in accordance with the regulations, is hereby accepted.

For the Director

Clark F. Lumm

Chief, Division of Cadastral Survey