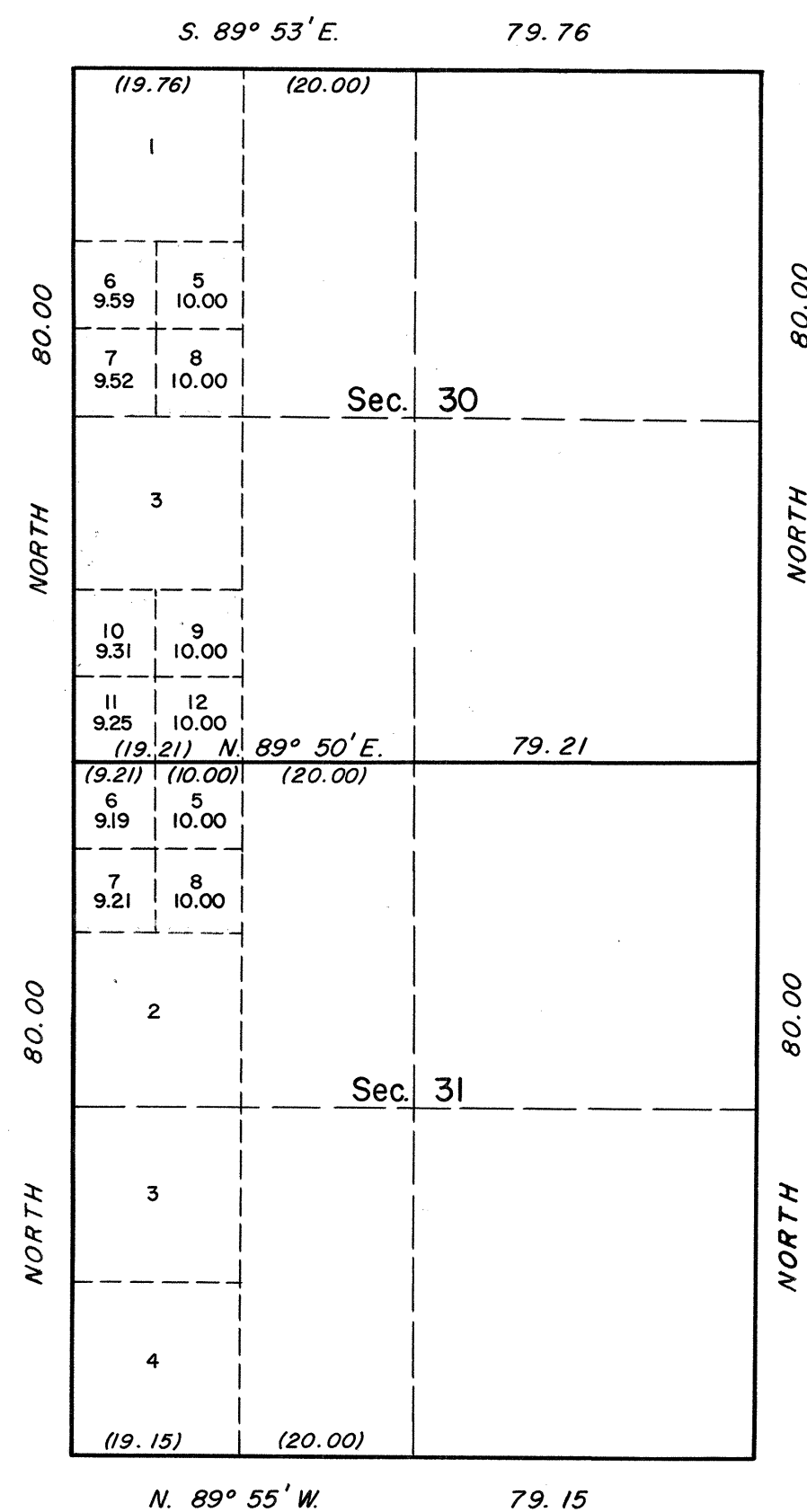
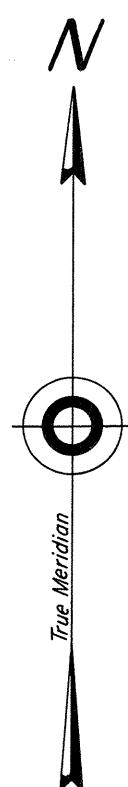


## TOWNSHIP 21 SOUTH, RANGE 59 EAST, OF THE MOUNT DIABLO MERIDIAN, NEVADA

## SUPPLEMENTAL PLAT OF SECTIONS 30 and 31



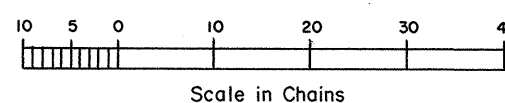
This supplemental plat of sections 30 and 31, Township 21 South, Range 59 East, Mount Diablo Meridian, Nevada, showing amended lottings in original lots 2 and 4, section 30, and original lot 1, section 31, is based on the plat approved September 3, 1881.

UNITED STATES DEPARTMENT OF THE INTERIOR  
BUREAU OF LAND MANAGEMENT  
Washington, D. C. October 14, 1963

This plat, showing amended lottings, is based upon the official records, and having been correctly prepared in accordance with the regulations, is hereby accepted.

For the Director

*E. J. Hemminger*  
Chief, Division of Engineering



2555-C

S 304 31 T 21 S, R 59 E

RTB