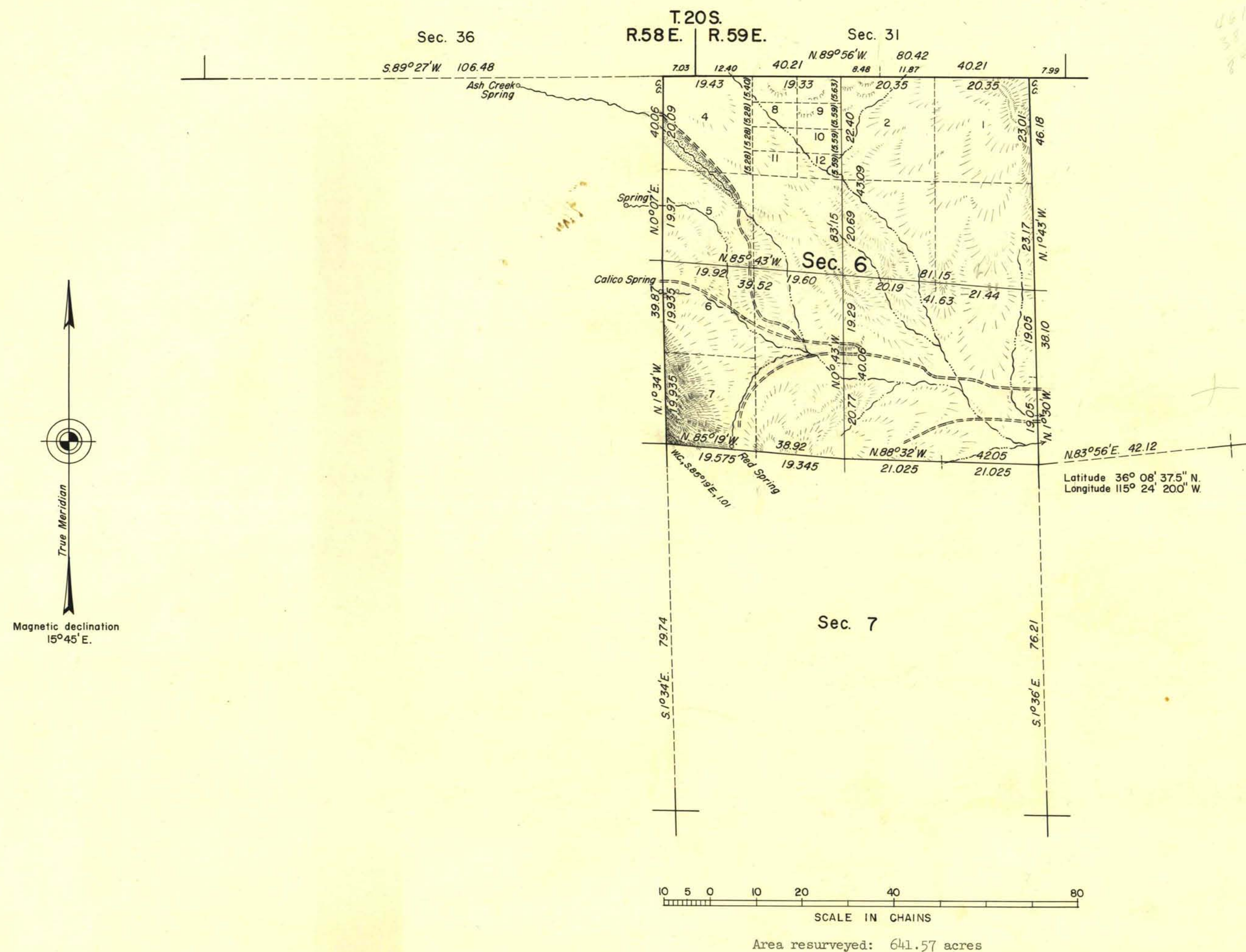


TOWNSHIP 21 SOUTH, RANGE 59 EAST, MOUNT DIABLO MERIDIAN, NEVADA.
SUBDIVISION OF SECTION 6



The Fifth Standard Parallel South along the South boundary of T. 20 S., Rs. 58 and 59 E., the South, East, and West boundaries and the subdivision of T. 21 S., R. 59 E. were surveyed by Brunt and Proctor in 1881.

This plat represents a dependent resurvey of the Fifth Standard Parallel South along a portion of the South boundary of T. 20 S., R. 59 E., a portion of the West boundary and a portion of the subdivisional lines of T. 21 S., R. 59 E. designed to restore the corners in their original locations according to the best available evidence and the survey of a portion of the subdivisional lines of T. 21 S., R. 59 E., Mt. Diablo Meridian, Nevada. Lotings and areas are as shown on plat approved September 3, 1881 and plat accepted March 19, 1956.

Survey executed by Paul K. Russell, April 23 to 30, 1957, under supplemental special instructions dated March 14, 1956 for Group 362, Nevada.

UNITED STATES DEPARTMENT OF THE INTERIOR
BUREAU OF LAND MANAGEMENT
Washington, D. C. May 7, 1959

This plat is strictly conformable to the approved field notes, and the survey, having been correctly executed in accordance with the requirements of law and the regulations of this Bureau, is hereby accepted.

For the Director
Earl G. Harrington
Cadastral Engineering Staff Officer