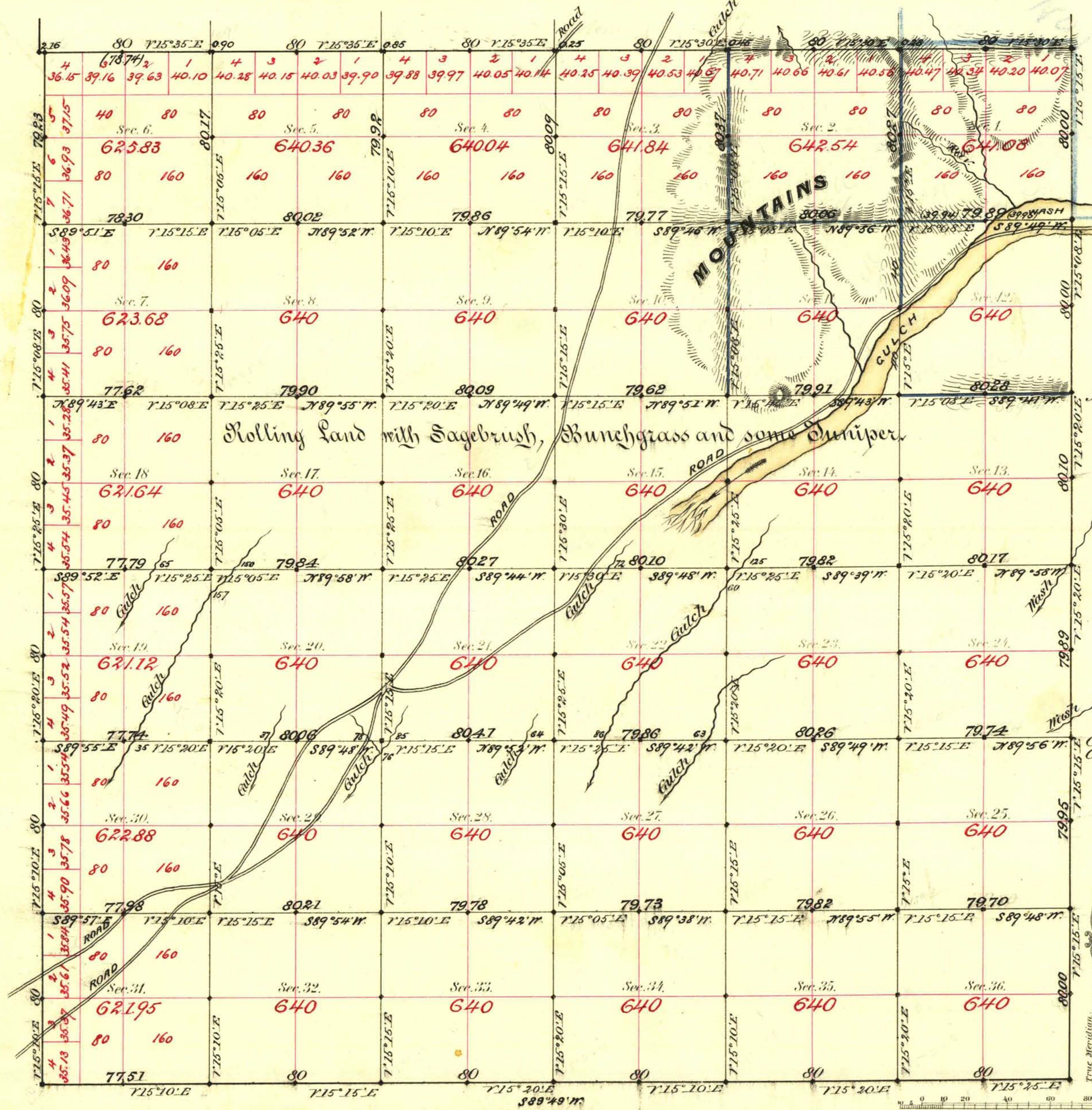


TOWNSHIP N<sup>o</sup> 21 SOUTH RANGE N<sup>o</sup> 55 EAST MOUNT DIABLO MERIDIAN



Aggregate Area of Public Land Surveyed 22,942.96 Acres

Commenced August 9<sup>th</sup> 1881.  
Completed 15<sup>th</sup> -

| Surveys Designated        | By Whom Surveyed | Date of Contract          | Amount of Surveys | When Surveyed |
|---------------------------|------------------|---------------------------|-------------------|---------------|
| N. Bdy.                   | Theo. Binge      | Feb. 7 <sup>th</sup> 1887 | 6-80-80           | 1887          |
| E. (retraced)             | Brunt's Proctor  | .                         | 5-79-94           | .             |
| N.S.                      | .                | April 10 <sup>th</sup>    | 11-76-74          | .             |
| Subdir <sup>o</sup> black | .                | .                         | 53-68-50          | August        |
| blue                      | .                | .                         | 6-00-92           | .             |
| Convergency               | .                | .                         | 2-73              | .             |

77<sup>th</sup> Cont  
114  
115  
127  
"

The above Map of Township N. 21 South of Range N. 55 East of Mt. Diablo Meridian is strictly conformable to the field notes of the survey thereof on file in this office, which have been examined and approved.

Surveyor General's Office,  
Reno, Nevada

*C. S. Paris*  
Sur. Gen. Nevada

July 14<sup>th</sup> 1882