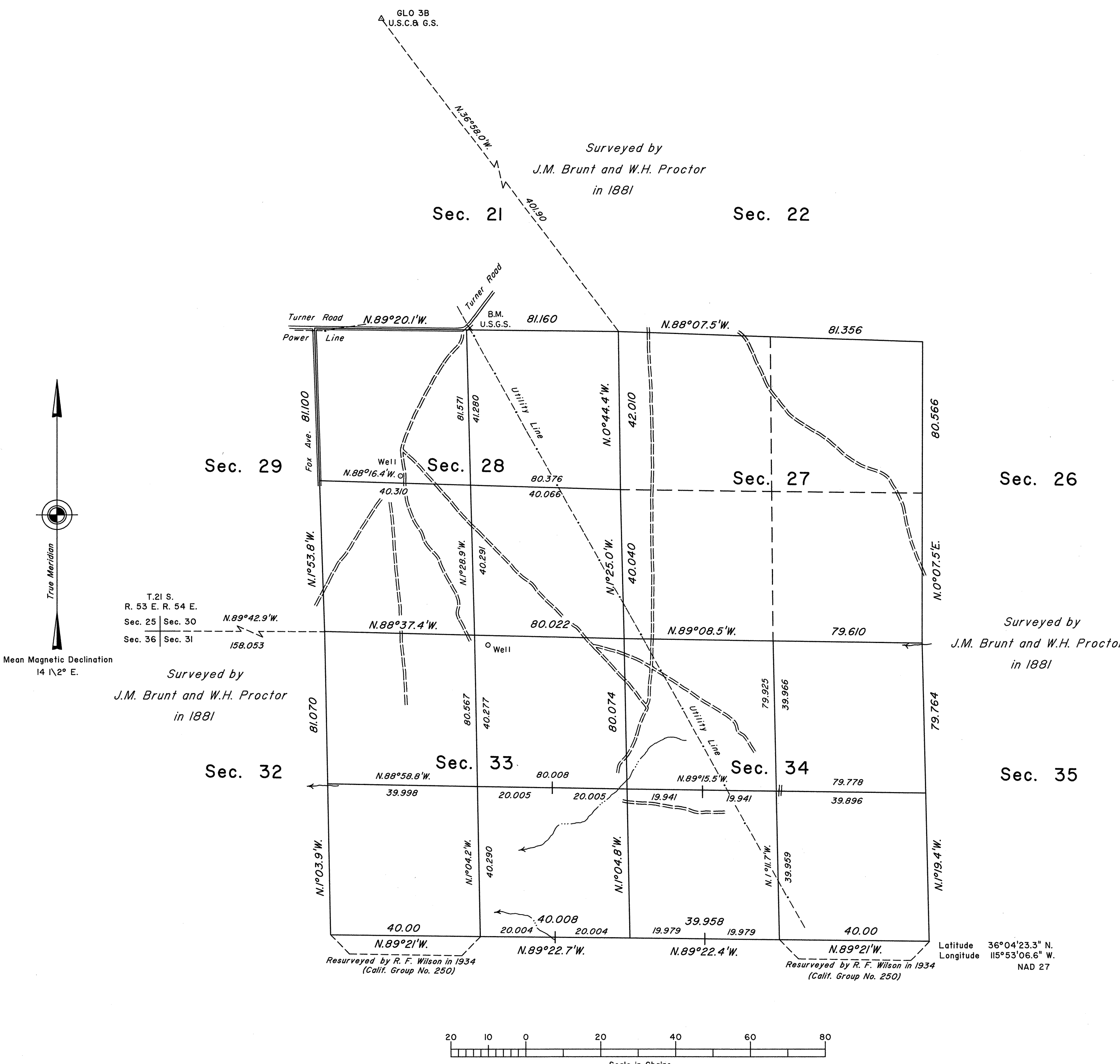


ORIGINAL

TOWNSHIP 21 SOUTH, RANGE 54 EAST, OF THE MOUNT DIABLO MERIDIAN, NEVADA

DEPENDENT RESURVEY AND SUBDIVISIONS



History of the earlier surveys is contained in the field notes.

This plat represents a dependent resurvey of a portion of the south boundary, and a portion of the subdivisional lines, designed to restore the corners in their original locations according to the best available evidence; and the survey of the subdivision of certain sections of T. 21 S., R. 54 E., Mount Diablo Meridian, Nevada.

Lottings and areas are as shown on the plat approved July 14, 1882.

Survey executed by Neil R. Forsyth, Cadastral Surveyor, beginning February 17, 1990 and completed March 14, 1990, under Special Instructions dated February 15, 1990, for Group No. 682, Nevada.

Surveyed by
J.M. Brunt and W.H. Proctor
in 1881

Surveyed by
J.M. Brunt and W.H. Proctor
in 1881

UNITED STATES DEPARTMENT OF THE INTERIOR
BUREAU OF LAND MANAGEMENT

Reno, Nevada October 23, 1990

This plat is strictly conformable to the approved field notes, and the survey, having been correctly executed in accordance with the requirements of law and the regulations of this Bureau, is hereby accepted.

For the Director

John S. Parrish
Chief Cadastral Surveyor

Latitude 36°04'23.3" N.
Longitude 115°53'06.6" W.
NAD 27

