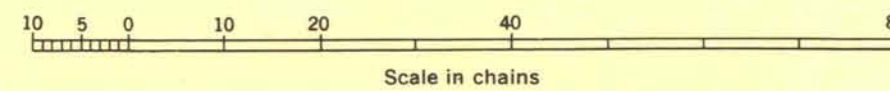
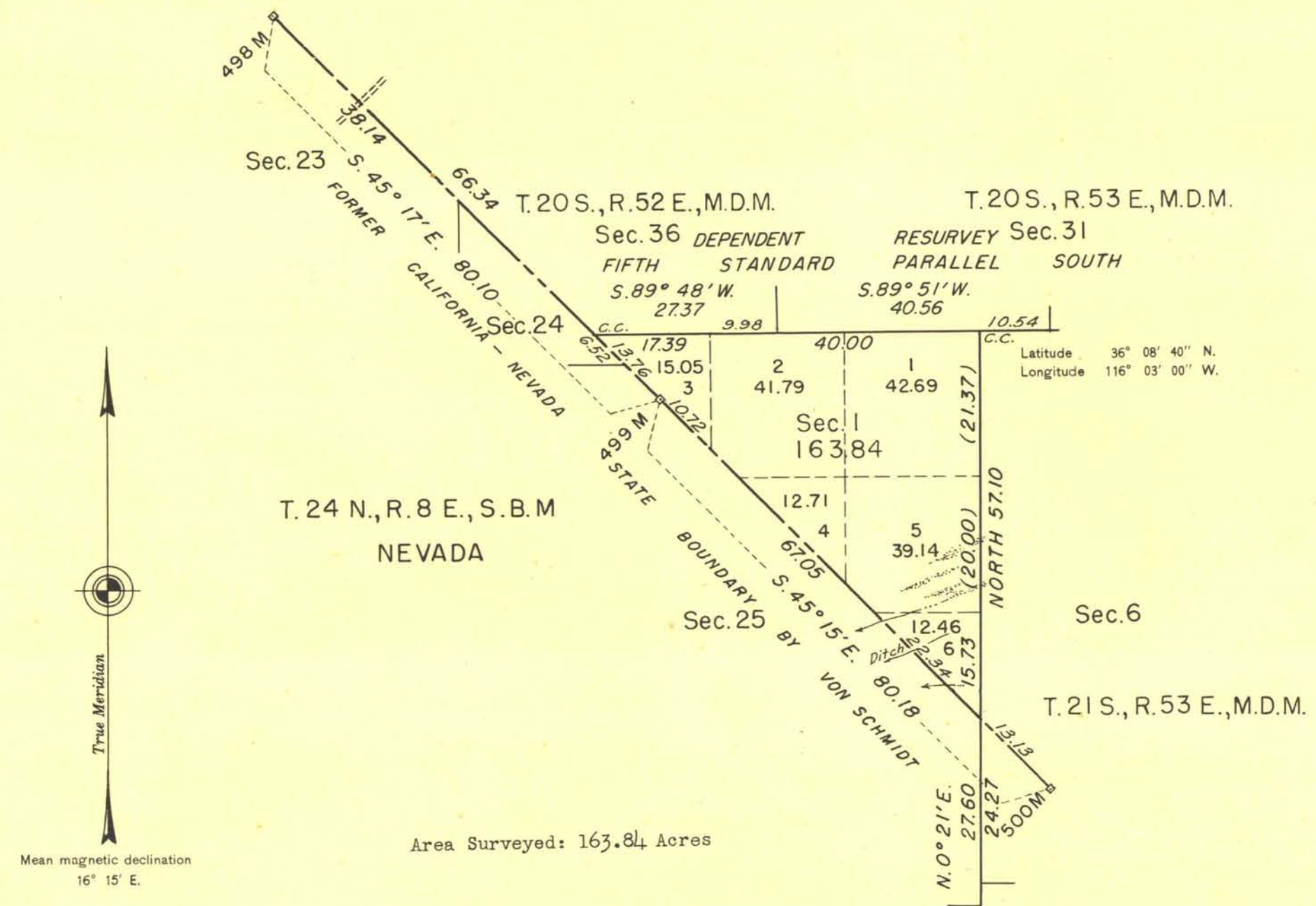


# TOWNSHIP 21 SOUTH, RANGE 52 EAST, OF THE MOUNT DIABLO MERIDIAN, NEVADA



Resurvey of the north boundary (5th Standard Parallel South), and survey of the subdivisional lines executed by G. Marvin Litz, March 18 to 29, 1948, under special instructions dated January 27, 1948, for Group 350.

UNITED STATES DEPARTMENT OF THE INTERIOR  
BUREAU OF LAND MANAGEMENT  
Washington, D. C., September 22, 1949

This plat is strictly conformable to the approved field notes, and the survey, having been correctly executed in accordance with the requirements of law and the regulations of this Bureau, is hereby accepted.

For the Director  
*Earl S. Harrington*  
Chief, Division of Engineering