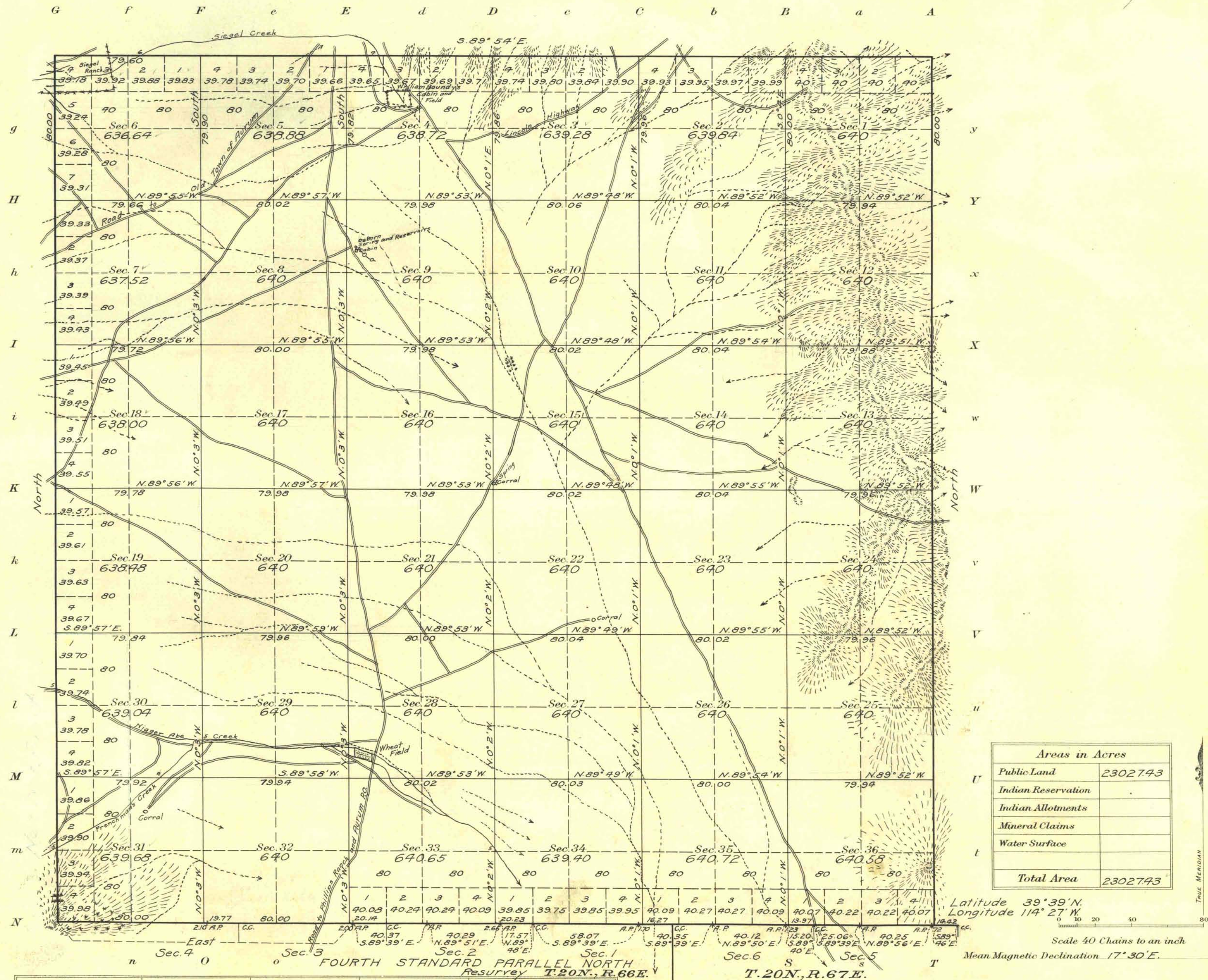


Township N^o 21 North Range N^o 66 East Mt Diablo Meridian, Nevada



| Surveys Designated | By Whom Surveyed | Group | Amount of Surveys | | When Surveyed | | |
|-----------------------------|------------------|-------|-------------------|-----------|---------------|--------------|--------------|
| | | | Mls. | chs. fks. | Begun | Completed | |
| Fourth St. Par. North (res) | Newton E. Potter | 20 | Jan. 25, 1913 | 6 | 00 00 | May 13, 1913 | May 14, 1913 |
| E. Boundary | " | " | " | 6 | 00 00 | " 14, " | " 15, " |
| N. " | " | " | " | 5 | 79 60 | " 16, " | " 17, " |
| W. " | " | " | " | 6 | 00 00 | " 8, " | " 9, " |
| Subdivisions | " | " | " | 59 | 78 31 | " 19, " | " 24, " |

The above map of Township No. 21 North Range No. 66 East of the Mt Diablo Meridian Nevada is strictly conformable to the field notes of the survey thereof on file in this office, which have been examined and approved

U. S. Surveyor General's Office.
Reno Nevada December 30, 1914
John B. Sullivan
Surveyor General.

H.S.P.

3032

T 21 N, R. 66 E