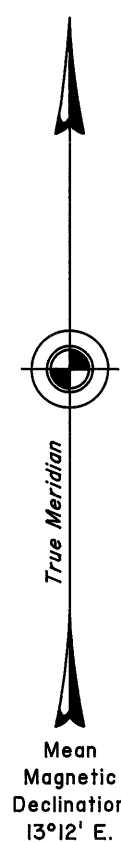


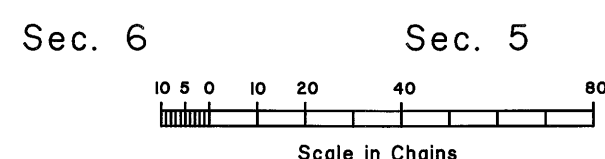
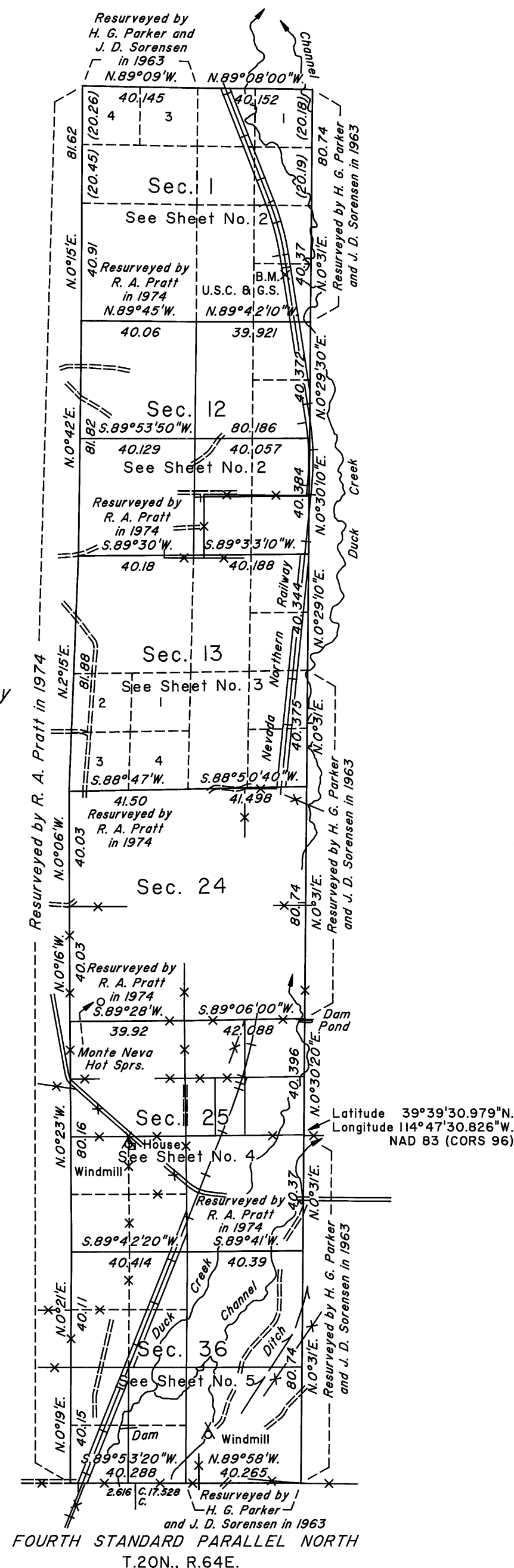
TOWNSHIP 21 NORTH, RANGE 63 EAST, OF THE MOUNT DIABLO MERIDIAN, NEVADA
DEPENDENT RESURVEY, SUBDIVISION AND METES-AND-BOUNDS SURVEY

OFFICIALLY FILED
NEVADA STATE OFFICE
at 10:00 AM on April 15, 2010



Unsurveyed

Resurveyed by
R. A. Pratt
in 1974



A history of surveys is contained in the field notes.

A dependent resurvey of the Fourth Standard Parallel North through a portion of Range 63 East, was executed concurrently under this same group.

This plat, in five sheets, represents the dependent resurvey of portions of the east and north boundaries and a portion of the subdivisional lines designed to restore the corners in their true original locations according to the best available evidence, the subdivision of sections 12, 25 and 36, and metes-and-bounds surveys of portions of the easterly and westerly right-of-way lines of the Nevada Northern Railway, Township 21 North, Range 63 East, Mount Diablo Meridian, Nevada.

Except as indicated hereon, the lottings and areas are as shown on the plat approved February 7, 1876 and the plat accepted March 30, 1977.

Survey executed by Kane M. Hellebust, Cadastral Surveyor, and Clay W. Morrow, Surveying Technician, beginning June 17, 2008, and completed December 4, 2009, pursuant to Special Instructions dated August 8, 2007, for Group No. 857, Nevada.

Latitude 39°39'30.979"N.
Longitude 114°47'30.826"W.
NAD 83 (CORS 96)

UNITED STATES DEPARTMENT OF THE INTERIOR
BUREAU OF LAND MANAGEMENT

Reno, Nevada April 13, 2010

This plat is strictly conformable to the approved field notes, and the survey, having been correctly executed in accordance with the requirements of law and the regulations of this Bureau, is hereby accepted.

For the Director

Chief Cadastral Surveyor, Nevada