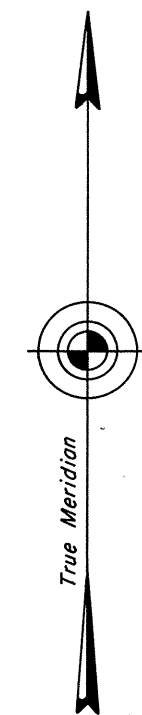


CP
5/17/84
✓

ORIGINAL

OFFICIALLY FILED
NEVADA STATE OFFICE
10:00 A.M. MAY 17, 1984

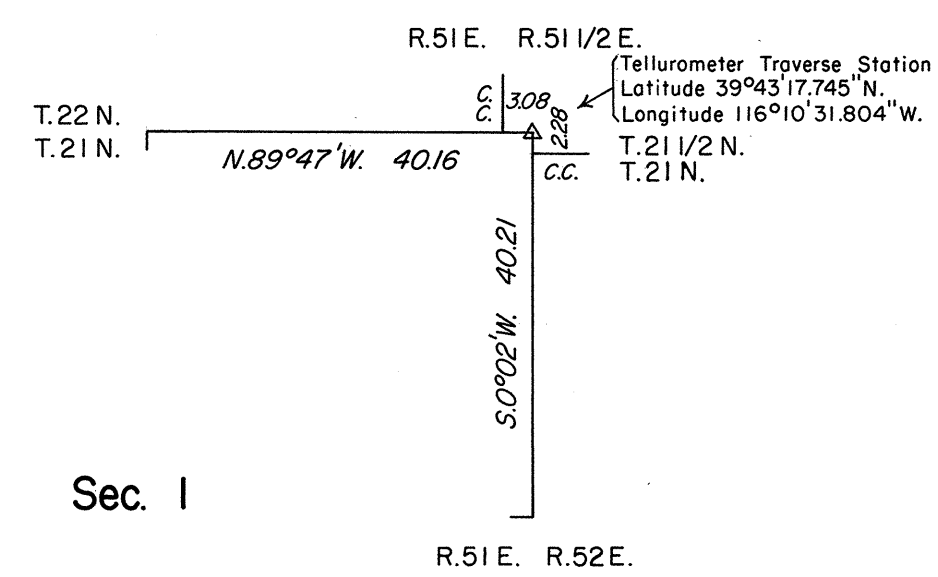
TOWNSHIP 21 NORTH, RANGE 51 EAST, OF THE MOUNT DIABLO MERIDIAN, NEVADA
DEPENDENT RESURVEY



Mean Magnetic Declination
17°E.

Sec. 36

Sec. 1



History of the earlier surveys is contained in the field notes.

This plat represents a dependent resurvey of a portion of the north and east boundaries of T. 21 N., R. 51 E., designed to restore the corners in their true original locations according to the best available evidence.

Survey executed by John A. Farmer, Cadastral Surveyor, beginning July 25, 1983 and completed July 25, 1983, under Special Instructions dated June 6, 1983, for Group 608, Nevada.

UNITED STATES DEPARTMENT OF THE INTERIOR
BUREAU OF LAND MANAGEMENT

Reno, Nevada

April 25, 1984

This plat, is strictly conformable to the approved field notes, and the survey, having been correctly executed in accordance with the requirements of law and in the regulations of this Bureau, is hereby accepted.

For the Director

Lacel E. Bland

Chief Cadastral Surveyor

