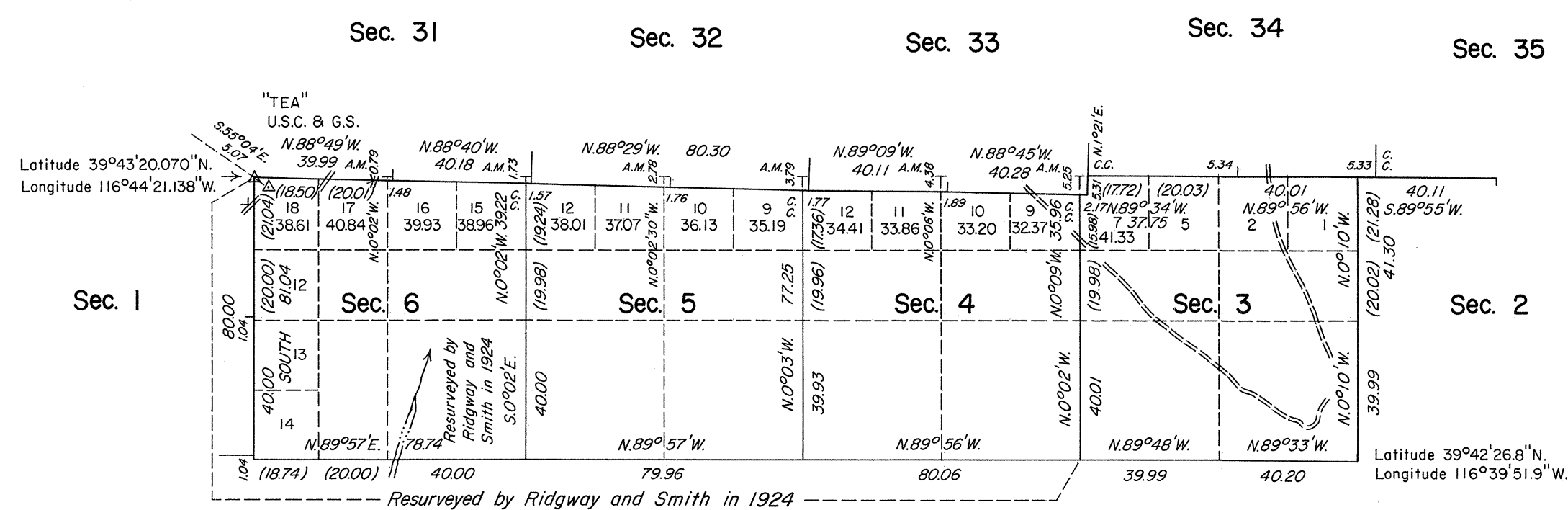


TOWNSHIP 21 NORTH, RANGE 47 EAST, OF THE MOUNT DIABLO MERIDIAN, NEVADA  
DEPENDENT RESURVEY

History of the earlier surveys is contained in the field notes.

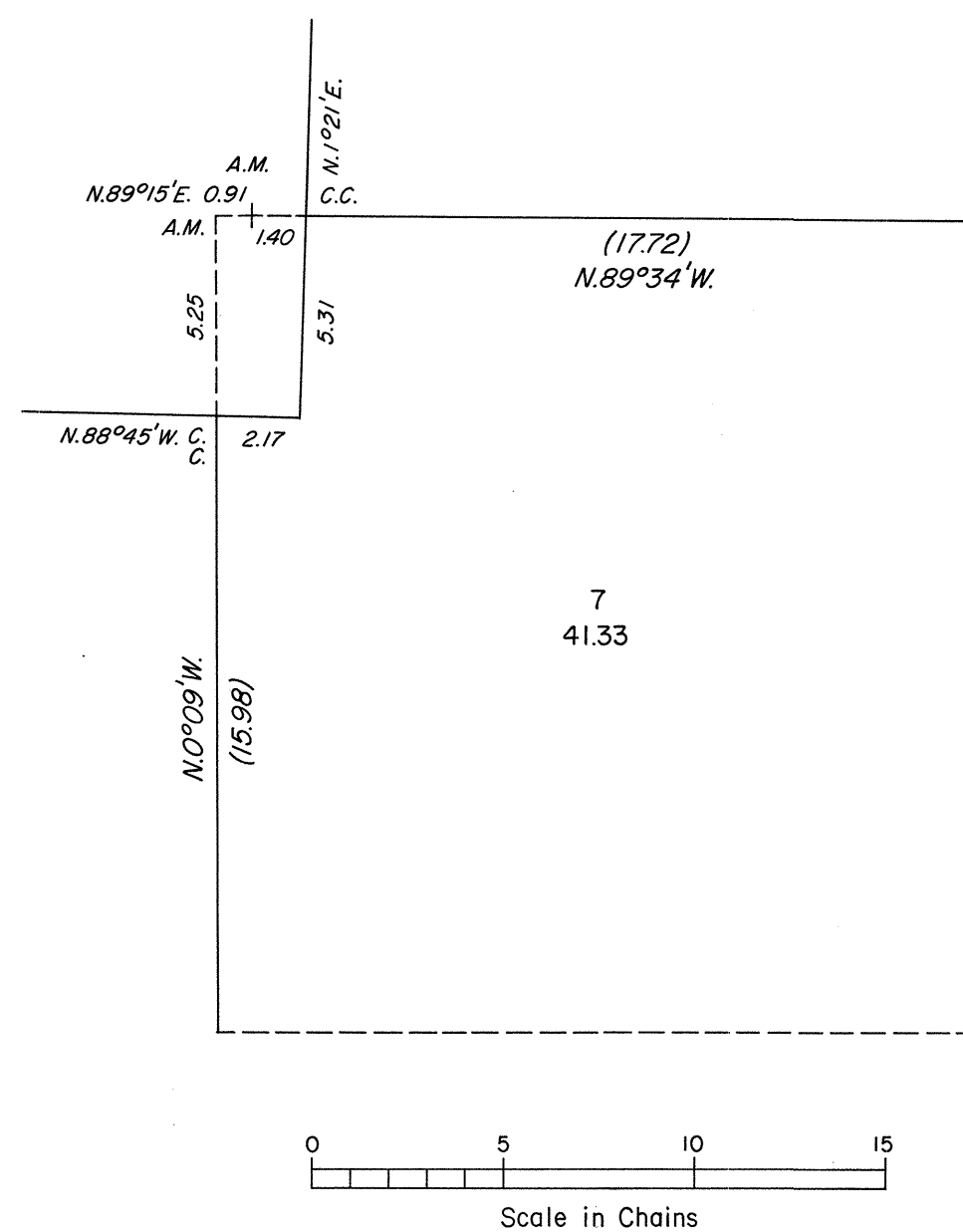
A dependent resurvey of a portion of the south boundary of T. 22 N., R. 47 E., was executed concurrently under this same Group.

This plat represents a dependent resurvey of a portion of the north boundary and a portion of the subdivisional lines of T. 21 N., R. 47 E., designed to restore the corners in their true original locations according to the best available evidence.

Except as indicated hereon, the lottings and areas are as shown on the plat approved December 16, 1925, and accepted May 19, 1926.

Survey executed by John A. Farmer, Cadastral Surveyor, beginning May 19, 1982 and completed December 14, 1982, under Special Instructions dated March 29, 1982 and Supplemental Special Instructions dated June 30, 1982, for Group 589, Nevada.

## ENLARGED DIAGRAM OF LOT 7, SECTION 3



UNITED STATES DEPARTMENT OF THE INTERIOR  
BUREAU OF LAND MANAGEMENT

Reno, Nevada

March 8, 1984

This plat, is strictly conformable to the approved field notes, and the survey, having been correctly executed in accordance with the requirements of law and in the regulations of this Bureau, is hereby accepted.

For the Director

*Lacel E. Bland*

Chief Cadastral Surveyor