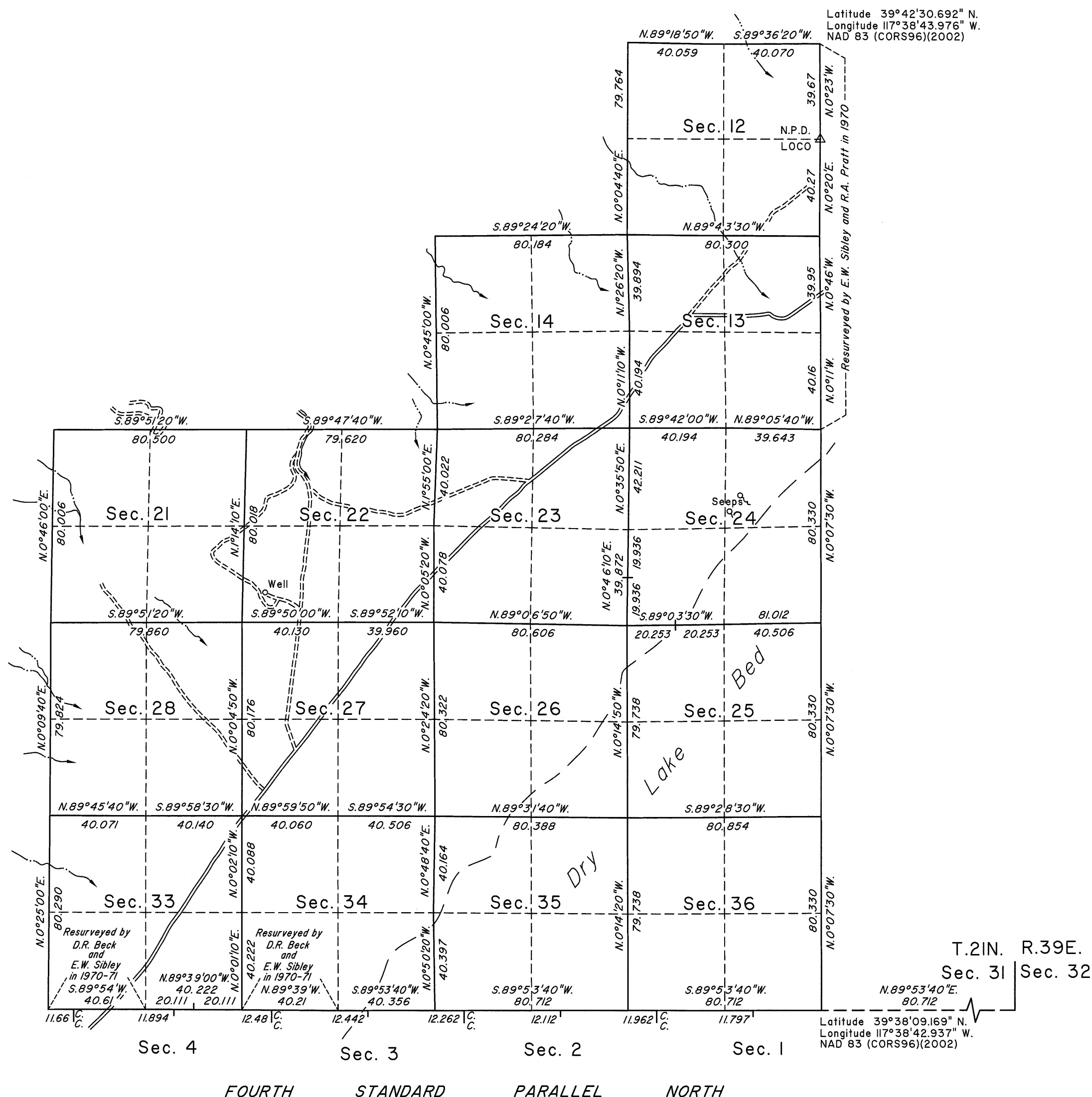
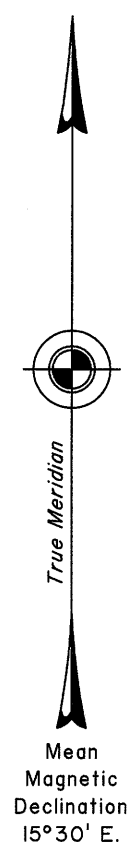


# TOWNSHIP 21 NORTH, RANGE 38 EAST, OF THE MOUNT DIABLO MERIDIAN, NEVADA

## DEPENDENT RESURVEY



Latitude 39°42'30.692" N.  
Longitude 117°38'43.976" W.  
NAD 83 (CORSS96)(2002)

A history of surveys is contained in the field notes.

This plat represents the dependent resurvey of the Fourth Standard Parallel North, through a portion of Range 38 East, a portion of the east boundary and a portion of the subdivisional lines, designed to restore the corners in their true original locations according to the best available evidence, Township 21 North, Range 38 East, Mount Diablo Meridian, Nevada.

Lottings and areas are as shown on the plat approved November 28, 1879.

Survey executed by Don R. Aschenbach, Cadastral Surveyor, beginning August 2, 2011 and completed September 20, 2011, pursuant to Special Instructions dated May 23, 2011, for Group No. 904, Nevada.

UNITED STATES DEPARTMENT OF THE INTERIOR  
BUREAU OF LAND MANAGEMENT

Reno, Nevada May 10, 2012

This plat is strictly conformable to the approved field notes, and the survey, having been correctly executed in accordance with the requirements of law and the regulations of this Bureau, is hereby accepted.

For the Director

Chief Cadastral Surveyor for Nevada

TOTAL AREA OF FEDERAL INTEREST LAND RESURVEYED = 9200.00 ACRES

