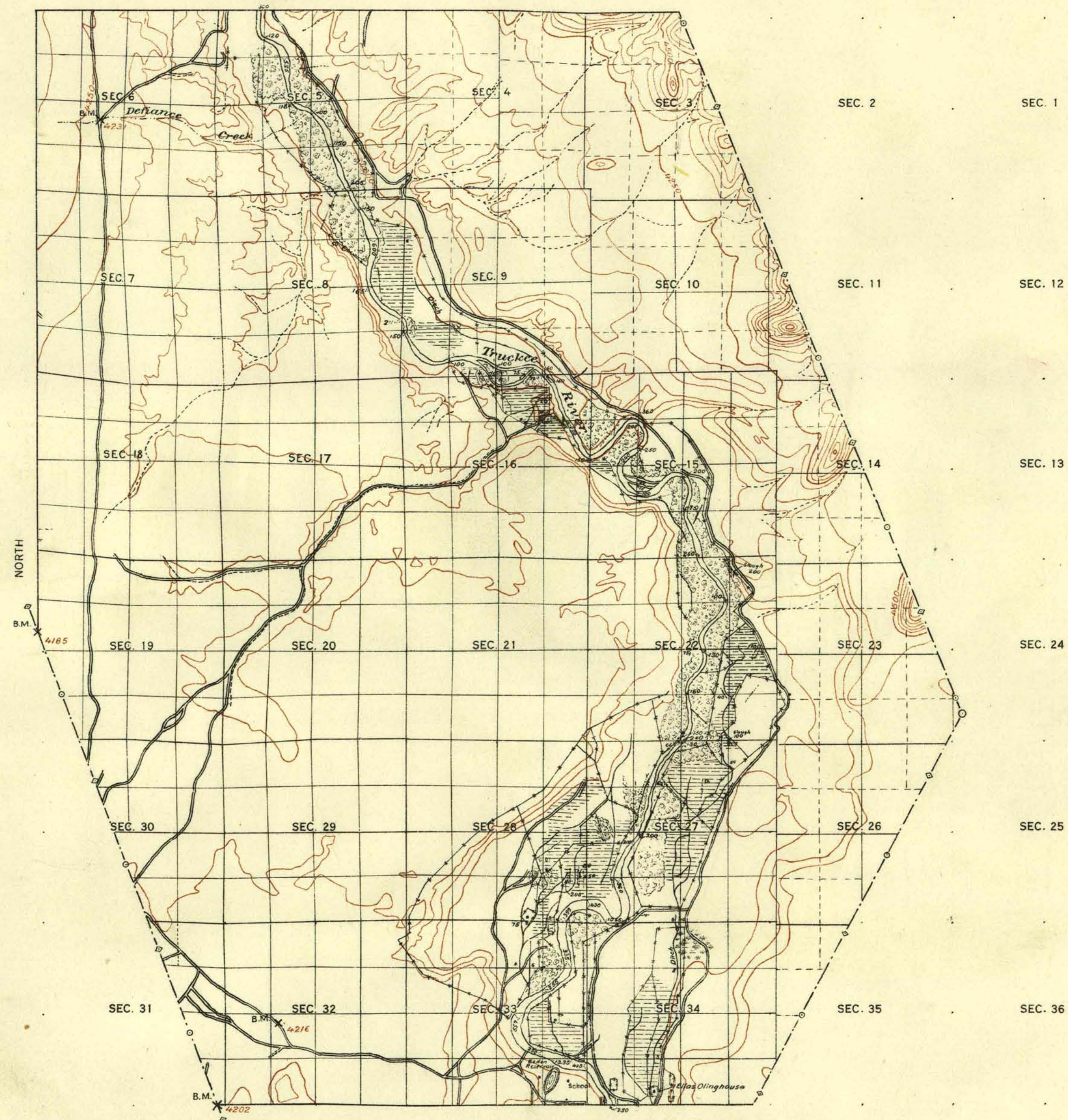


RESURVEY OF TOWNSHIP NO. 21 NORTH, RANGE NO. 24 EAST OF MOUNT DIABLO MERIDIAN, NEVADA.  
PYRAMID LAKE INDIAN RESERVATION



Contour interval 50 feet  
Note: Curved lines or contours, are lines of equal elevation, and represent approximately the form of the earth's surface and the altitude above sea level.

Scale 40 Chains to an Inch

SURVEYS DESIGNATED	BY WHOM SURVEYED	AMOUNT OF SURVEYS M CHS. LKS.	WHEN SURVEYED
STANDARD LINES	G. P. HARRINGTON	=====	MAY 22, 1911.
TOWNSHIP "	"	=====	MAY 25, 1911.
SUBDIVISION "	"	=====	MAY 27 - AUG. 10, 1911.
MEANDER "			
BOUNDARY "			
CONNECTIONS			

A. F. DUNNINGTON, Topographer in charge. Instructions April 27, 1911.

PLAT "B"

See Plat "A" for lot numbers, areas, length  
and bearing of lines.

THE ABOVE MAP OF TOWNSHIP NO. 21 NORTH, RANGE NO. 24 EAST OF MOUNT DIABLO MERIDIAN, NEVADA, IS STRICTLY CONFORMABLE TO THE FIELD NOTES OF THE SURVEY THEREOF ON FILE IN THIS OFFICE, WHICH HAVE BEEN EXAMINED AND APPROVED.

U. S. GENERAL LAND OFFICE

WASHINGTON, D. C.  
MAY, 15, 1913.

*Frederick Bennett*  
Commissioner.

0437

T21N. R. 24E.

VD