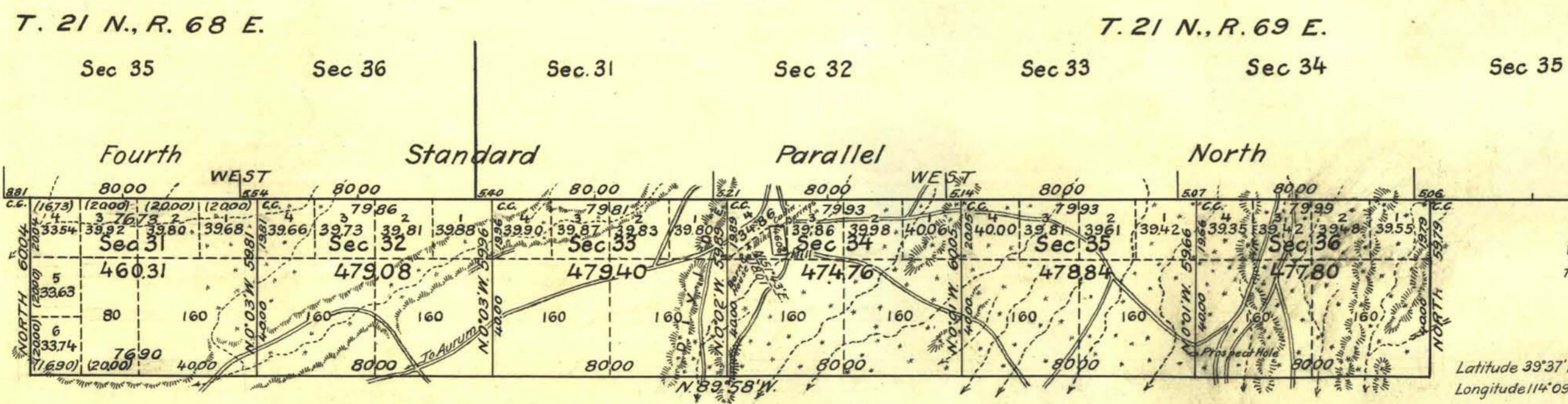


TOWNSHIP N° 20½ NORTH RANGE N° 69 EAST MOUNT DIABLO MERIDIAN NEVADA



LIST OF MINERAL CLAIMS
Survey No. 4606 INDEPENDENCE MILL SITE

- NOTE -
Surveyor reports a low grade of Manganese ore was found scattered over the eastern portion of the township.

Latitude 39° 37' N.
Longitude 114° 09' W.

Mean Magnetic Declination, Scale: 40 Chains to an Inch. Area Surveyed, 2850.19 Acres.

LINES DESIGNATED	BY WHOM SURVEYED	GROUP NO	DATE	MILEAGE	CHS	WHEN SURVEYED	COMPLETED
Exterior	Eddie S. C. Smith	120	Sept. 9, 1925	7	3673	Oct. 28, 1926	Nov. 4, 1926
Subdivisional	" " "	"	" " "	3	5937	Nov. 16, 1926	Nov. 26, 1926
Exterior (Res.)	N. E. Potter	20	Jan. 25, 1913	6	5.06	Aug. 12, 1913	Aug. 21, 1913
Exterior (Orig.)	C. C. Tracy			6	0.00	June 27, 1868	June 28, 1868

Office of U.S. Supervisor of Surveys
Denver, Colorado, June 27, 1928.
The above plot of Township No. 20½ North Range No. 69 East of the Mount Diablo Meridian, Nevada is strictly conformable to the field notes of the survey thereof which have been examined and approved.

Wm. H. Orman
U.S. Supervisor of Surveys.

DEPARTMENT OF THE INTERIOR
GENERAL LAND OFFICE
Washington, D.C., December 5, 1928.
The survey represented by this plat having been correctly executed in accordance with the requirements of law and the regulations of this office, is hereby accepted.

Wm. C. Havell
Assistant Commissioner.

Wm. C. Havell
T. 20½ N., R. 69 E.