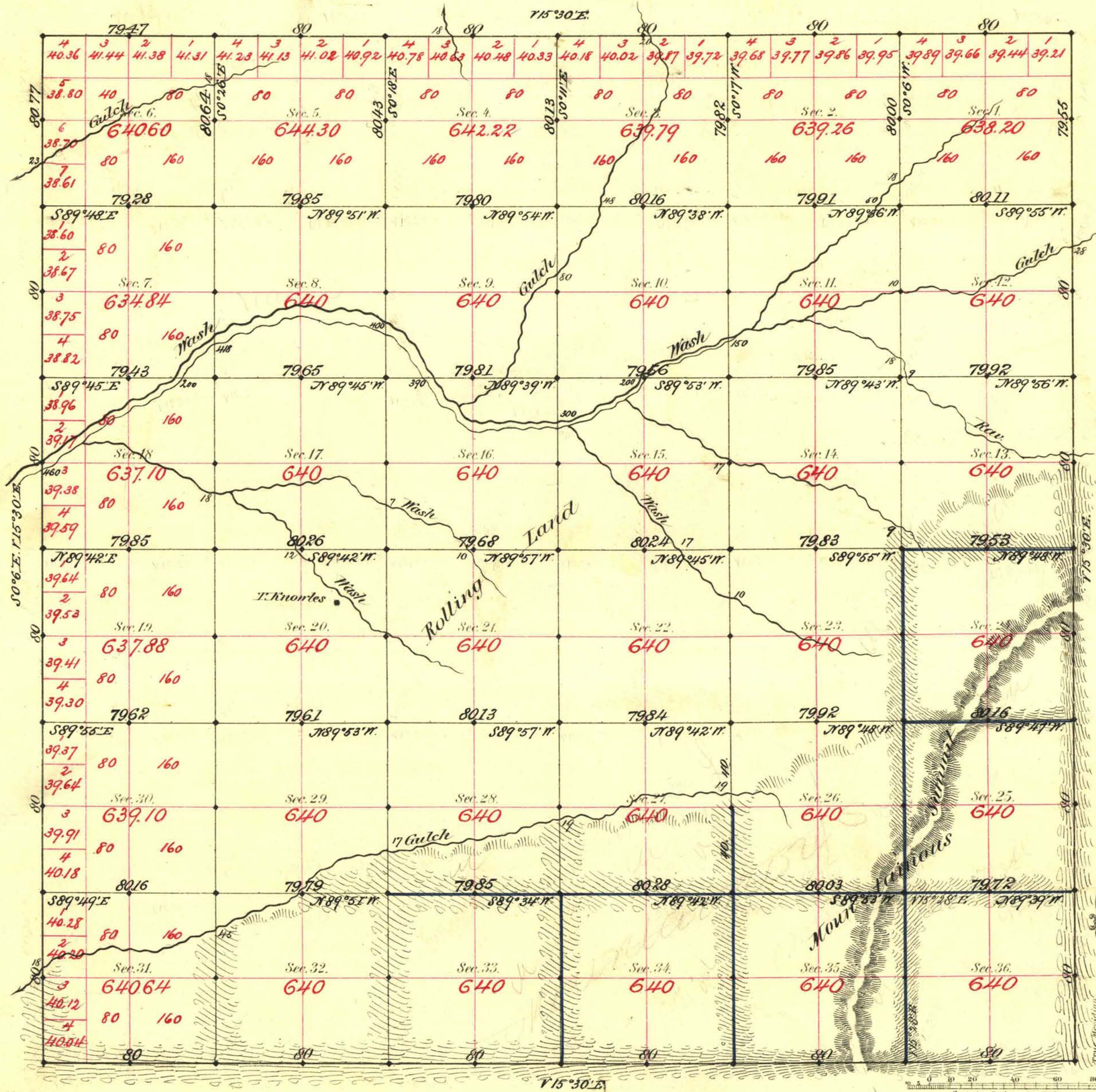


TOWNSHIP N^o 20 SOUTH RANGE N^o 69 EAST MOUNT DIABLO MERIDIAN



Aggregate Area of Public Land Surveyed 23033.93 Acres

Commenced Aug. 3rd 1882.
Completed . . . 10th . . .

Subdivisions not noted run with a Variation of 15° 30' East.

Survey Designated	By Whom Surveyed	Date of Contract	Amount of Survey	When Surveyed
North Pdy	Woods & Myrick	Jan. 20, 1881	25- 00- 47	1881
S.E. 1/4	W. H. Myrick	May 29, 1882	18- 00- 32	1882
Section lines black			48- 37- 28	Aug. "
blue			11- 39- 57	"

7th Cox
109
139

The above Map of Township N^o 20 South of Range N^o 69 East of Mount Diablo Meridian is strictly conformable to the field notes of the survey thereof on file in this Office, which have been examined and approved.
Surveyor General's Office,
New Nevada
Sept. 18th 1882
C. S. Parry
Sur. Gen. Nevada

2