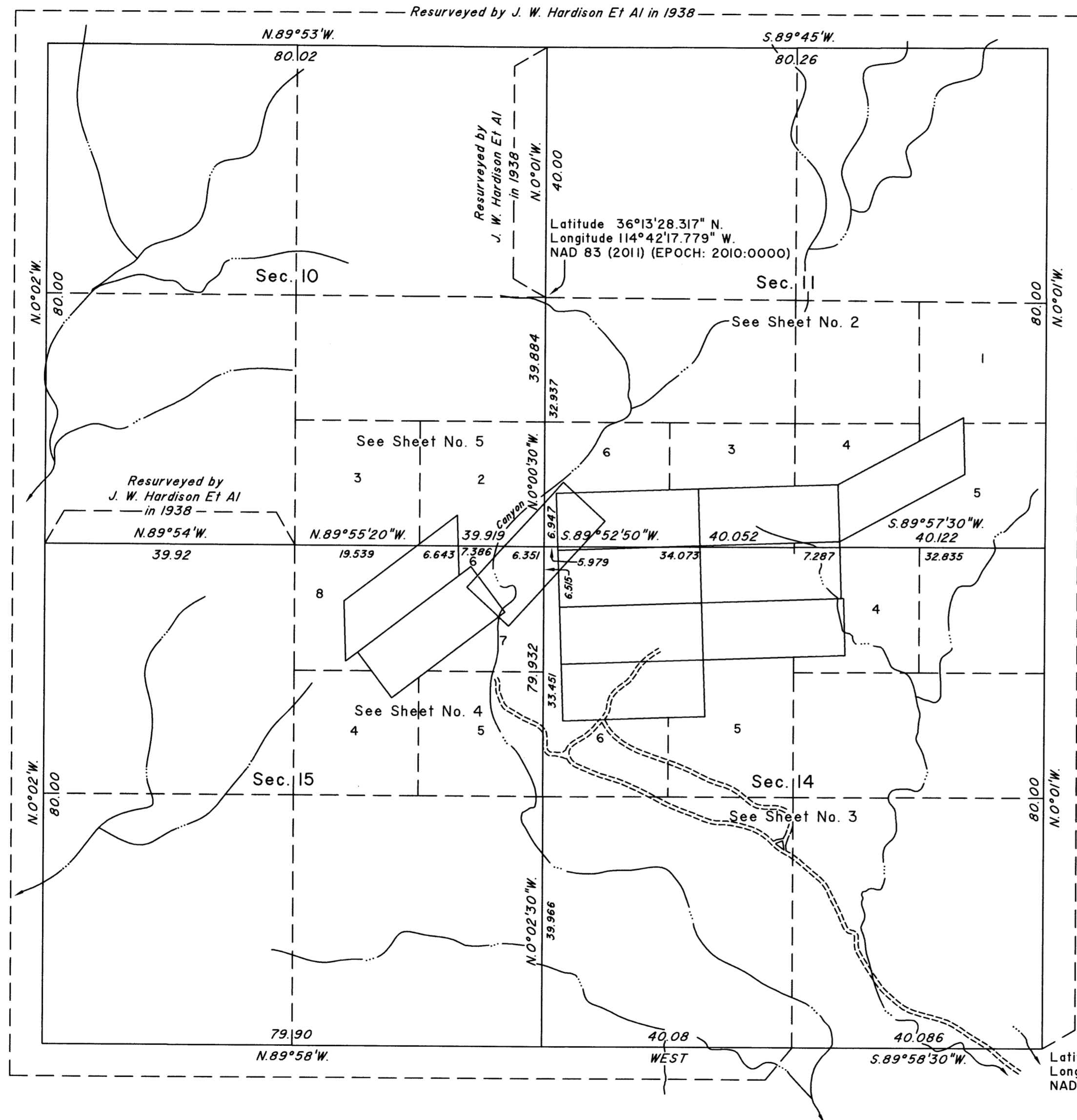


TOWNSHIP 20 SOUTH, RANGE 65 EAST, OF THE MOUNT DIABLO MERIDIAN, NEVADA
DEPENDENT RESURVEY

OFFICIALLY FILED
NEVADA STATE OFFICE
at 10:00 AM on JUN 30 2020



A history of surveys is contained in the field notes.

This plat, in five sheets, represents the dependent resurvey of a portion of the subdivisional lines and portions of certain mineral surveys designed to restore the corners in their true original locations according to the best available evidence, Township 20 South, Range 65 East, Mount Diablo Meridian, Nevada.

Unless otherwise indicated in the field notes, all courses and distances shown on the plat along the perimeter of the mineral segregation areas were taken or computed from the appropriate mineral survey record.

Except as indicated hereon, the lottings and areas are as shown on the plat approved July 26, 1939 and accepted March 4, 1940.

Survey executed by Joseph J. Johnson and Lee T. Wilson, Cadastral Surveyors, beginning July 31, 2015 and completed January 10, 2017, pursuant to Special Instructions dated August 10, 2015, for Group No. 952, Nevada.

For enlargements of sections 10, 11, 14, and 15, see Sheet Nos. 2 through 5 as referenced hereon.

UNITED STATES DEPARTMENT OF THE INTERIOR
BUREAU OF LAND MANAGEMENT

Reno, Nevada May 8, 2020

This plat is strictly conformable to the approved field notes, and the survey, having been correctly executed in accordance with the requirements of law and the regulations of this Bureau, is hereby accepted.

For the Director

Chief Cadastral Surveyor for Nevada