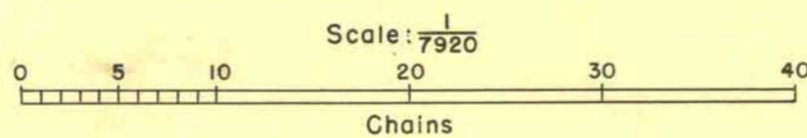
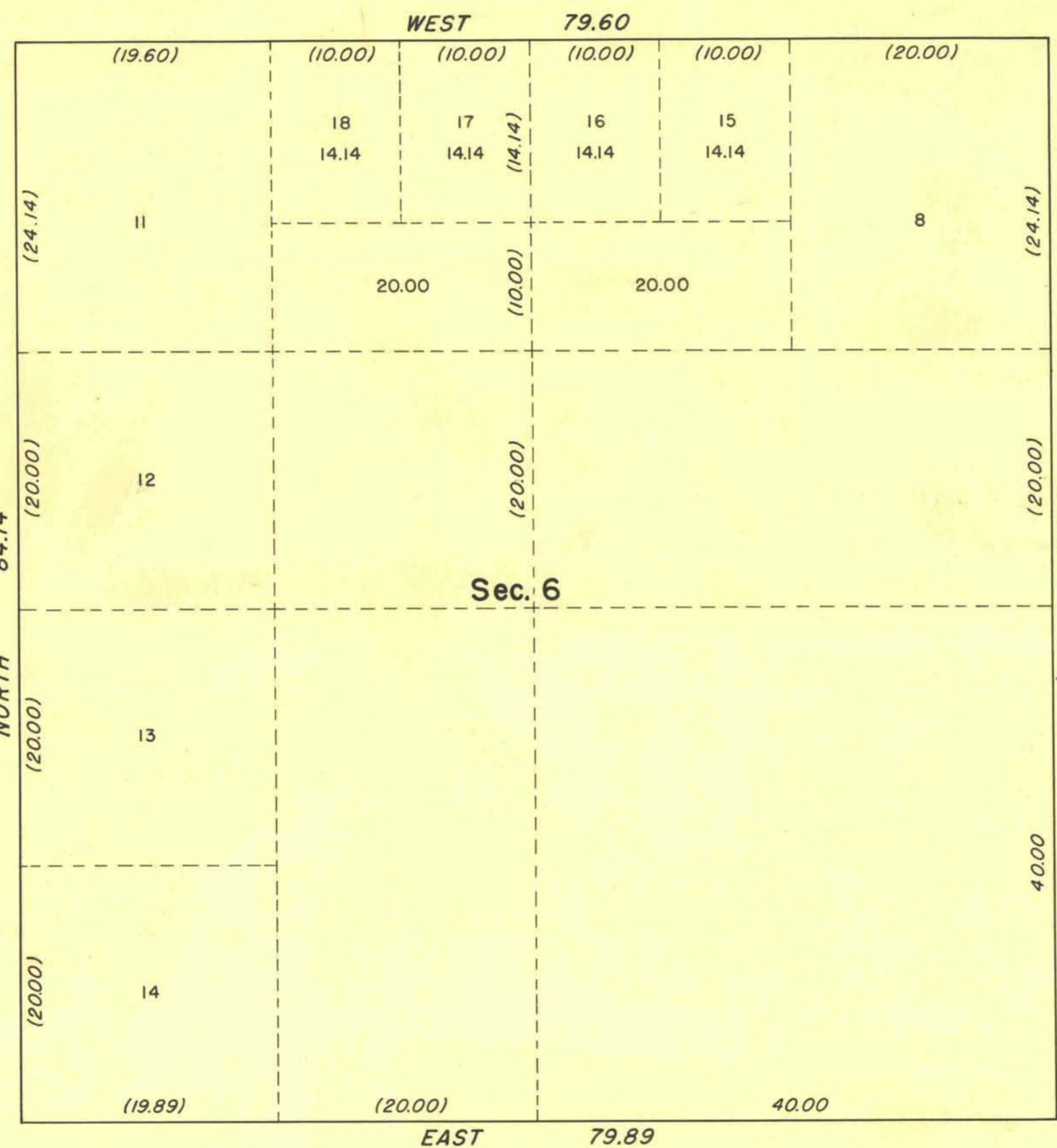


TOWNSHIP 20 SOUTH, RANGE 64 EAST, OF THE MOUNT DIABLO MERIDIAN, NEVADA.  
SUPPLEMENTAL PLAT



MEMORANDUM

THIS PLAT, SHOWING A SUBDIVISION OF ORIGINAL LOTS 9 AND 10, SECTION 6, TOWNSHIP 20 SOUTH, RANGE 64 EAST, OF THE MOUNT DIABLO MERIDIAN, NEVADA, BASED UPON THE PLAT APPROVED JULY 26, 1939, IS PREPARED TO ACCOMMODATE MINERAL ENTRY CARSON CITY 021991, IN ACCORDANCE WITH BUREAU OF LAND MANAGEMENT INSTRUCTIONS "N" DATED AUGUST 25, 1948.

UNITED STATES  
DEPARTMENT OF THE INTERIOR  
BUREAU OF LAND MANAGEMENT  
WASHINGTON, D. C.  
OCTOBER 14, 1948.

THIS PLAT, SHOWING AMENDED LOTTINGS, IS BASED UPON THE OFFICIAL RECORDS AND, HAVING BEEN CORRECTLY PREPARED IN ACCORDANCE WITH THE REGULATIONS, IS HEREBY ACCEPTED.

FOR THE DIRECTOR  
*William F. Richards*  
ACTING CHIEF, BRANCH OF SURVEYS.