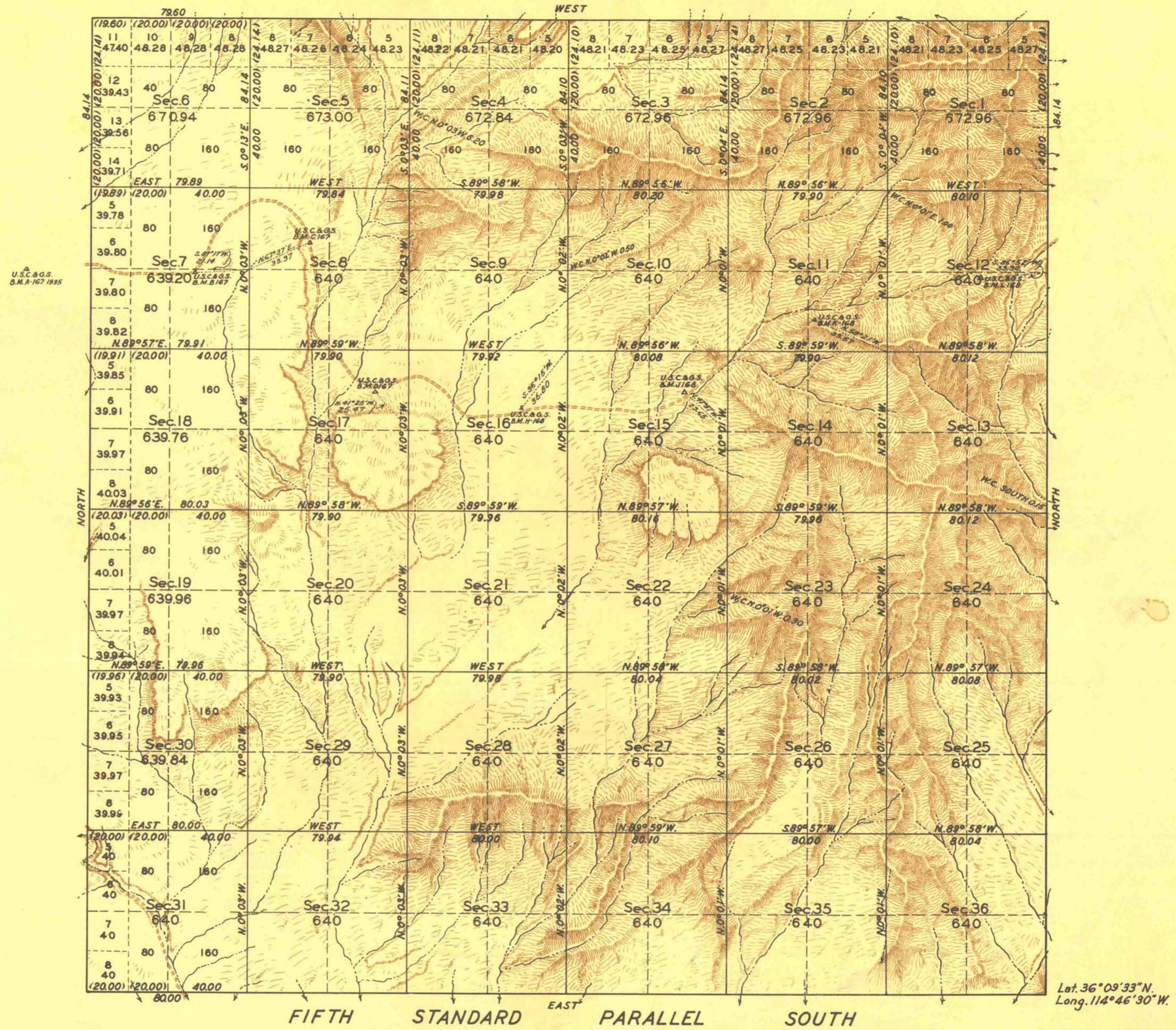


TOWNSHIP N°20 SOUTH, RANGE N° 64 EAST, OF THE MOUNT DIABLO MERIDIAN, NEVADA. INDEPENDENT RESURVEY



Scale: 40 Chains to an Inch Area resurveyed, 23,234.42 Acres.

LINES DESIGNATED	BY WHOM SURVEYED	GROUP		MILEAGE		WHEN SURVEYED	
		N°	DATE	MLS.	CHS.	BEGUN	COMPLETED
Exterior E.N.&W	James W. Hardison and Wilson M° Conkie	237	Nov. 4, 1937	18	7.88	Jan. 14, 1938	Jan. 28, 1938
Subdivisional	Swanholm & Nelson	"	" " "	60	20.52	" " "	" " "
5th Std. Par. S.		169				1931	

Office of Supervisor of Surveys
Denver, Colorado, July 26, 1939
The above plat of Township No. 20 South, Range No. 64 East of the Mount Diablo Meridian, Nevada is strictly conformable to the field notes of the survey thereof which have been examined and approved.

Wm. P. Johnson
Supervisor of Surveys.

UNITED STATES
DEPARTMENT OF THE INTERIOR
GENERAL LAND OFFICE
Washington, D.C., Mar. 4, 1940
The survey represented by this plat having been correctly executed in accordance with the requirements of law and the regulations of this office is hereby accepted.

Joseph W. Johnson
Acting Assistant Commissioner

2

W. P. Johnson