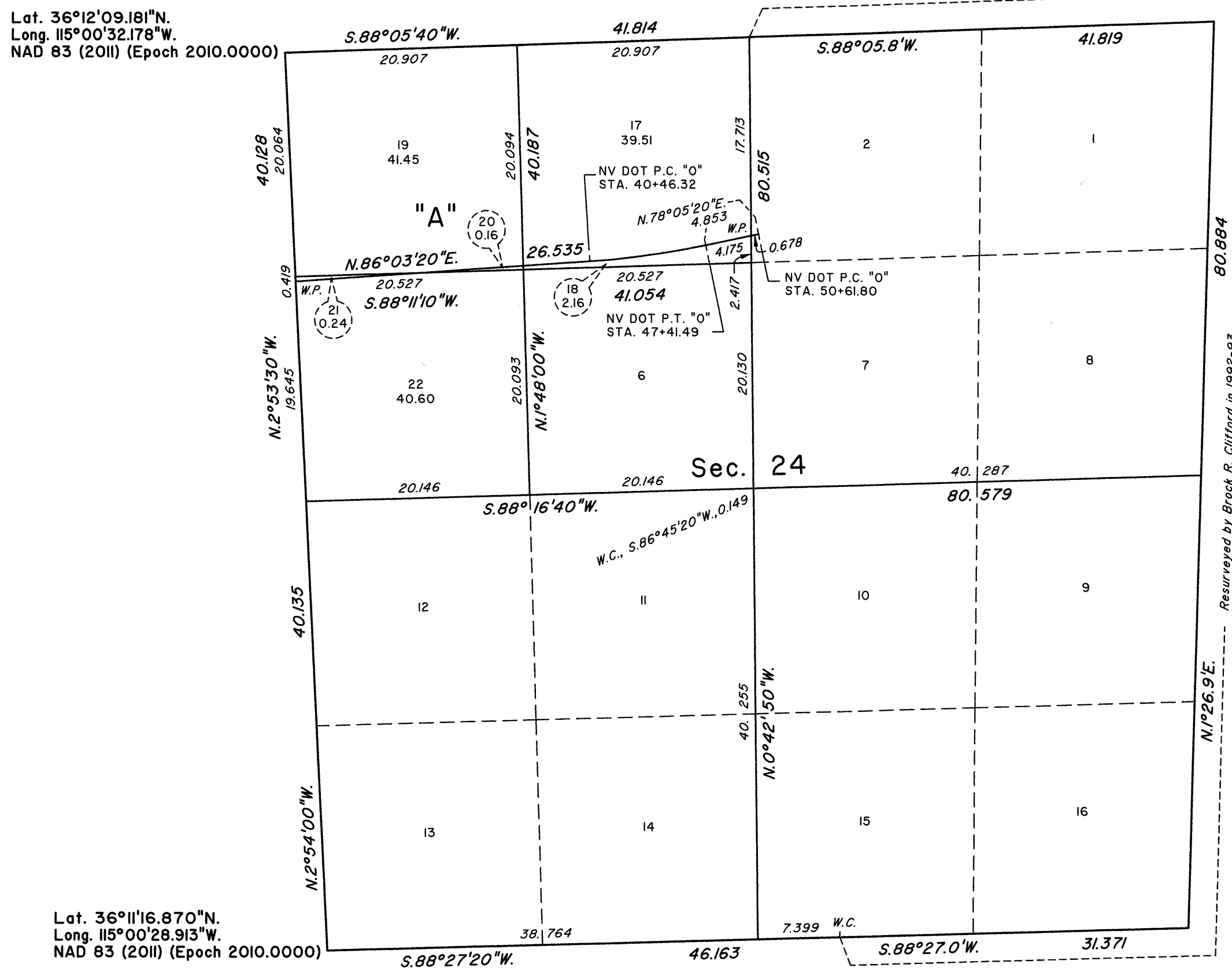
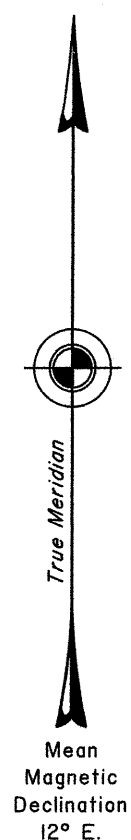


TOWNSHIP 20 SOUTH, RANGE 62 EAST, OF THE MOUNT DIABLO MERIDIAN, NEVADA

DEPENDENT RESURVEY, SUBDIVISION OF SECTION 24 AND METES-AND-BOUNDS SURVEY

CURVE DATA
STA. "0" 40+46.32 P.C. to
STA. "0" 47+41.49 P.C.
Δ = 7°58'00" left
R = 5000 ft.
L = 10.533 chs.
LC = N.82°04'20"E., 10.524 chs..

Lat. 36°12'09.181"N.
Long. 115°00'32.178"W.
NAD 83 (2011) (Epoch 2010.0000)



Lat. 36°11'16.870"N.
Long. 115°00'28.913"W.
NAD 83 (2011) (Epoch 2010.0000)

The history of surveys is contained in the field notes.

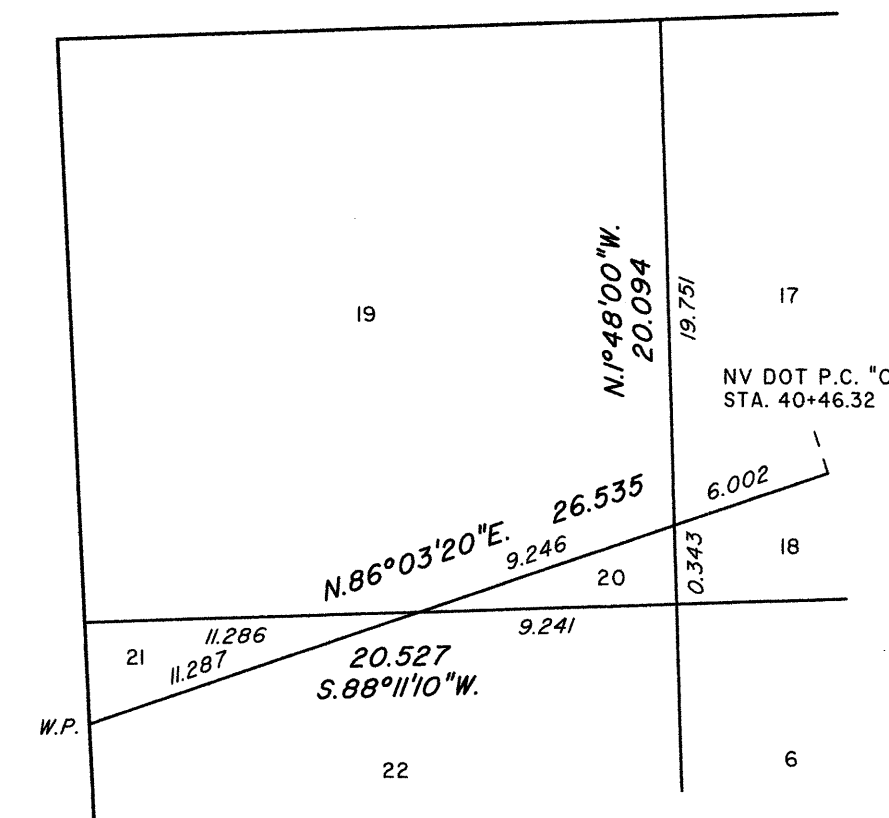
This plat represents the dependent resurvey of a portion of the subdivisional lines designed to restore the corners in their true original locations according to the best available evidence, the subdivision of section 24, and a metes-and-bounds survey of a portion of the centerline of Nevada State Route 147 (Lake Mead Blvd.) in section 24, Township 20 South, Range 62 East, Mount Diablo Meridian, Nevada.

Except as indicated hereon, the lottings and areas are as shown on the plat approved August 31, 1994.

This survey was executed by Craig S. Dukart, Cadastral Surveyor, beginning May 11, 2015 and completed June 24, 2016, pursuant to Special Instructions dated April 22, 2015, for Group No. 944, Nevada.

Detail "A" in Section 24

Not to Scale



UNITED STATES DEPARTMENT OF THE INTERIOR
BUREAU OF LAND MANAGEMENT

Reno, Nevada August 24, 2016

This plat is strictly conformable to the approved field notes, and the survey, having been correctly executed in accordance with the requirements of law and the regulations of this Bureau, is hereby accepted.

For the Director

Chief Cadastral Surveyor for Nevada