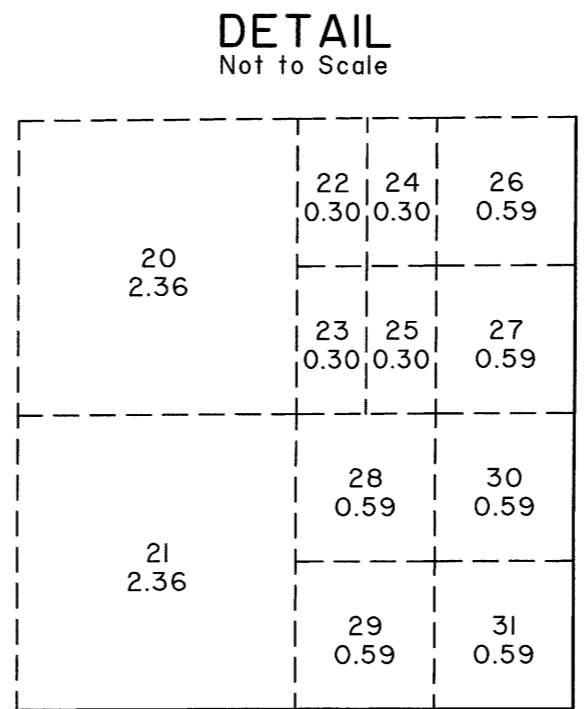
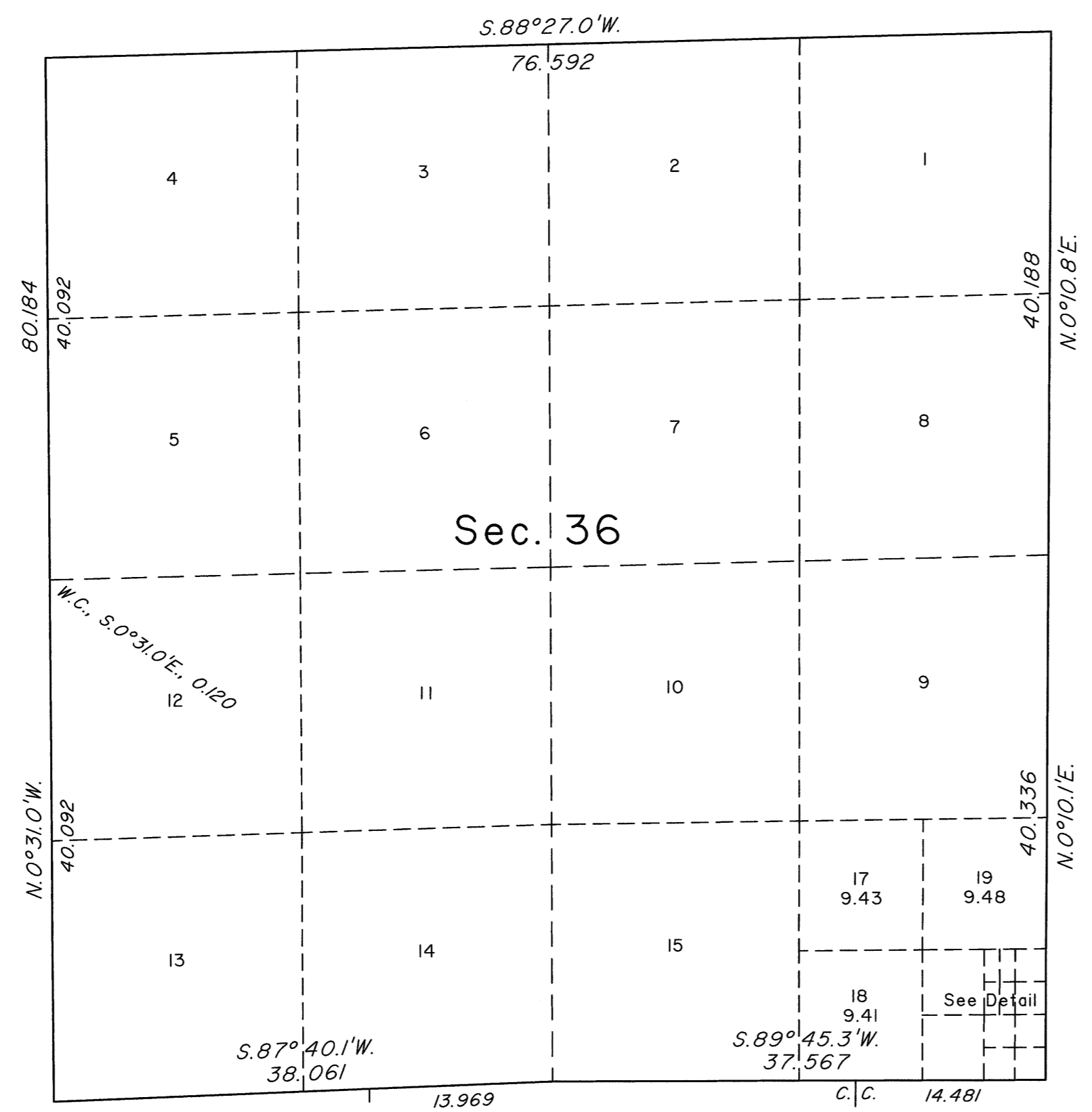


TOWNSHIP 20 SOUTH, RANGE 62 EAST, OF THE MOUNT DIABLO MERIDIAN, NEVADA
SUPPLEMENTAL PLAT OF SECTION 36



This plat showing a subdivision of former lot 16, section 36, Township 20 South, Range 62 East, Mount Diablo Meridian, Nevada, based on the plat accepted August 31, 1994, is prepared to accommodate a direct land sale under provisions of the Federal Land Policy and Management Act.

Plat prepared by Clay W. Morrow, Cartographic Technician, beginning August 30, 2012 and completed October 17, 2012, pursuant to special instructions dated August 30, 2012 and assignment instructions dated August 30, 2012, for Group No. 917, Nevada.

Except as indicated hereon, the lotting and areas are as shown on plat approved April 8, 1882, and the plat accepted August 31, 1994.

UNITED STATES DEPARTMENT OF THE INTERIOR
BUREAU OF LAND MANAGEMENT

Reno, Nevada October 24, 2012

This plat, showing amended lottings, is based upon the official records and, having been correctly prepared in accordance with the requirements of the law and the regulations of this Bureau, is hereby accepted.

For the Director

Chief Cadastral Surveyor for Nevada

