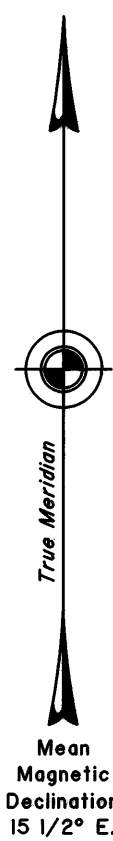
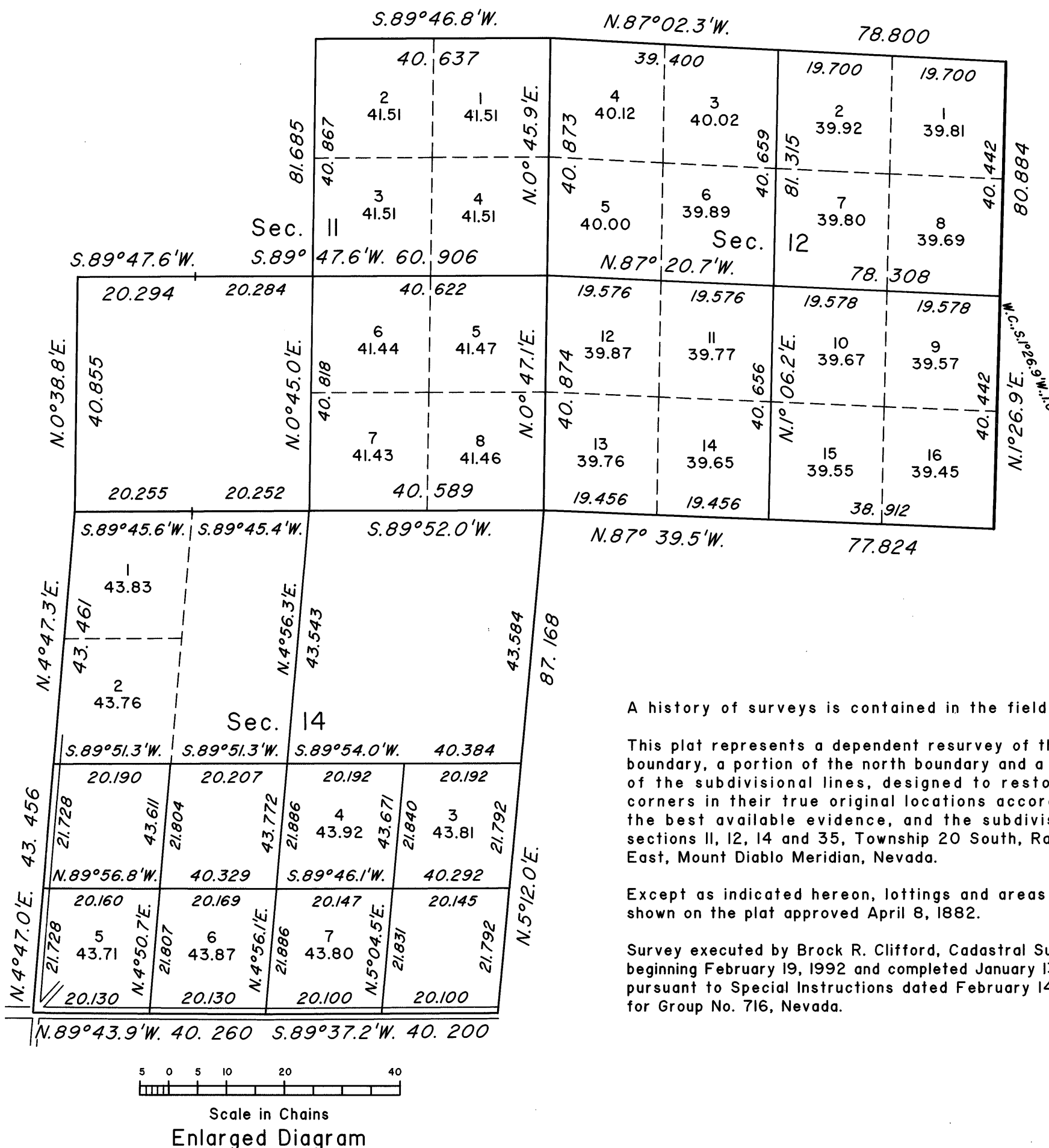
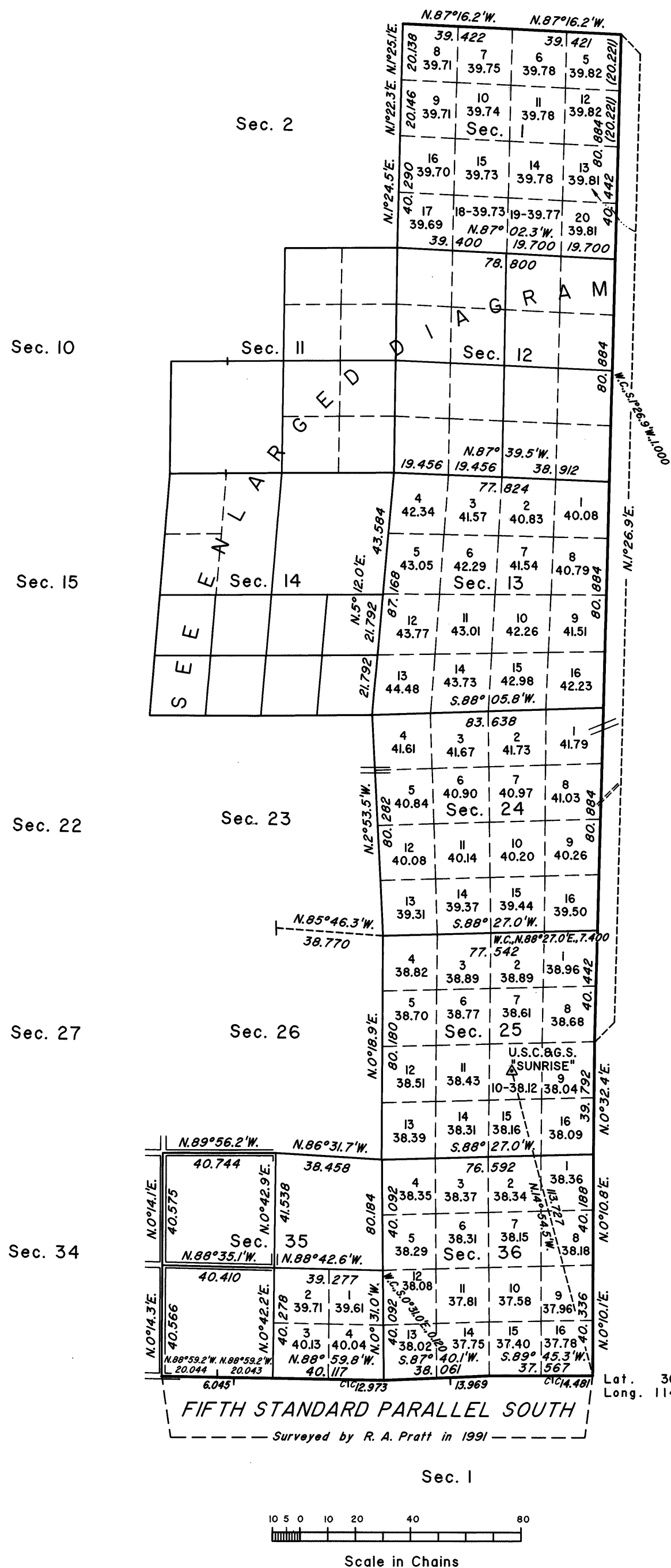


TOWNSHIP 20 SOUTH, RANGE 62 EAST, OF THE MOUNT DIABLO MERIDIAN, NEVADA
DEPENDENT RESURVEY AND SUBDIVISION

OFFICIALLY FILED
NEVADA STATE OFFICE
at 10:00 AM on SEPTEMBER 8, 1994



SURVEYED BY R. H. WOODS AND W. H. MYRICK IN 1881 - 1882



A history of surveys is contained in the field notes.

This plat represents a dependent resurvey of the east boundary, a portion of the north boundary and a portion of the subdivisional lines, designed to restore the corners in their true original locations according to the best available evidence, and the subdivision of sections 12, 14 and 35, Township 20 South, Range 62 East, Mount Diablo Meridian, Nevada.

Except as indicated hereon, lottings and areas are as shown on the plat approved April 8, 1882.

Survey executed by Brock R. Clifford, Cadastral Surveyor, beginning February 19, 1992 and completed January 13, 1993, pursuant to Special Instructions dated February 14, 1992, for Group No. 716, Nevada.

UNITED STATES DEPARTMENT OF THE INTERIOR
BUREAU OF LAND MANAGEMENT

Reno, Nevada August 31, 1994

This plat is strictly conformable to the approved field notes, and the survey, having been correctly executed in accordance with the requirements of law and the regulations of this Bureau, is hereby accepted.

For the Director

Chief Cadastral Surveyor, Nevada