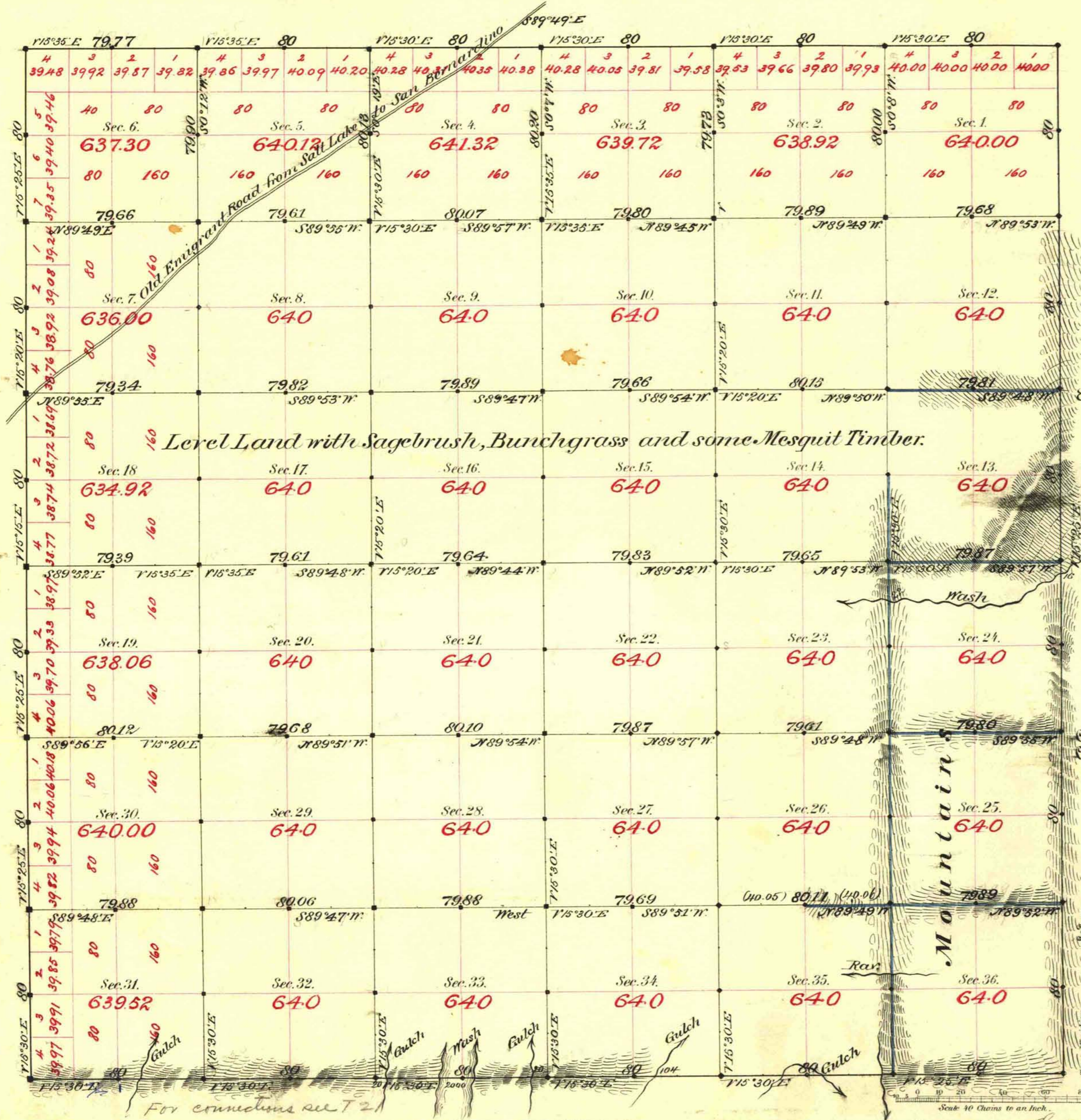


TOWNSHIP N^o 20 SOUTH RANGE N^o 62 EAST MOUNT DIABLO MERIDIAN



Aggregate Area of Public Land surveyed 23025.88 Acres.

Commenced January 11th 1882.
Completed " 17th "

Subdivisions not noted run with a Variation of 15° 25' East.

Surveys Designated	By Whom Surveyed	Date of Contract	Amount of Surveys	When Surveyed
South Bdy.	Bruitts Proctor	April 10 th 1881	6 ⁰⁰ 00 ⁰⁰	1881
N.W. E.	Woods & Myrick	Jan. 28 th "	17-79-77	1882
Subdiv ^{ns} black	"	"	61-74-59	January
" blue	"	"	7-79-43	"

The above Map of Township N^o 20 South of Range N^o 62 East of Mt. Diablo Meridian is strictly conformable to the field notes of the survey thereof on file in this Office, which have been examined and approved.

Surveyor General's Office,
Reno, Nevada

April 8th 1882

C. S. Davis
Sur. Gen. Nev.