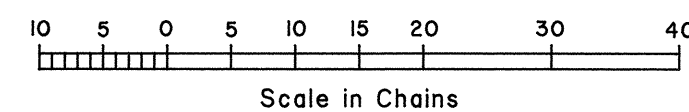
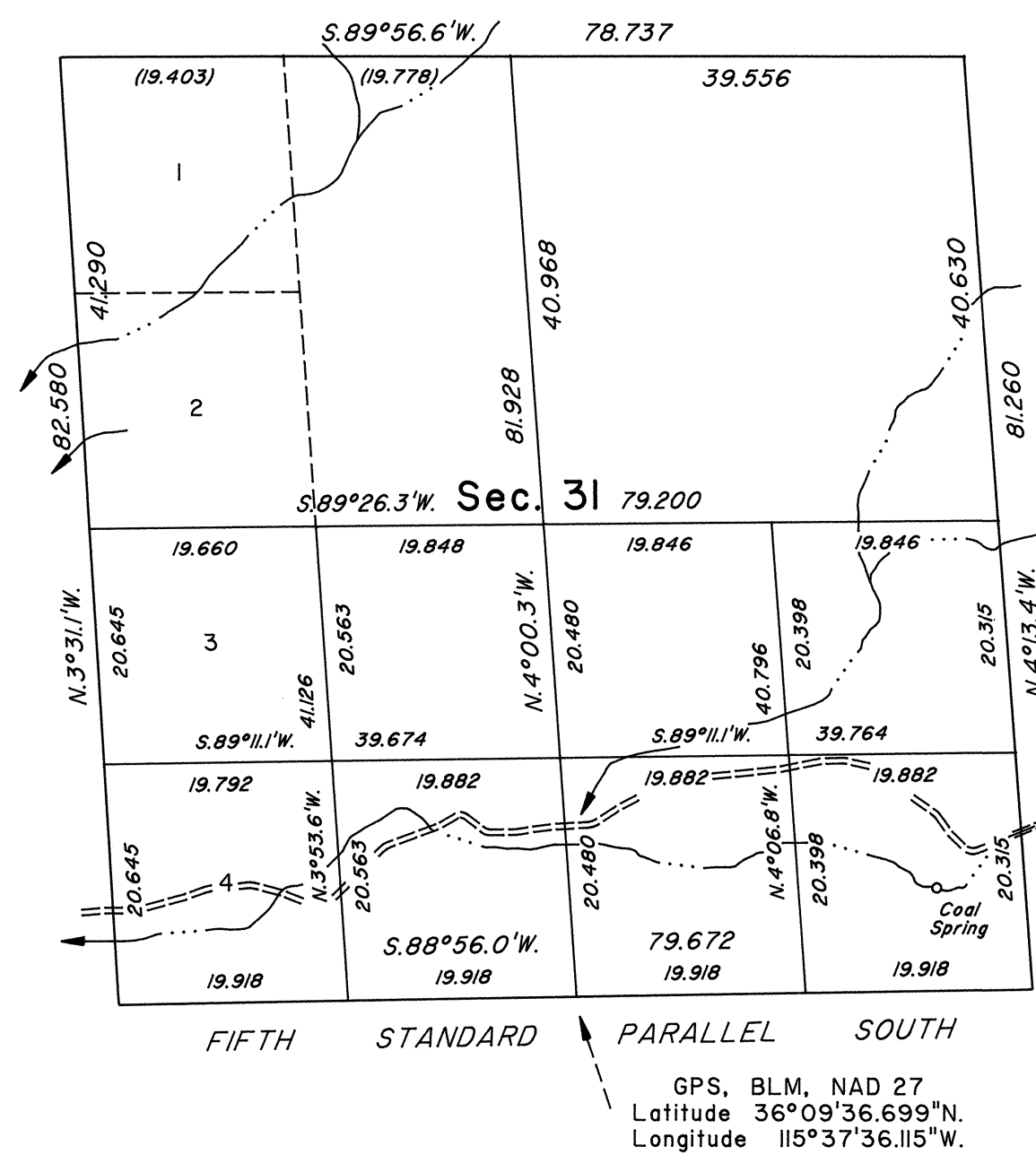
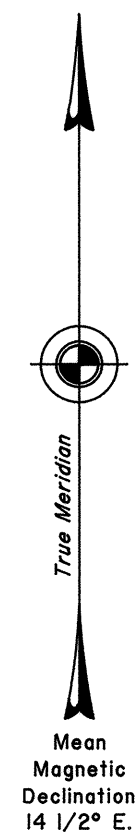


TOWNSHIP 20 SOUTH, RANGE 57 EAST, OF THE MOUNT DIABLO MERIDIAN, NEVADA
DEPENDENT RESURVEY AND SUBDIVISION OF SECTION 31

Sec. 30



A history of surveys is contained in the field notes.

This plat represents the dependent resurvey of the Fifth Standard Parallel South, through a portion of Range 57 East, a portion of the west boundary and a portion of the subdivisional lines designed to restore the corners in their true original locations according to the best available evidence, and the subdivision of section 31, Township 20 South, Range 57 East, Mount Diablo Meridian, Nevada.

The lottings and areas are as shown on the plat approved September 3, 1881.

Survey executed by Robert A. Pratt, Cadastral Surveyor, beginning May 20, 1993, and completed May 26, 1993, pursuant to Special Instructions dated May 11, 1993, for Group No. 735, Nevada.

UNITED STATES DEPARTMENT OF THE INTERIOR
BUREAU OF LAND MANAGEMENT

Reno, Nevada July 19, 1993

This plat is strictly conformable to the approved field notes, and the survey, having been correctly executed in accordance with the requirements of law and the regulations of this Bureau, is hereby accepted.

For the Director

Robert H. Thompson

Acting Chief Cadastral Surveyor, Nevada

T.20S., R.57E., M.D.M.