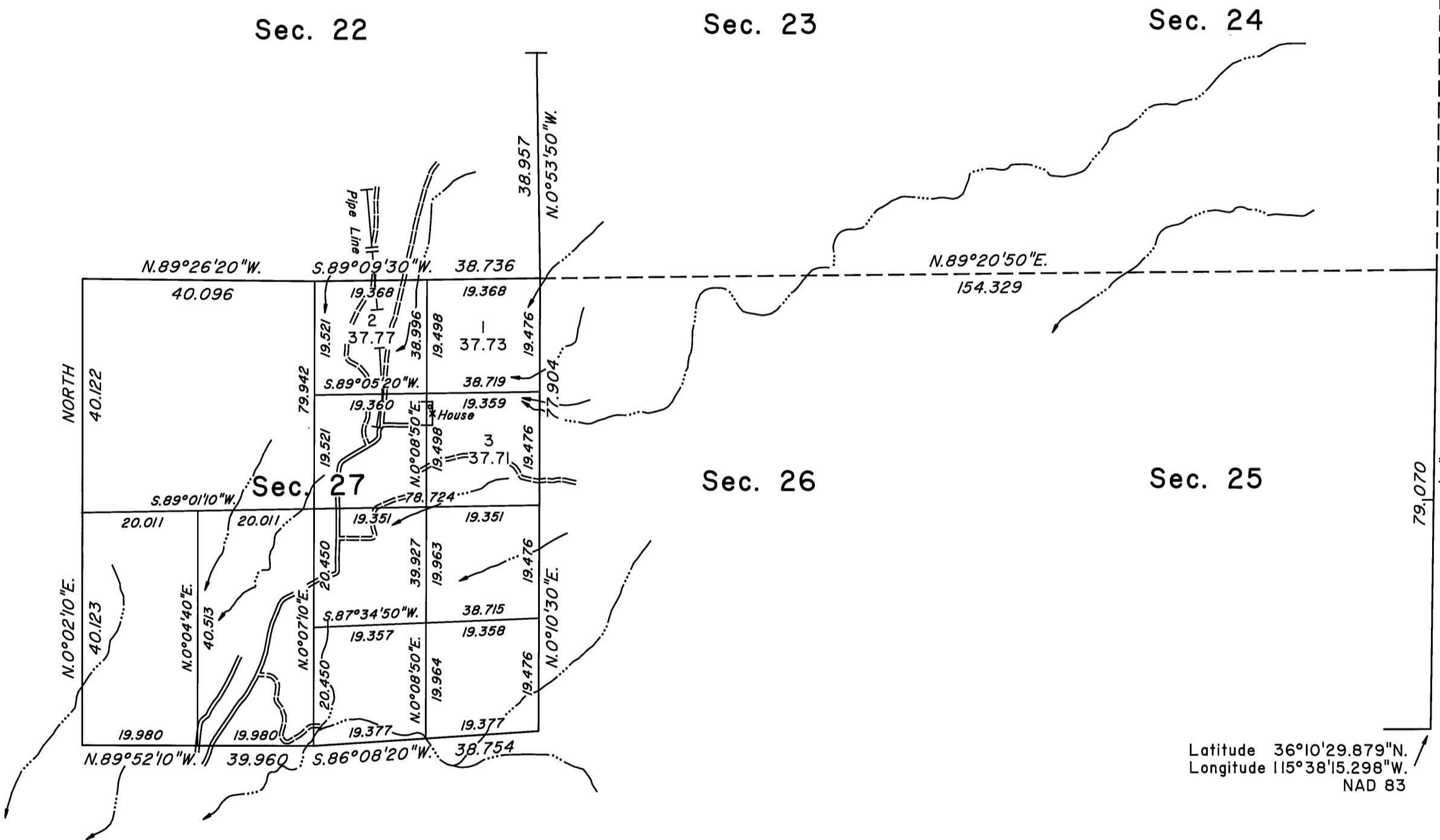
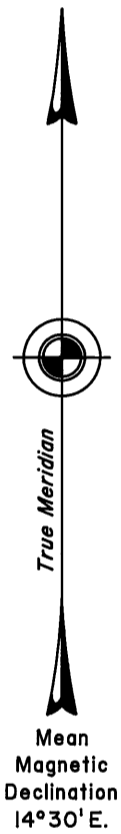


TOWNSHIP 20 SOUTH, RANGE 56 EAST, OF THE MOUNT DIABLO MERIDIAN, NEVADA  
DEPENDENT RESURVEY AND SUBDIVISION

Surveyed by T. Binge in 1881



Latitude 36°10'29.879"N.  
Longitude 115°38'15.298"W.  
NAD 83

A history of surveys is contained in the field notes.

This plat represents the dependent resurvey of a portion of the east boundary and a portion of the subdivisinal lines designed to restore the corners in their true original locations according to the best available evidence, and the subdivision of section 27, Township 20 South, Range 56 East, Mount Diablo Meridian, Nevada.

Except as indicated hereon, the lottings and areas are as shown on the plat approved September 3, 1881.

Survey exected by Daniel Ontiveros, Cadastral Surveyor and Mark G. Petrosine, Surveying Technician, beginning July 12, 2004, and completed July 15, 2005, pursuant to Special Instructions dated July 8, 2004, for Group No. 818, Nevada.

UNITED STATES DEPARTMENT OF THE INTERIOR  
BUREAU OF LAND MANAGEMENT

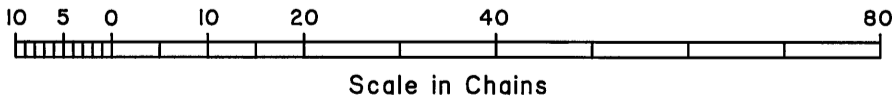
Reno, Nevada January 12, 2007

This plat is strictly conformable to the approved field notes, and the survey, having been correctly executed in accordance with the requirements of law and the regulations of this Bureau, is hereby accepted.

For the Director

*Daniel A. Morlan*

Chief Cadastral Surveyor, Nevada



T.20S., R.56E., M.D.M.