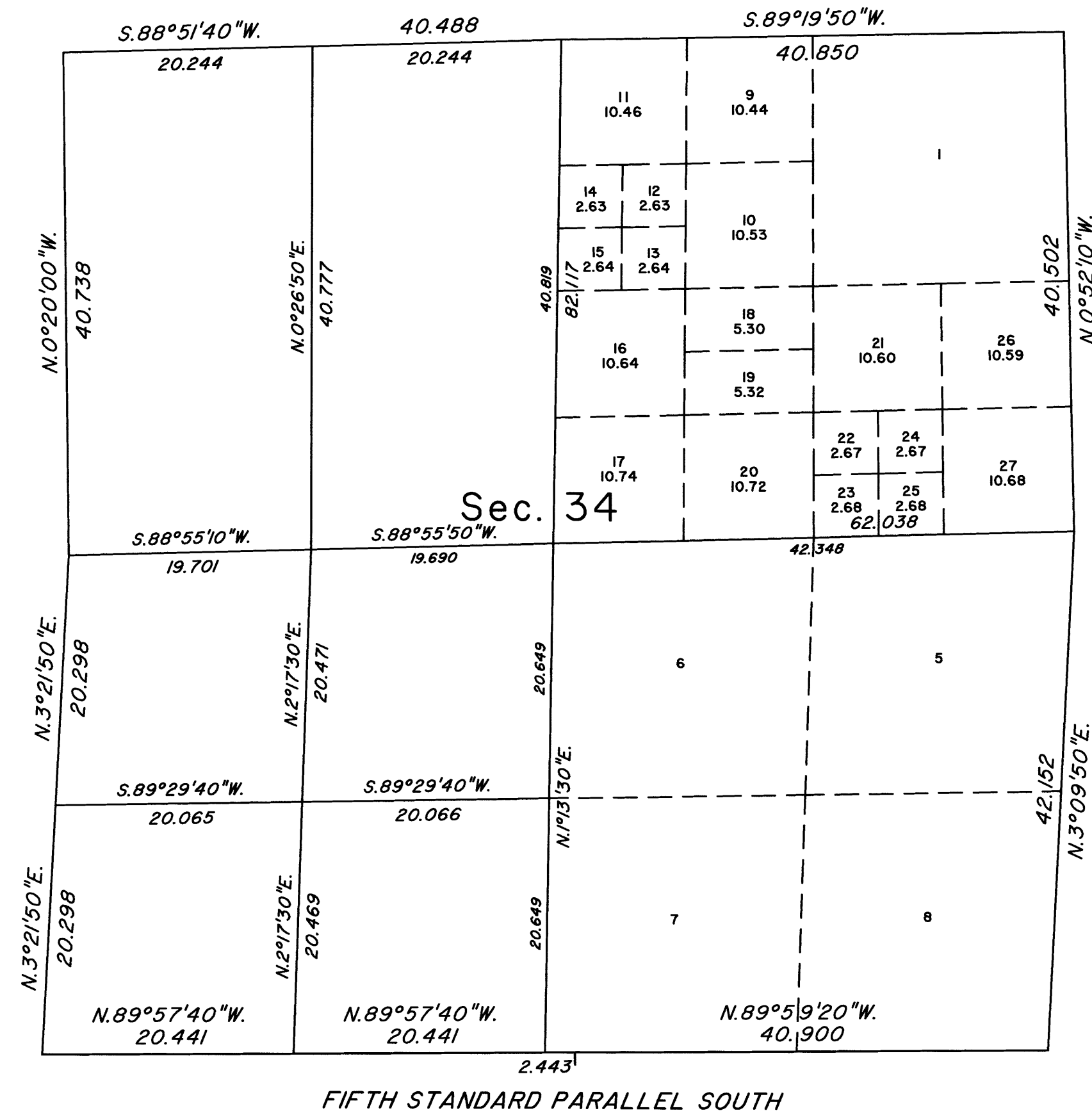
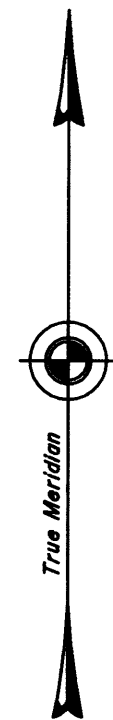


TOWNSHIP 20 SOUTH, RANGE 54 EAST, OF THE MOUNT DIABLO MERIDIAN, NEVADA
SUPPLEMENTAL PLAT OF SECTION 34



This plat showing a subdivision of lots 2, 3 and 4, section 34, Township 20 South, Range 54 East, Mount Diablo Meridian, Nevada, is based upon the plat approved September 3, 1881 and the plat accepted April 19, 2011.

Plat prepared by Brandon K. Grace, Cadastral Surveyor, beginning March 22, 2018 and completed April 2, 2018, pursuant to Special Instructions dated March 22, 2018 and Assignment Instructions dated March 22, 2018, for Group No. 981, Nevada.

Except as indicated hereon, the lotting and areas are as shown on the plat approved September 3, 1881 and the plat accepted April 19, 2011.

UNITED STATES DEPARTMENT OF THE INTERIOR
BUREAU OF LAND MANAGEMENT

Reno, Nevada April 3, 2018

This plat, showing amended lottings, is based upon the official records, and having been correctly prepared in accordance with the requirements of the law and the regulations of this Bureau, is hereby accepted.

For the Director

Michael C. Hammer

Chief Cadastral Surveyor for Nevada

