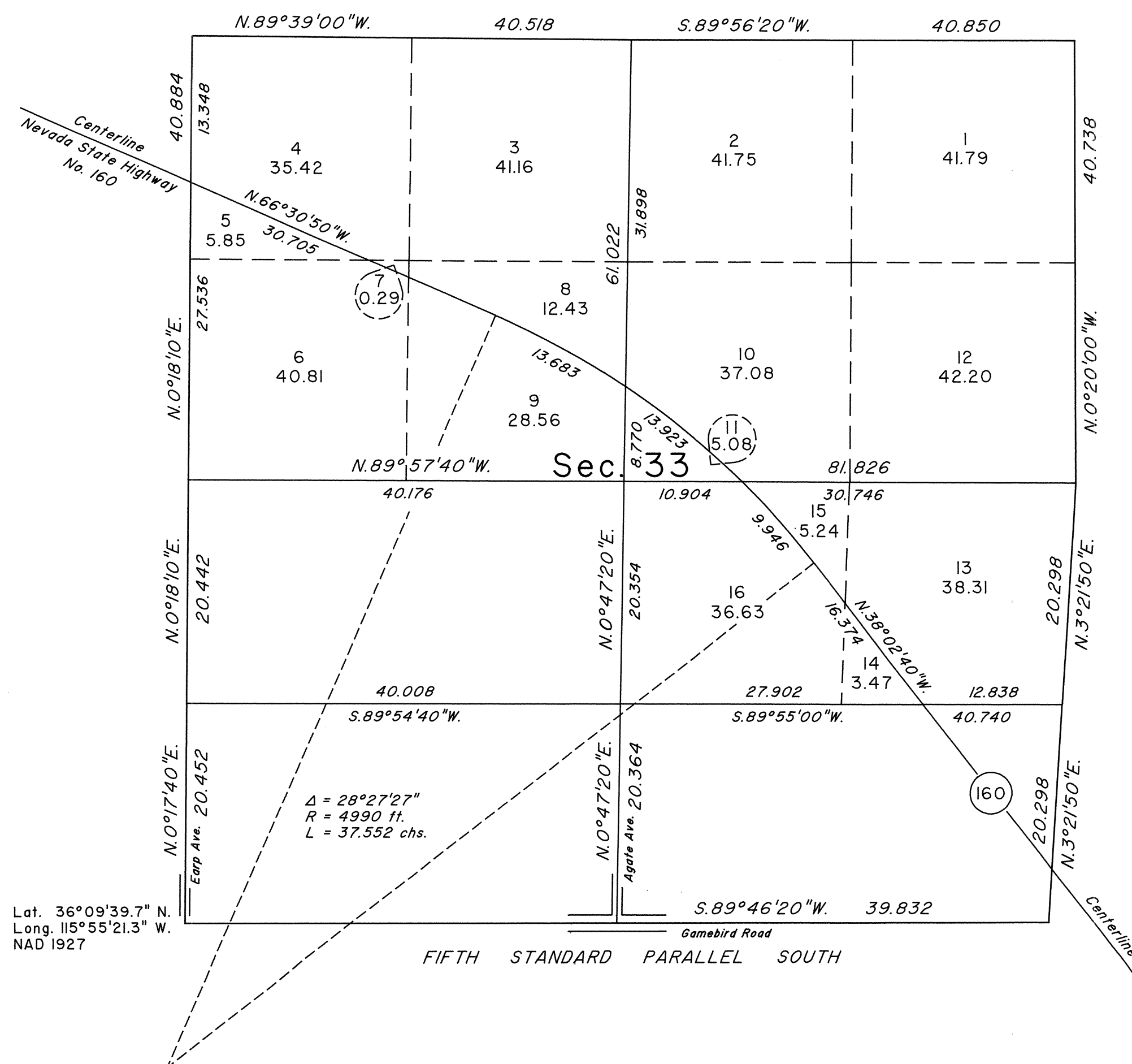
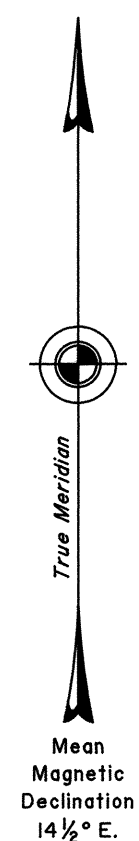


ORIGINAL

OFFICIALLY FILED - NEVADA STATE OFFICE  
at 10:00 AM on JANUARY 23, 1998

# TOWNSHIP 20 SOUTH, RANGE 54 EAST, OF THE MOUNT DIABLO MERIDIAN, NEVADA

## DEPENDENT RESURVEY AND SUBDIVISION



A history of surveys is contained in the field notes.

This plat represents the dependent resurvey of a portion of the Fifth Standard Parallel South on the south boundary, and a portion of the subdivisional lines designed to restore the corners in their true original locations according to the best available evidence, the subdivision of section 33, and a metes-and-bounds survey in section 33, Township 20 South, Range 54 East, Mount Diablo Meridian, Nevada.

Except as indicated hereon, the lottings and areas are as shown on the plat approved September 3, 1881.

For those surveyed lines not showing bearings and distances, refer to the official record of the 1881 survey, approved September 3, 1881.

Survey executed by Richard A. Zaninovich, Cadastral Surveyor, beginning November 14, 1997, and completed November 24, 1997, pursuant to Special Instructions dated November 10, 1997, for Group No. 771, Nevada.

UNITED STATES DEPARTMENT OF THE INTERIOR  
BUREAU OF LAND MANAGEMENT

Reno, Nevada January 21, 1998

This plat is strictly conformable to the approved field notes, and the survey, having been correctly executed in accordance with the requirements of law and the regulations of this Bureau, is hereby accepted.

For the Director

*Robert H. Thompson*

Acting Chief Cadastral Surveyor, Nevada

T.20S., R.54E., M.D.M.