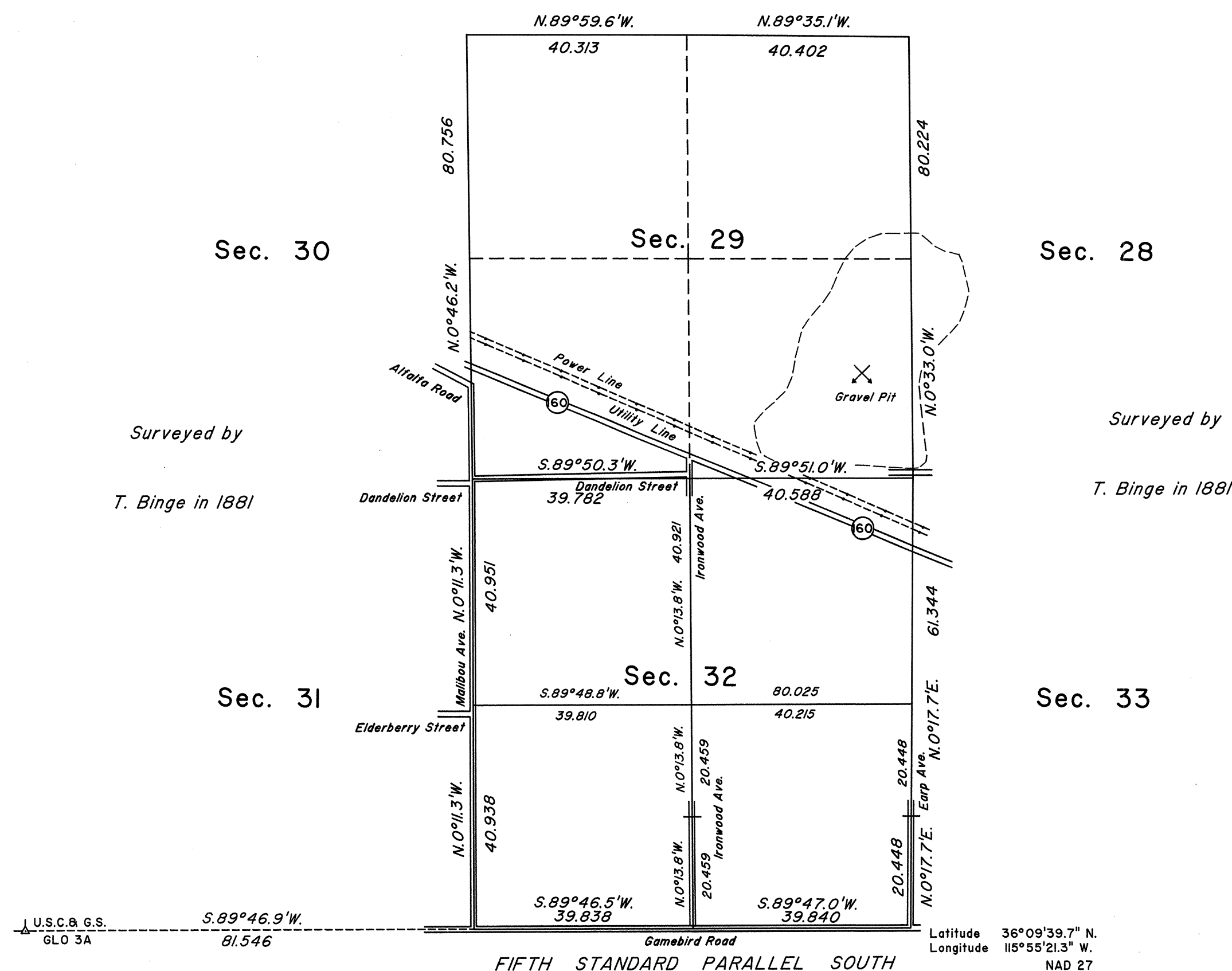
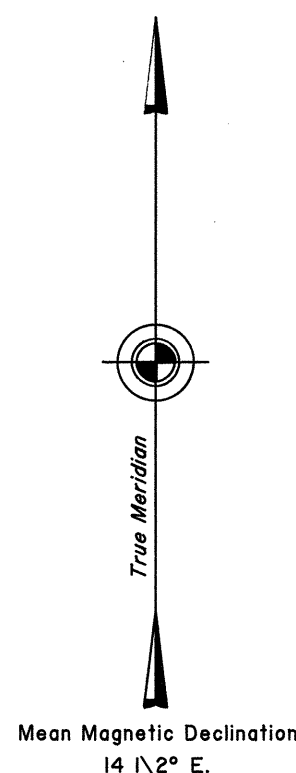


TOWNSHIP 20 SOUTH, RANGE 54 EAST, OF THE MOUNT DIABLO MERIDIAN, NEVADA
DEPENDENT RESURVEY AND SUBDIVISION

Surveyed by

T. Binge in 1881



History of the earlier surveys is contained in the field notes.

This plat represents a dependent resurvey of the Fifth Standard Parallel South, through a portion of Range 54 East, and a portion of the subdivisional lines, designed to restore the corners in their original locations according to the best available evidence; and the survey of the subdivision of section 32 of T. 20 S., R. 54 E., Mount Diablo Meridian, Nevada.

Lotting and areas are as shown on the plat approved September 3, 1881.

Survey executed by Neil R. Forsyth, Cadastral Surveyor, beginning March 15, 1990 and completed April 16, 1990, under Special Instructions dated March 14, 1990, for Group No. 685, Nevada.

UNITED STATES DEPARTMENT OF THE INTERIOR
BUREAU OF LAND MANAGEMENT

Reno, Nevada September 27, 1990

This plat is strictly conformable to the approved field notes, and the survey, having been correctly executed in accordance with the requirements of law and the regulations of this Bureau, is hereby accepted.

For the Director

John S. Parrish
Chief Cadastral Surveyor