

TOWNSHIP 20 NORTH, RANGE 64 EAST, OF THE MOUNT DIABLO MERIDIAN, NEVADA

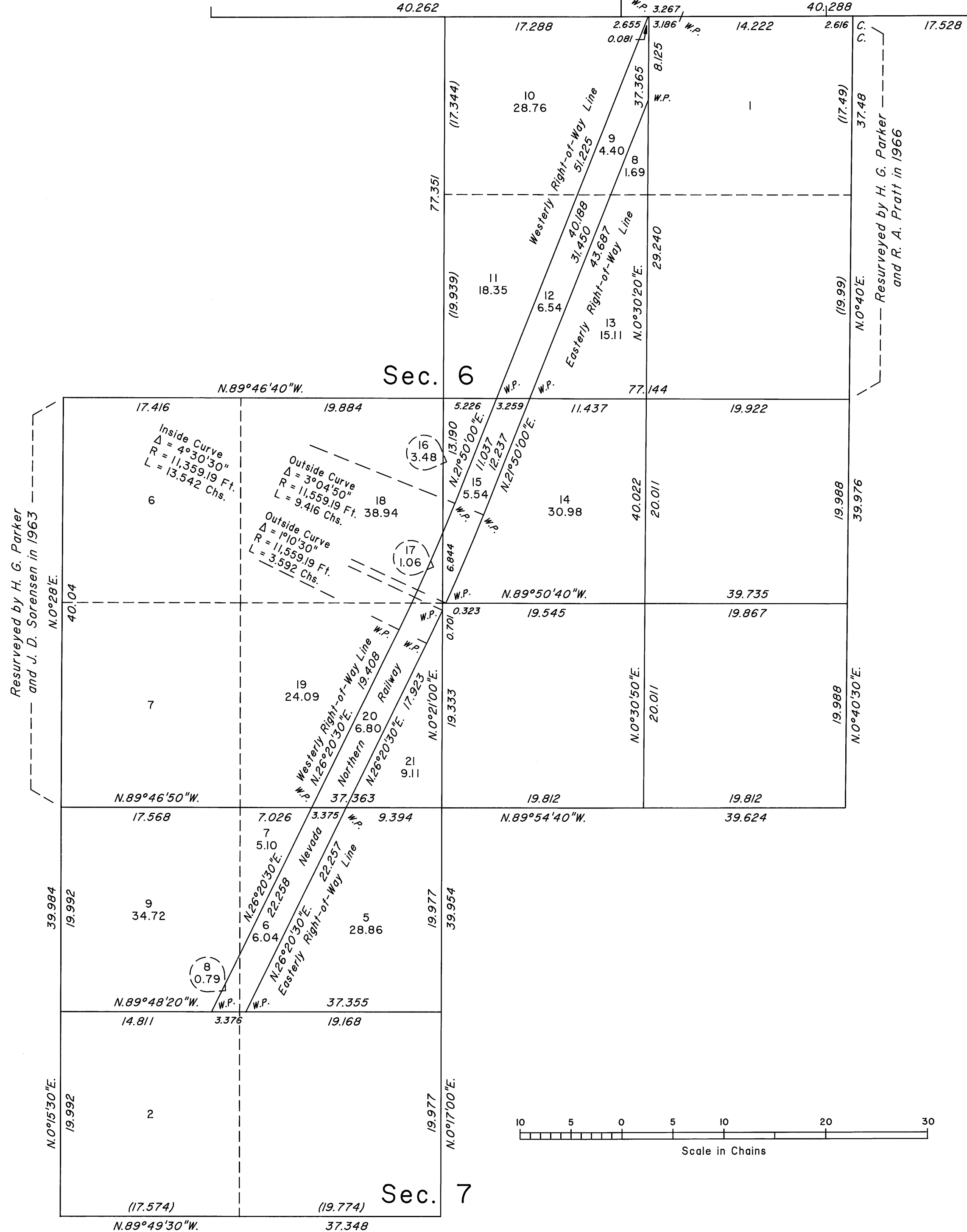
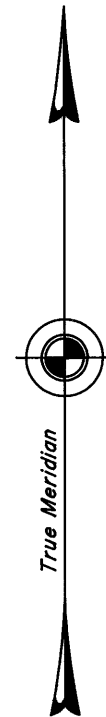
Sec. 35

ENLARGED DIAGRAM

Sec. 36

FOURTH STANDARD PARALLEL NORTH  
T.21N., R.63E.

S.89°59'40"W. 40.262  
S.89°53'20"W. 40.288



Reference should be made to Sheet No. 1 for survey information.

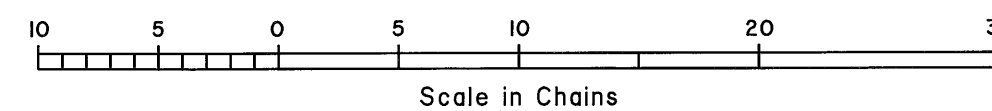
UNITED STATES DEPARTMENT OF THE INTERIOR  
BUREAU OF LAND MANAGEMENT

Reno, Nevada April 13, 2010

This plat is strictly conformable to the approved field notes, and the survey, having been correctly executed in accordance with the requirements of law and the regulations of this Bureau, is hereby accepted.

For the Director

Chief Cadastral Surveyor, Nevada



OFFICIALLY FILED  
NEVADA STATE OFFICE  
at 10:00 AM on April 15, 2010

T.20N., R.64E., M.D.M.