

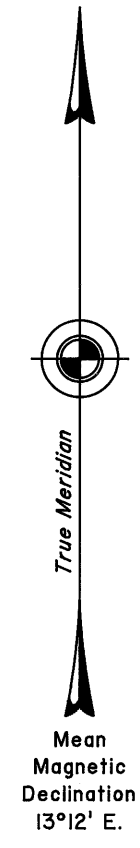
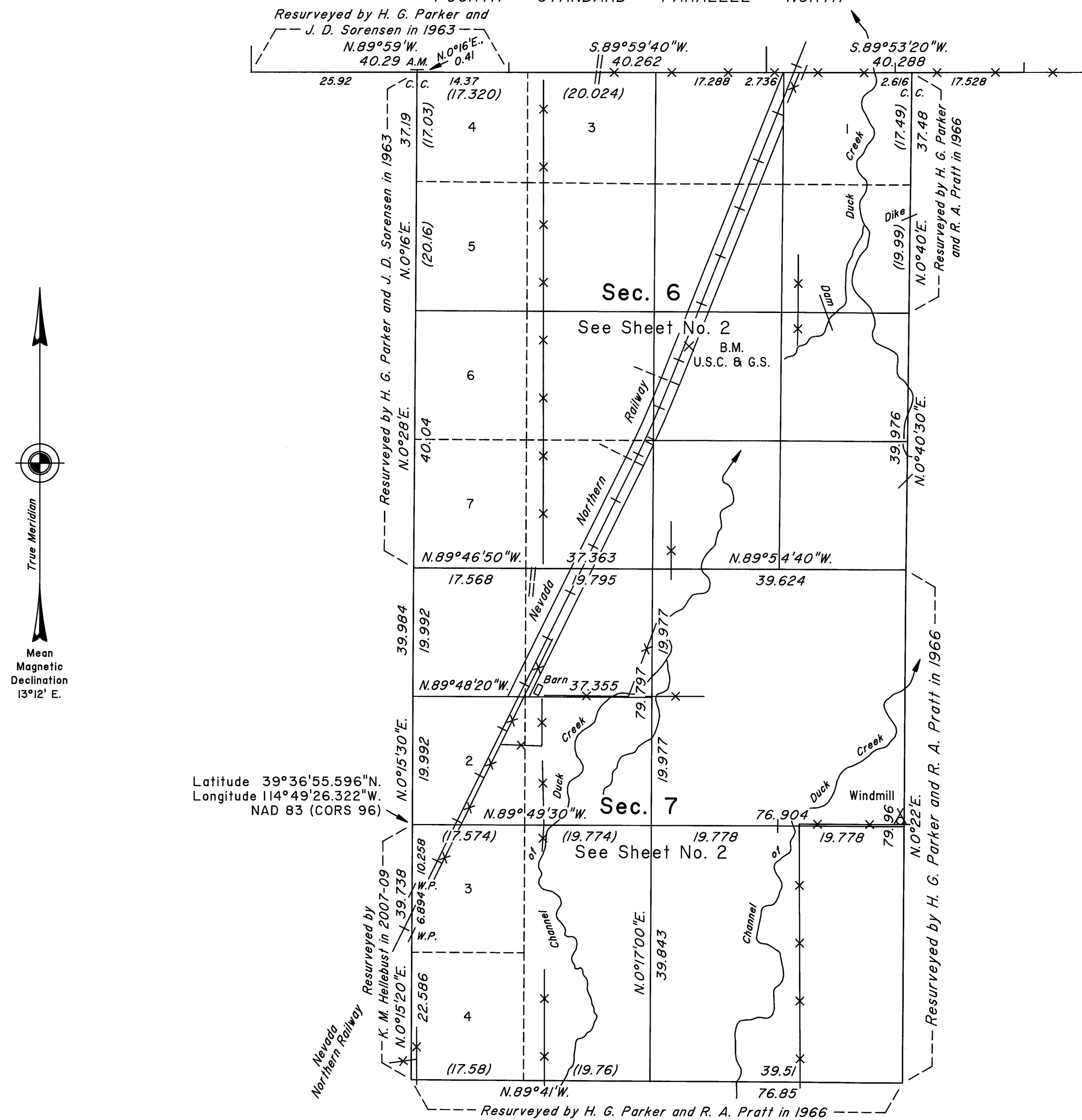
TOWNSHIP 20 NORTH, RANGE 64 EAST, OF THE MOUNT DIABLO MERIDIAN, NEVADA  
DEPENDENT RESURVEY, SUBDIVISION AND METES-AND-BOUNDS SURVEY

Sec. 35

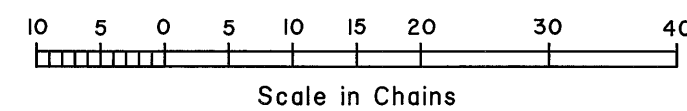
Sec. 36

T.21N., R.63E.

FOURTH STANDARD PARALLEL NORTH



Latitude 39°36'55.596"N.  
Longitude 114°49'26.322"W.  
NAD 83 (CORS 96)



A history of surveys is contained in the field notes.

This plat, in two sheets, represents the dependent resurvey of the Fourth Standard Parallel North through a portion of Range 63 East, a portion of the west boundary and a portion of the subdivisional lines designed to restore the corners in their true original locations according to the best available evidence, the subdivision of sections 6 and 7, and metes-and-bounds surveys of portions of the easterly and westerly right-of-way lines of the Nevada Northern Railway, Township 20 North, Range 64 East, Mount Diablo Meridian, Nevada.

Except as indicated hereon, the lottings and areas are as shown on the plat approved June 15, 1872, and the plat accepted January 27, 1971.

Survey executed by Kane M. Hellebust, Cadastral Surveyor, and Clay W. Morrow, Surveying Technician, beginning June 17, 2008, and completed October 3, 2009, pursuant to Special Instructions dated August 8, 2007, for Group No. 857, Nevada.

UNITED STATES DEPARTMENT OF THE INTERIOR  
BUREAU OF LAND MANAGEMENT

Reno, Nevada April 13, 2010

This plat is strictly conformable to the approved field notes, and the survey, having been correctly executed in accordance with the requirements of law and the regulations of this Bureau, is hereby accepted.

For the Director

Chief Cadastral Surveyor, Nevada

OFFICIALLY FILED  
NEVADA STATE OFFICE  
at 10:00 AM on April 15, 2010