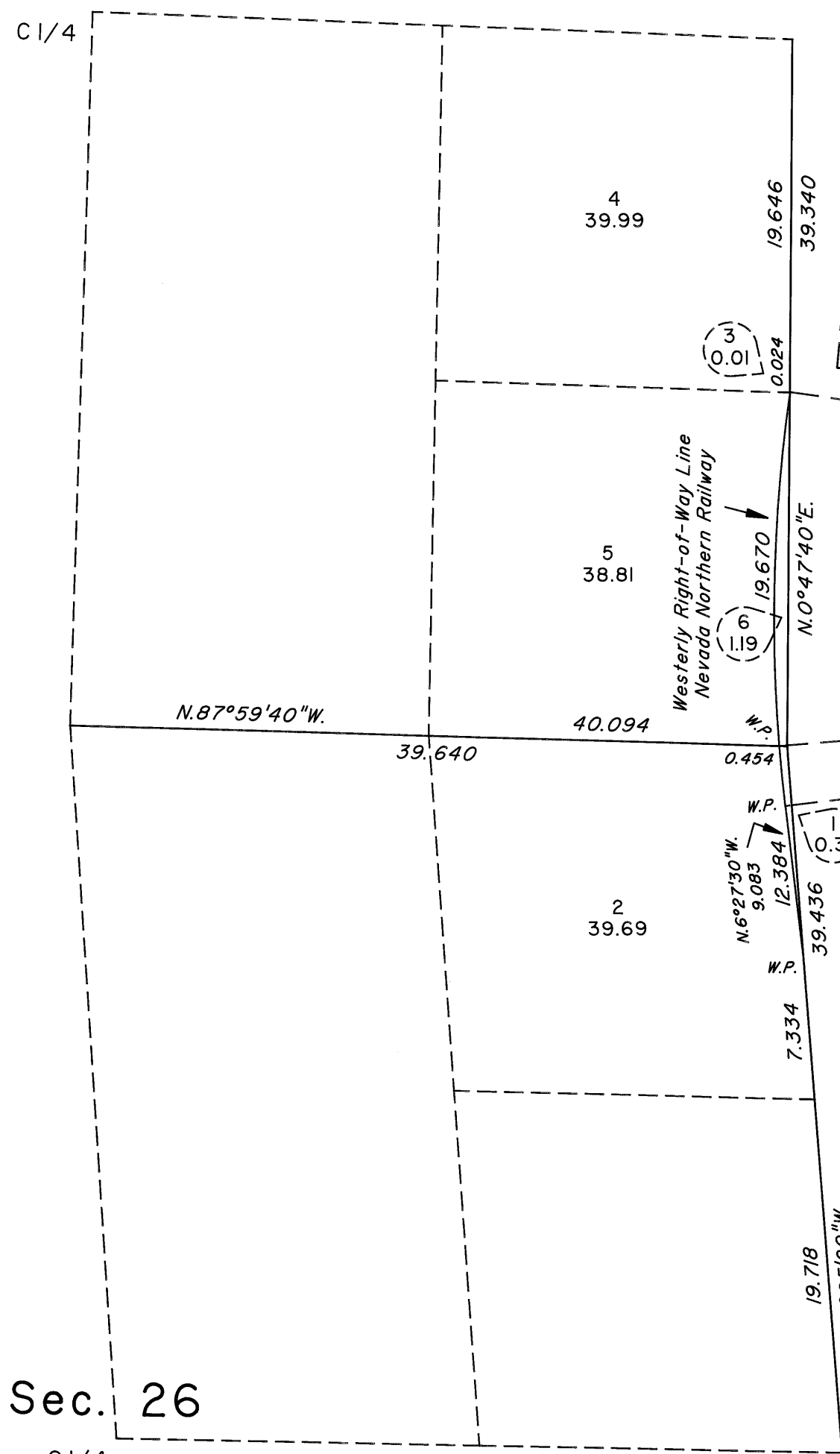


TOWNSHIP 20 NORTH, RANGE 63 EAST, OF THE MOUNT DIABLO MERIDIAN, NEVADA
ENLARGED DIAGRAM

OFFICIALLY FILED
NEVADA STATE OFFICE
at 10:00 AM on February 19, 2010

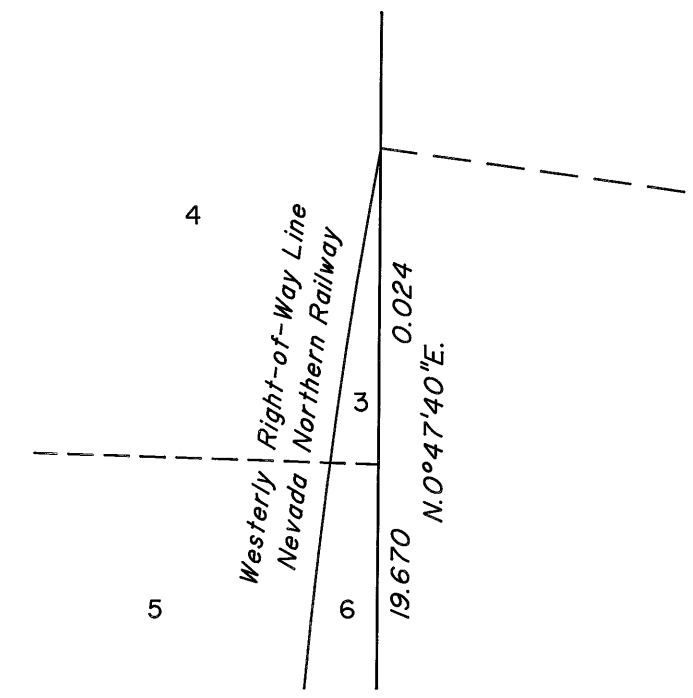
Sec. 23



$\Delta = 12^\circ 48' 00''$
 $R = 5829.65 \text{ Ft.}$
 $L = 19.732 \text{ Chs.}$

$\Delta = 2^\circ 10' 40''$
 $R = 5829.65 \text{ Ft.}$
 $L = 3.357 \text{ Chs.}$

DETAIL "A"
Not to Scale



Reference should be made to Sheet No. 1 for survey information.

UNITED STATES DEPARTMENT OF THE INTERIOR
BUREAU OF LAND MANAGEMENT
Reno, Nevada February 18, 2010

This plat is strictly conformable to the approved field notes, and the survey, having been correctly executed in accordance with the requirements of law and the regulations of this Bureau, is hereby accepted.

For the Director

Chief Cadastral Surveyor, Nevada

