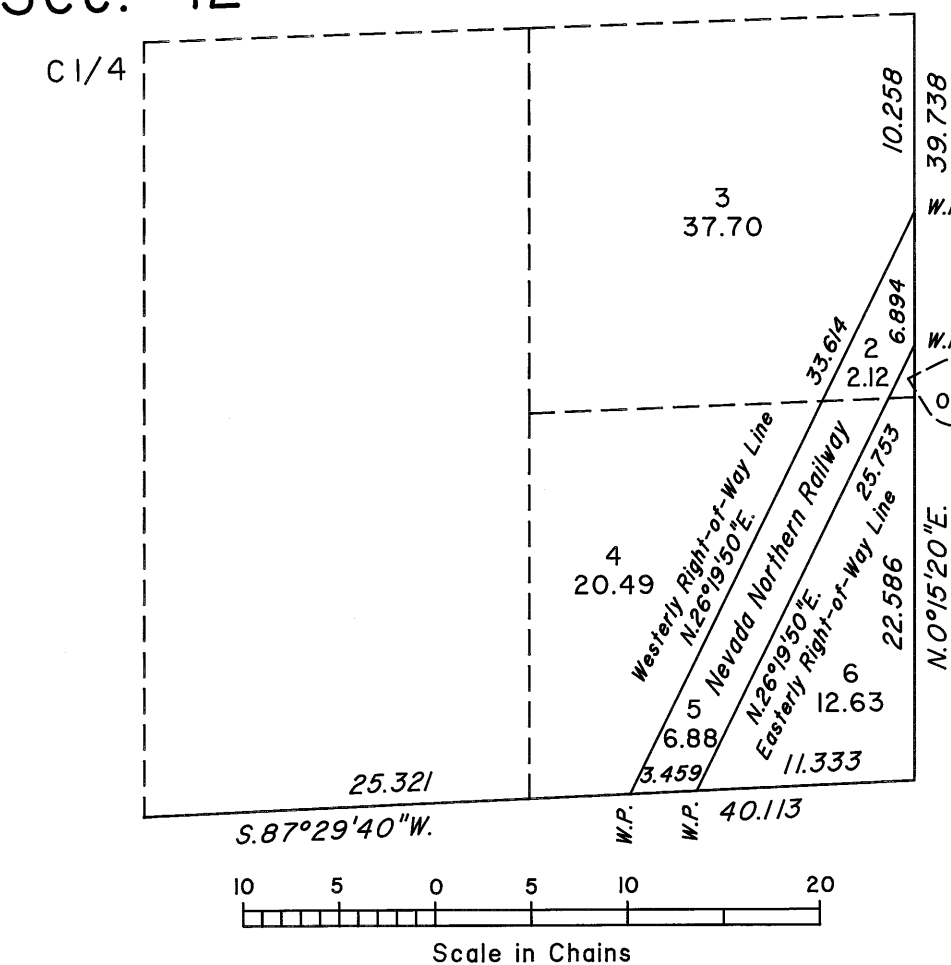


TOWNSHIP 20 NORTH, RANGE 63 EAST, OF THE MOUNT DIABLO MERIDIAN, NEVADA
DEPENDENT RESURVEY, SUBDIVISION AND METES-AND-BOUNDS SURVEY

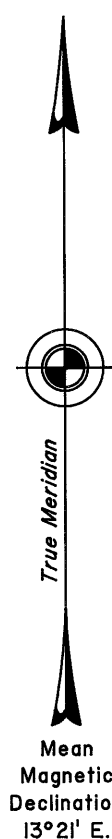
Sec. 34 Sec. 35

ENLARGED DIAGRAM

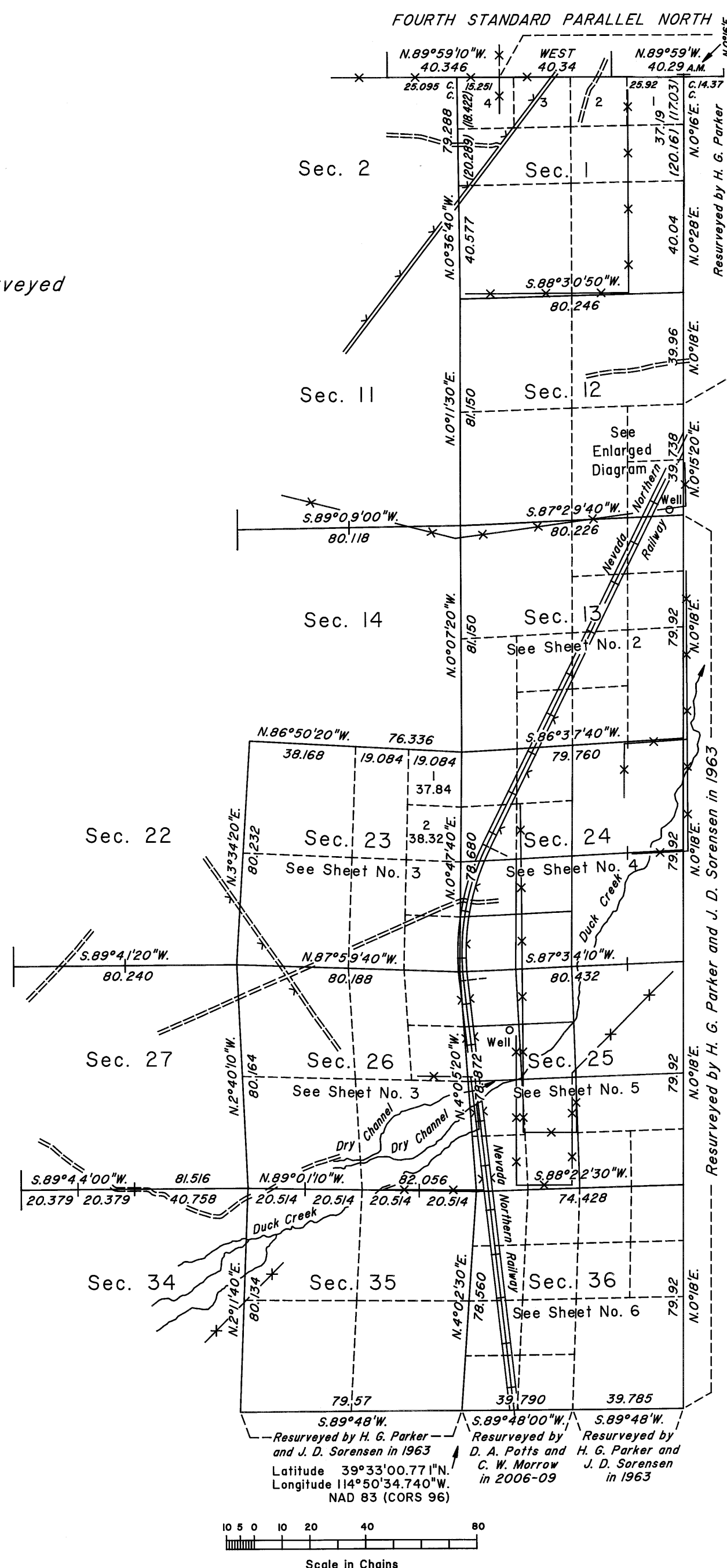
Sec. 12



Unsurveyed



Surveyed by
E. B. Monroe and
A. G. Bateman
in 1872



A history of surveys is contained in the field notes.

This plat, in six sheets, represents the dependent resurvey of the Fourth Standard Parallel North, through a portion of Range 63 East, a portion of the east boundary, and a portion of the subdivisional lines designed to restore the corners in their true original locations according to the best available evidence, the subdivision of sections 24 and 25, and metes-and-bounds surveys of portions of the easterly and westerly right-of-way lines of the Nevada Northern Railway, Township 20 North, Range 63 East, Mount Diablo Meridian, Nevada.

Except as indicated hereon, the lottings and areas are as shown on the plat approved June 15, 1872.

Survey executed by Kane M. Hellebust, Cadastral Surveyor, beginning September 20, 2007, and completed June 14, 2009, pursuant to Special Instructions dated August 8, 2007, for Group No. 856, Nevada.

UNITED STATES DEPARTMENT OF THE INTERIOR
BUREAU OF LAND MANAGEMENT

Reno, Nevada February 18, 2010

This plat is strictly conformable to the approved field notes, and the survey, having been correctly executed in accordance with the requirements of law and the regulations of this Bureau, is hereby accepted.

For the Director

Chief Cadastral Surveyor, Nevada