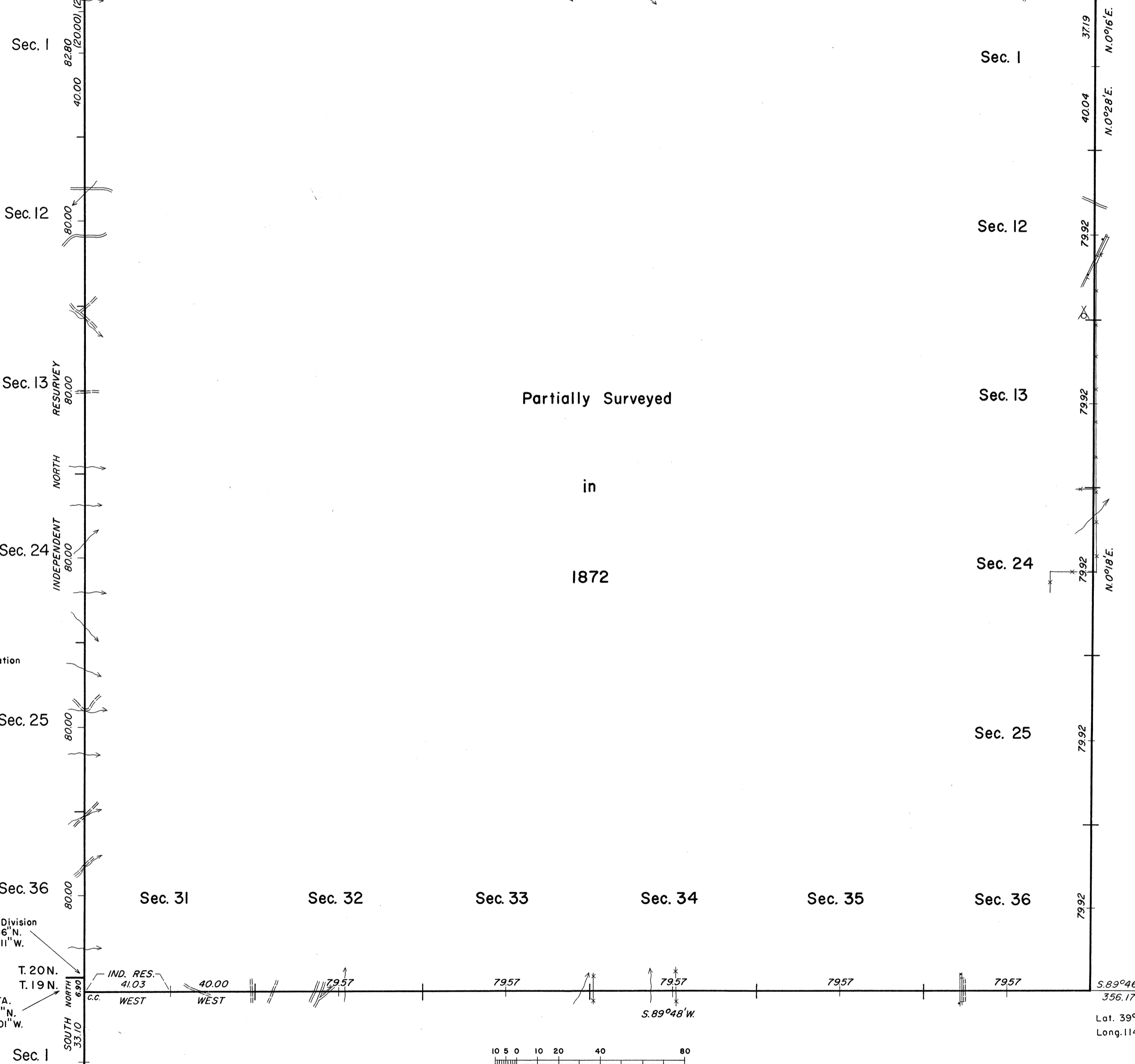
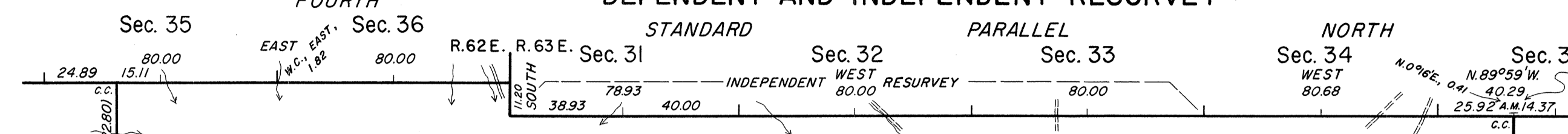


TOWNSHIP 20 NORTH, RANGE 63 EAST, OF THE MOUNT DIABLO MERIDIAN, NEVADA

OFFICIALLY FILED
NEVADA LAND OFFICE
10:00 A.M., APRIL 13, 1967

FOURTH DEPENDENT AND INDEPENDENT RESURVEY



B.L.M. TEL. STA.
Latitude 39°38'12.343"N.
Longitude 114°49'22.723"W.

History of the earlier surveys is contained in the field notes.

This plat represents the dependent resurvey of the east boundary, designed to restore the corners in their true original locations according to the best available evidence, and the independent resurvey of the east boundary of T. 20 N., R. 62 E.

A dependent and independent resurvey of the south boundary, a dependent and independent resurvey of the south boundary of T. 21 N., R. 63 E., and the dependent resurvey of the south boundary of T. 21 N., R. 62 E., was executed concurrently under T. 19 N., R. 63 E., T. 21 N., R. 63 E., and T. 21 N., R. 62 E., respectively.

Survey executed by Horace G. Parker and John D. Sorensen, Cadastral Surveyors, beginning August 23, 1963, and completed September 30, 1963, pursuant to Special Instructions for Group No. 413, Nevada, dated June 14, 1963.

Partially Surveyed

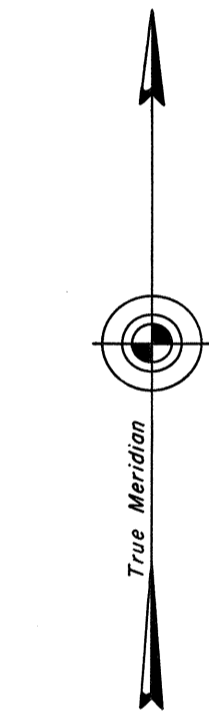
in
1872

UNITED STATES DEPARTMENT OF THE INTERIOR
BUREAU OF LAND MANAGEMENT
Washington, D. C. March 9, 1967

This plat is strictly conformable to the approved field notes, and the survey, having been correctly executed in accordance with the requirements of law and the regulations of this Bureau, is hereby accepted.

For the Director

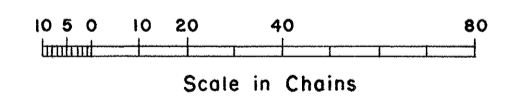
E. Pennington
Chief, Division of Engineering



Mean magnetic declination
17°E.

"CAM"
Nevada Planning Division
Lat. 39°33'04.646"N.
Long. 114°56'08.011"W.

B.L.M. TEL. STA.
T. 19 N.
Lat. 39°33'04.57"N.
Long. 114°56'08.01"W.



Lat. 39°33'01.1"N.
Long. 114°49'24.9"W.