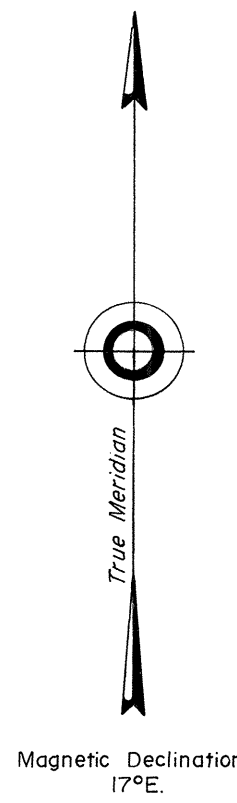
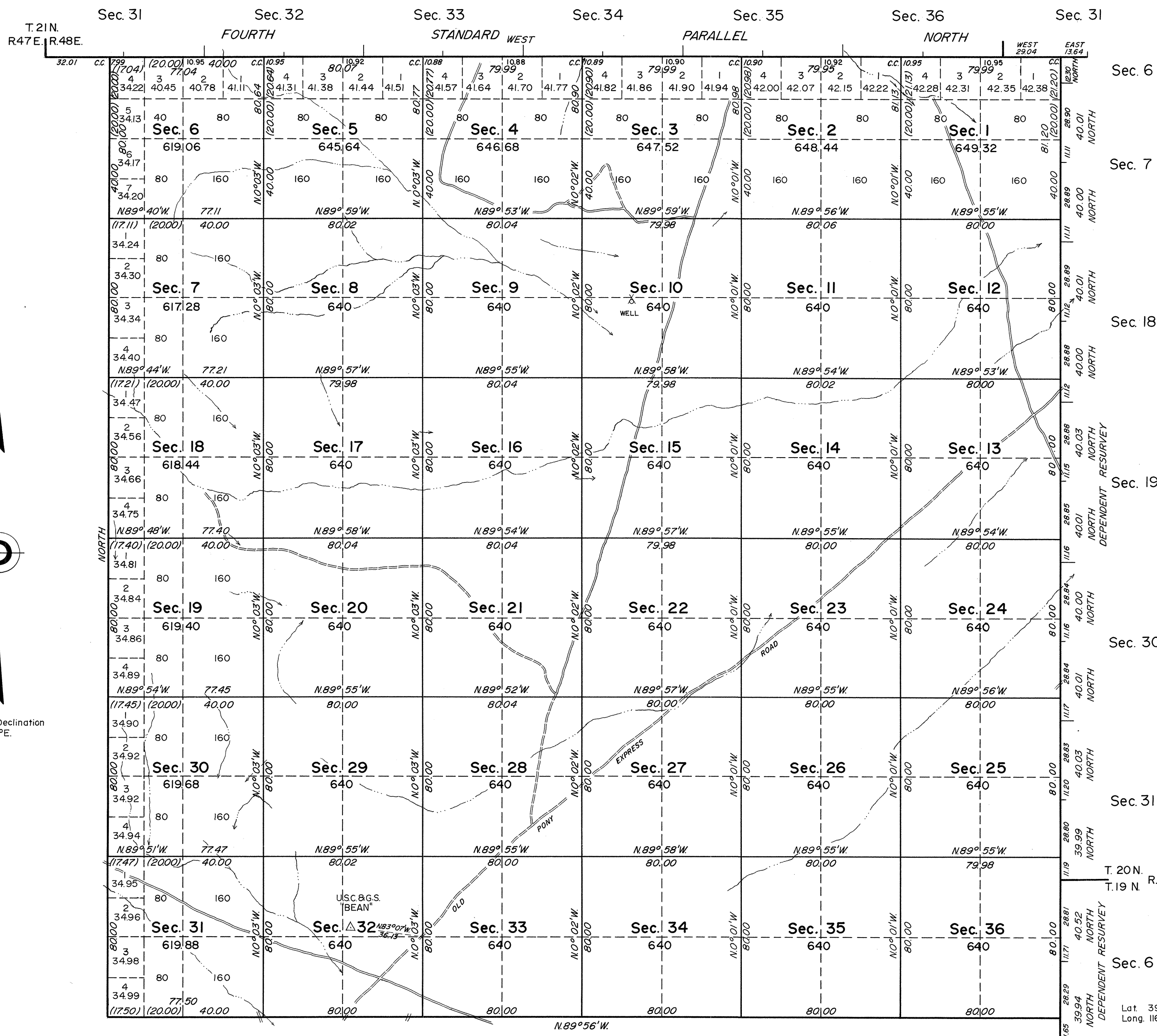


TOWNSHIP 20 NORTH, RANGE 48 EAST, OF THE MOUNT DIABLO MERIDIAN, NEVADA

OFFICIALLY FILED  
NEVADA LAND OFFICE  
10:00 A.M., MAY 16, 1966



Scale in Chains  
Area Surveyed 22,951.34 Acres

Sec. 6  
Sec. 7  
Sec. 18  
Sec. 19  
Sec. 30  
Sec. 31  
Sec. 6

History of earlier surveys is contained in the field notes.

This plat represents the dependent resurvey of the west boundary of T. 20 N., R. 49 E., designed to restore the corners in their true original locations according to the best available evidence; and, the survey of the subdivisional lines of T. 20 N., R. 48 E.

Survey executed by Alburn D. Griffin and John D. Sorensen, Cadastral Surveyors, June 24 to July 14, 1964, under Special Instructions dated February 3, 1964, for Group No. 418, Nevada.

UNITED STATES DEPARTMENT OF THE INTERIOR  
BUREAU OF LAND MANAGEMENT  
Washington, D. C. November 12, 1965

This plat is strictly conformable to the approved field notes, and the survey, having been correctly executed in accordance with the requirements of law and the regulations of this Bureau, is hereby accepted.

Lat. 39°32'52.5"N  
Long. 116°30'27.4"W

For the Director.  
*E. J. Remington*  
Chief, Division of Engineering

1779-B

T.20N., R.48E.