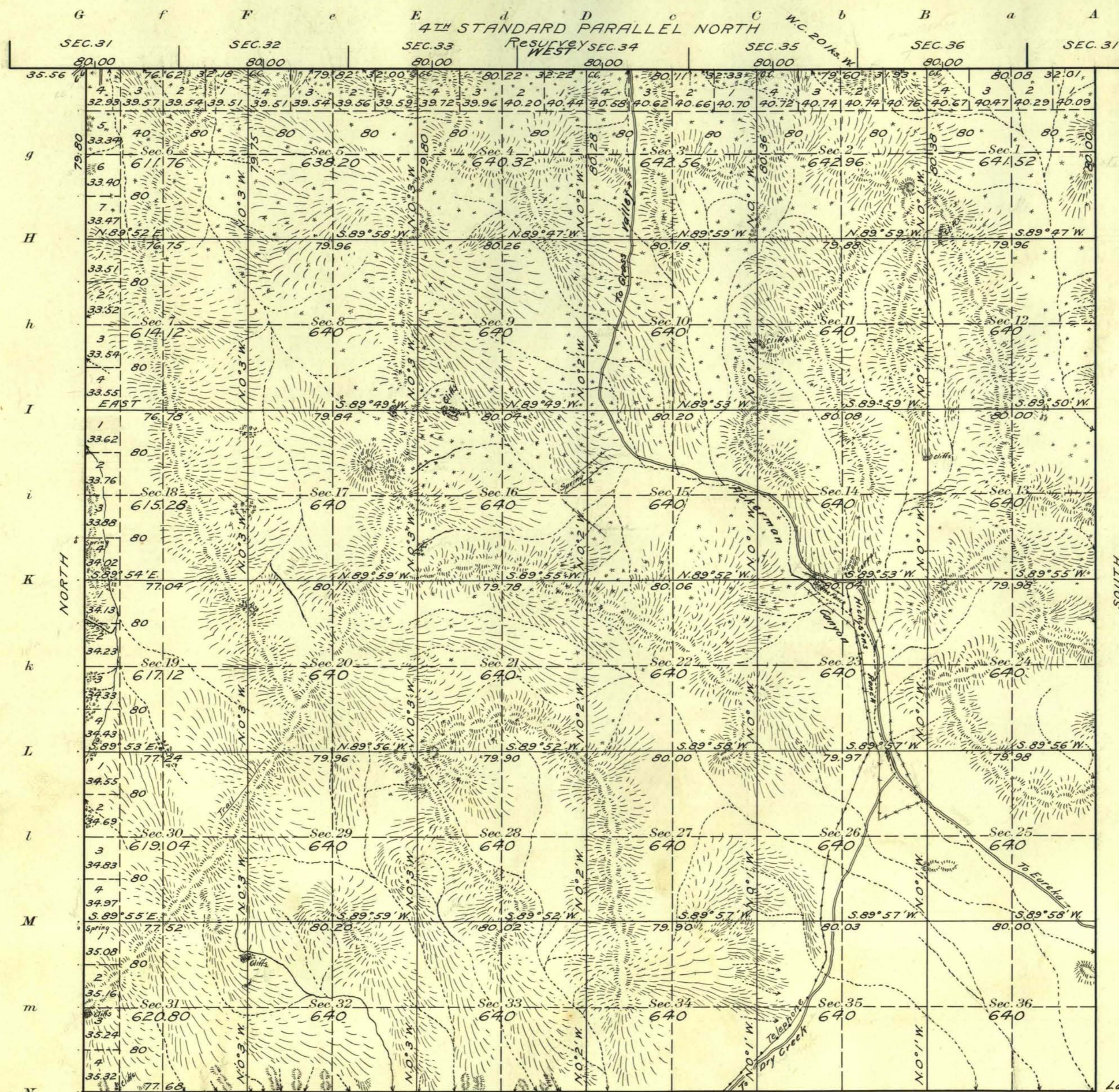


Township N° 20 North Range N° 47 East Mt Diablo Meridian, Nevada

Survey Accepted Oct 15, 1917
G.L.O.



NOTE
x Surveyor reports traces of minerals in Secs
27, 28, 33 and 34

Areas in Acres	
Public Land	22903.68
Indian Reservation	
Indian Allotments	
Mineral Claims	
Water Surface	
Total Area	22903.68

Latitude 39° 33' N. Longitude 116° 37' W.
Scale 40 Chains to an inch
Mean Magnetic Declination 17° 27' E.

Surveys Designated	By Whom Surveyed	Group		Amount of Surveys		When Surveyed	
		No.	Date of Instructions	Mls.	chs.	fts.	When Surveyed
4th St. Par. N. (res.)	H. W. Reppert	36	May 7, 1915	5	76	45	
E. Boundary	W. R. Johnston	"	"	6	00	00	
S. "	"	"	"	5	77	68	July 24, 1915 Aug. 18, 1915
W. "	"	"	"	5	79	80	
Subdivisions	"	"	"	59	66	23	

The above map of Township No. 20 North Range No. 47 East of the Mt Diablo Meridian Nevada is strictly conformable to the field notes of the survey thereof on file in this office, which have been examined and approved
U. S. Surveyor General's Office.
Reno, Nevada April 23, 1917

John B. Sullivan
Surveyor General.