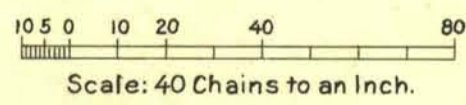
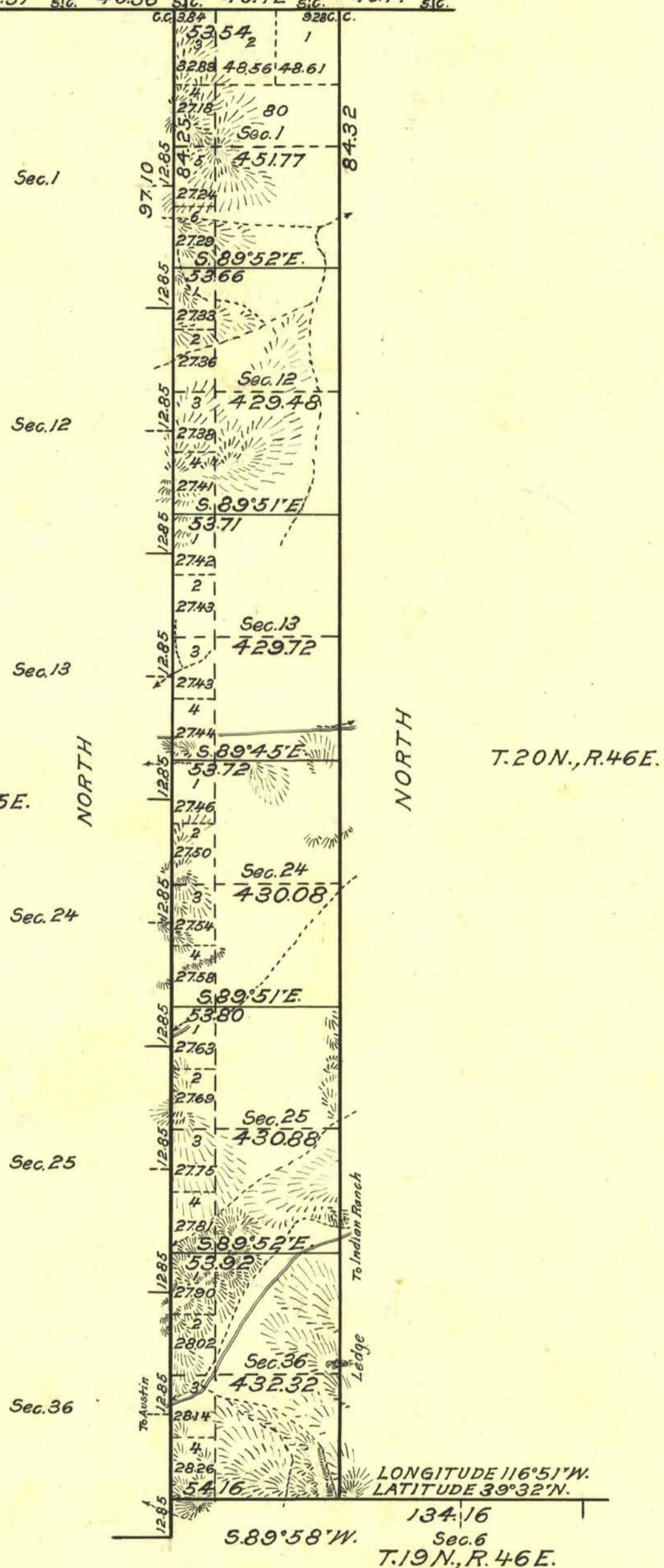


TOWNSHIP N° 20 NORTH RANGE N° 4 5/2 EAST MOUNT DIABLO MERIDIAN NEVADA.

FOURTH STANDARD PARALLEL NORTH
T.21 N., R.45 E. DEPENDENT RESURVEY

Sec. 36 Sec. 31
S.89°56'W. S.89°57'W. N.89°54'W. N.89°45'W.
s.c. 40.57 s.c. 40.38 s.c. 40.42 s.c. 40.44 s.c.



Mean Magnetic Declination, Area Surveyed, 2604.25 Acres.

LINES DESIGNATED	BY WHOM SURVEYED	NO	GROUP DATE	MILEAGE		WHEN SURVEYED	
				MLS.	CHS.	BEGUN	COMPLETED
Exteriors	George W. Ridgway	91	Feb. 17, 1921	10	31.9	June 27, 1924	Aug. 1, 1924
Subdivisional	" " "	"	" " "	2	01.5	July 2, "	" 1, "
Exteriors	Edie S.C. Smith	"	" " "	3	04.3	Aug. 9, "	" 9, "
Subdivisional	" " "	"	" " "	1	274	" " "	" " "

Office of U.S. Supervisor of Surveys
 Denver, Colorado, June 8, 1927
 The above plat of Township No. 20 North Range No. 4 5/2 East of the Mount Diablo Meridian, Nevada, is strictly conformable to the field notes of the survey thereof which have been examined and approved.

Quintin Johnson
 U.S. Supervisor of Surveys.

DEPARTMENT OF THE INTERIOR
 GENERAL LAND OFFICE
 Washington, D.C., July 7, 1927.
 The survey represented by this plat having been correctly executed in accordance with the requirements of law and the regulations of this office, is hereby accepted.

D.K. Canutt
 Acting Assistant Commissioner.

W.C.P.
 T.20 N., R.45 1/2 E.