

ORIGINAL

TOWNSHIP 20 NORTH, RANGE 30 EAST, OF THE MOUNT DIABLO MERIDIAN, NEVADA
DEPENDENT RESURVEY AND SUBDIVISIONS

A history of surveys is contained in the field notes.

This plat represents a dependent resurvey of a portion of the south boundary and a portion of the subdivisional lines designed to restore the corners in their original locations according to the best available evidence, and the subdivision of sections 33, 34, and 35, T. 20 N., R. 30 E., Mount Diablo Meridian, Nevada.

Lottings and areas are as shown on the plat approved October 16, 1868.

Survey executed by Neil R. Forsyth, David E. Provost, and Ronald E. Williams, Cadastral Surveyors, beginning October 12, 1978, and completed February 5, 1979, under Special Instructions dated October 2, 1978, for Group No. 568, Nevada.

Surveyed by

E. B. Monroe

in 1868

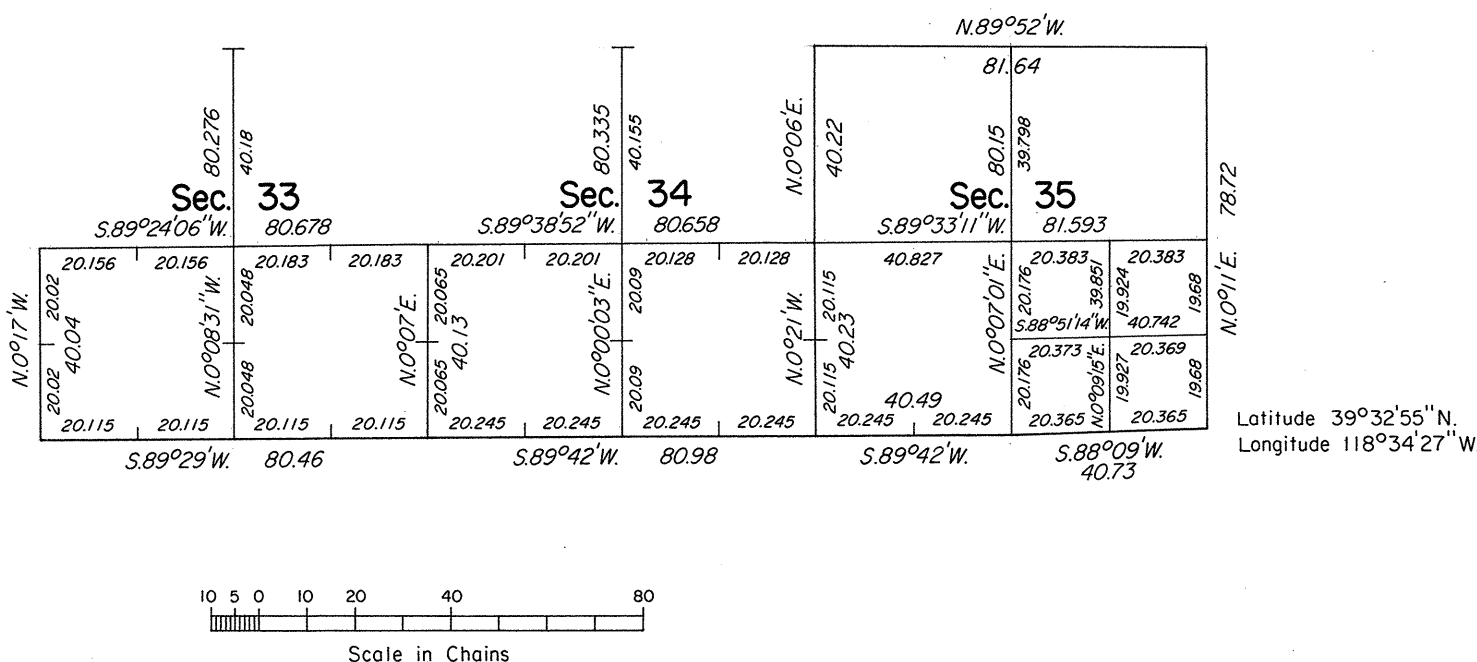
UNITED STATES DEPARTMENT OF THE INTERIOR
BUREAU OF LAND MANAGEMENT
Denver, Colorado July 24, 1980

This plat is strictly conformable to the approved field notes, and the survey, having been correctly executed in accordance with the requirements of law and the regulations of this Bureau, is hereby accepted.

For the Director

J. Voorhees

Chief, Cadastral Survey
Examination and Approval Staff



Mean Magnetic Declination
18°E.

5
6

301