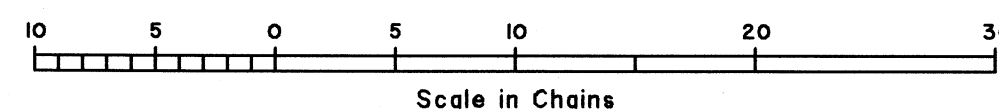
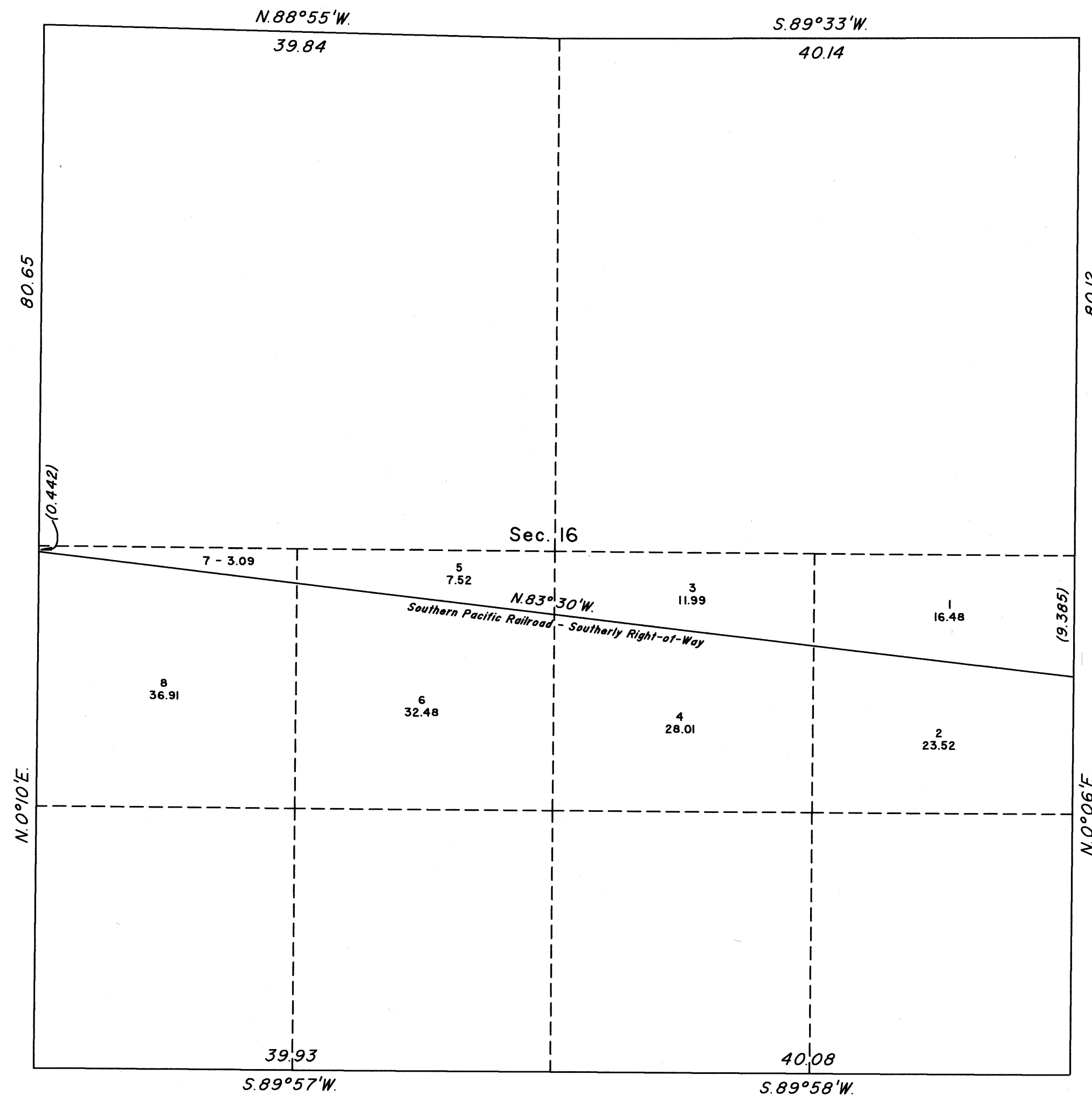
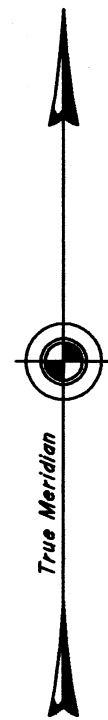


ORIGINAL

OFFICIALLY FILED  
NEVADA STATE OFFICE  
at 10:00 AM on DEC 18 2023

TOWNSHIP 20 NORTH, RANGE 25 EAST, OF THE MOUNT DIABLO MERIDIAN, NEVADA  
SUPPLEMENTAL PLAT OF SECTION 16



This plat showing amended lottings in Sec 16, Township 20 North, Range 25 East, Mount Diablo Meridian, Nevada is based upon the plat accepted April 9, 1935, and verified with centerline data obtained from Railroad right-of-way Grant Nev 043236.

Plat prepared under the oversight of Clarence D. Strickland, Supervisory Cadastral Surveyor, beginning October 4, 2023, and completed December 11, 2023, pursuant to Special Instructions dated September 21, 2023, and Assignment Instructions dated September 21, 2023 for Group No. 1009, Nevada.

Except as shown hereon, the areas are as shown on the plat accepted April 9, 1935

UNITED STATES DEPARTMENT OF THE INTERIOR  
BUREAU OF LAND MANAGEMENT

Reno, Nevada December 14, 2023

This plat, showing amended lottings, is based upon the official records, and having been correctly prepared in accordance with the requirements of the law and the regulations of the Bureau, is hereby accepted.

For the Director

*Mahmud H. Hummer*

Chief Cadastral Surveyor for Nevada

RPM

T.20N., R.25E., M.D.M.