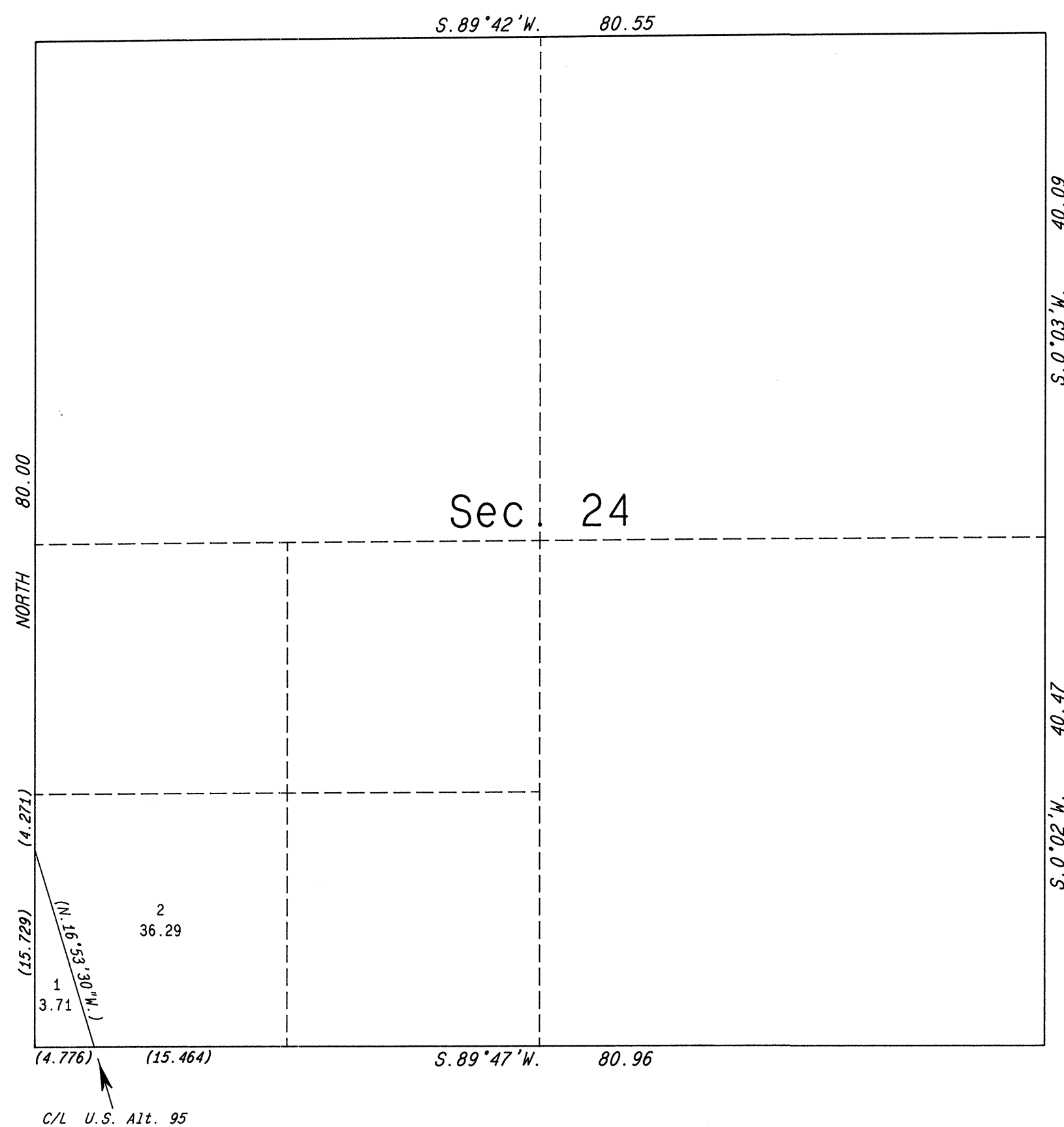
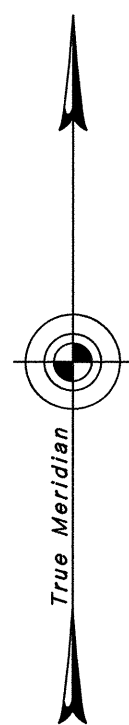


TOWNSHIP 20 NORTH, RANGE 24 EAST, OF THE MOUNT DIABLO MERIDIAN, NEVADA
SUPPLEMENTAL PLAT OF SECTION 24



This plat, showing a subdivision of the SW1/4 SW1/4 of sec. 24, T. 20 N., R. 24 E., Mount Diablo Meridian, Nevada is based upon the plats approved February 8, 1879 and January 19, 1888, the plat of T. 20 N., R. 25 E., accepted April 9, 1935, and the Nevada Department of Highways right-of-way application CC 020699 dated June 22, 1938.

UNITED STATES DEPARTMENT OF THE INTERIOR
BUREAU OF LAND MANAGEMENT
Reno, Nevada July 8, 1986

This plat, showing amended lottings, is based upon the official records and, having been correctly prepared in accordance with the regulations of this Bureau, is hereby accepted.

For the Director

Lael E. Bland

Chief Cadastral Surveyor

