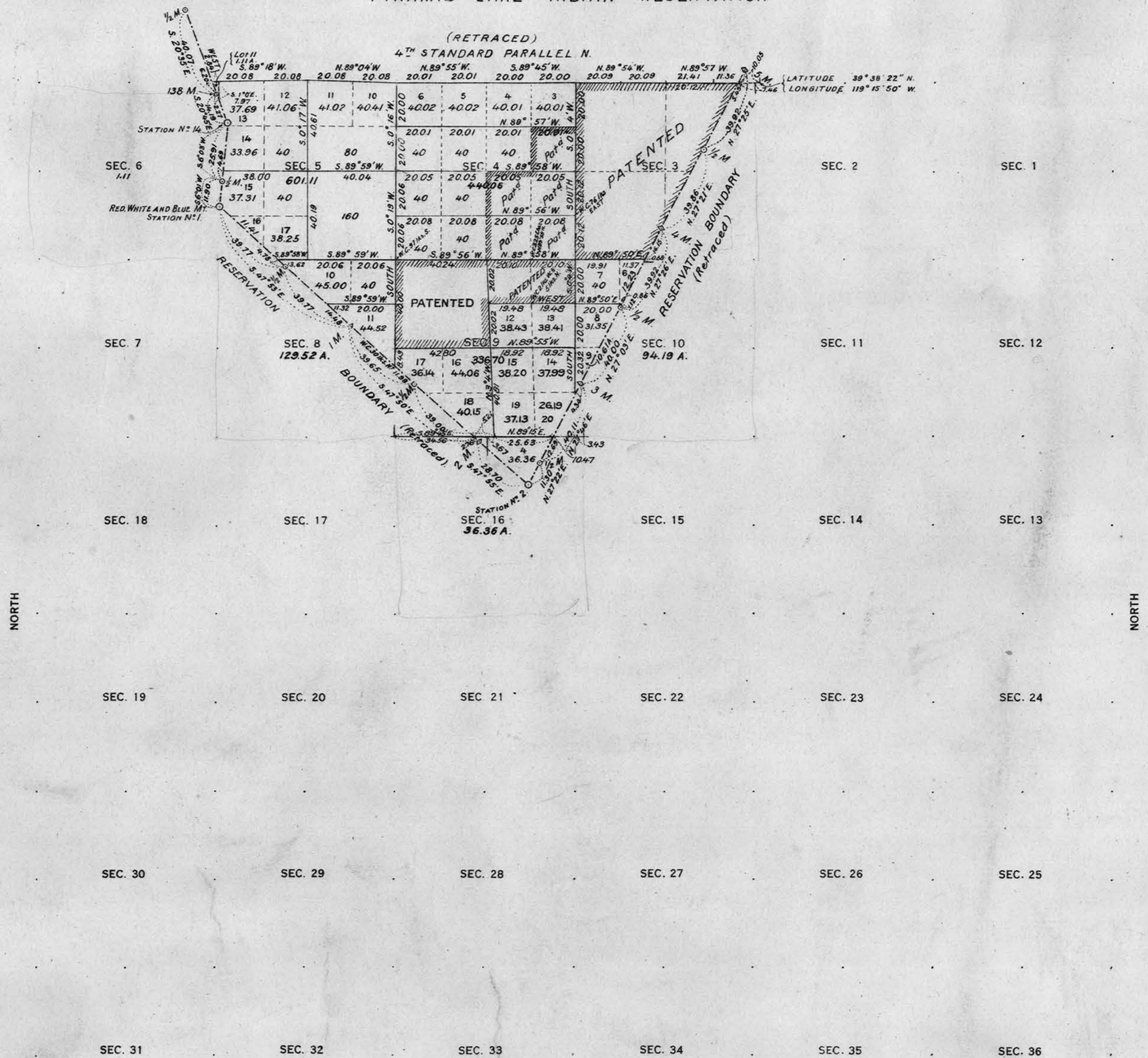


RESURVEY OF TOWNSHIP NO. 20 NORTH, RANGE NO. 24 EAST OF MOUNT DIABLO MERIDIAN, NEVADA.
PYRAMID LAKE INDIAN RESERVATION



Scale 40 Chains to an Inch.

SURVEYS DESIGNATED	BY WHOM SURVEYED	AMOUNT OF SURVEYS M. CHS. LKS.	WHEN SURVEYED
STANDARD LINES	G. P. HARRINGTON.	_____	MAY 22, 1911.
TOWNSHIP		_____	
SUBDIVISION		_____	MAY 21-26, 1911.
MEANDER		_____	
BOUNDARY		_____	MAY 23, 1911.
SUBDIVISION LINES CORRECTED	F. E. JOY.	_____	AUG. 25-26, 1913.

A. F. DUNNINGTON, Topographer in charge. Instructions April 27, 1911. and May 10, 1913.

PLAT "A".
TOTAL NUMBER OF ACRES 1639.05
See Plat "B" for topography and culture.

G.P.T.
THE ABOVE MAP OF TOWNSHIP NO. 20 NORTH, RANGE NO. 24 EAST OF MOUNT DIABLO MERIDIAN, NEVADA, IS STRICTLY CONFORMANT TO THE FIELD NOTES OF THE SURVEY THEREOF ON FILE IN THIS OFFICE, WHICH HAVE BEEN EXAMINED AND APPROVED
U. S. GENERAL LAND OFFICE
WASHINGTON, D. C.
DECEMBER 31, 1913
[Signature]
Commissioner.