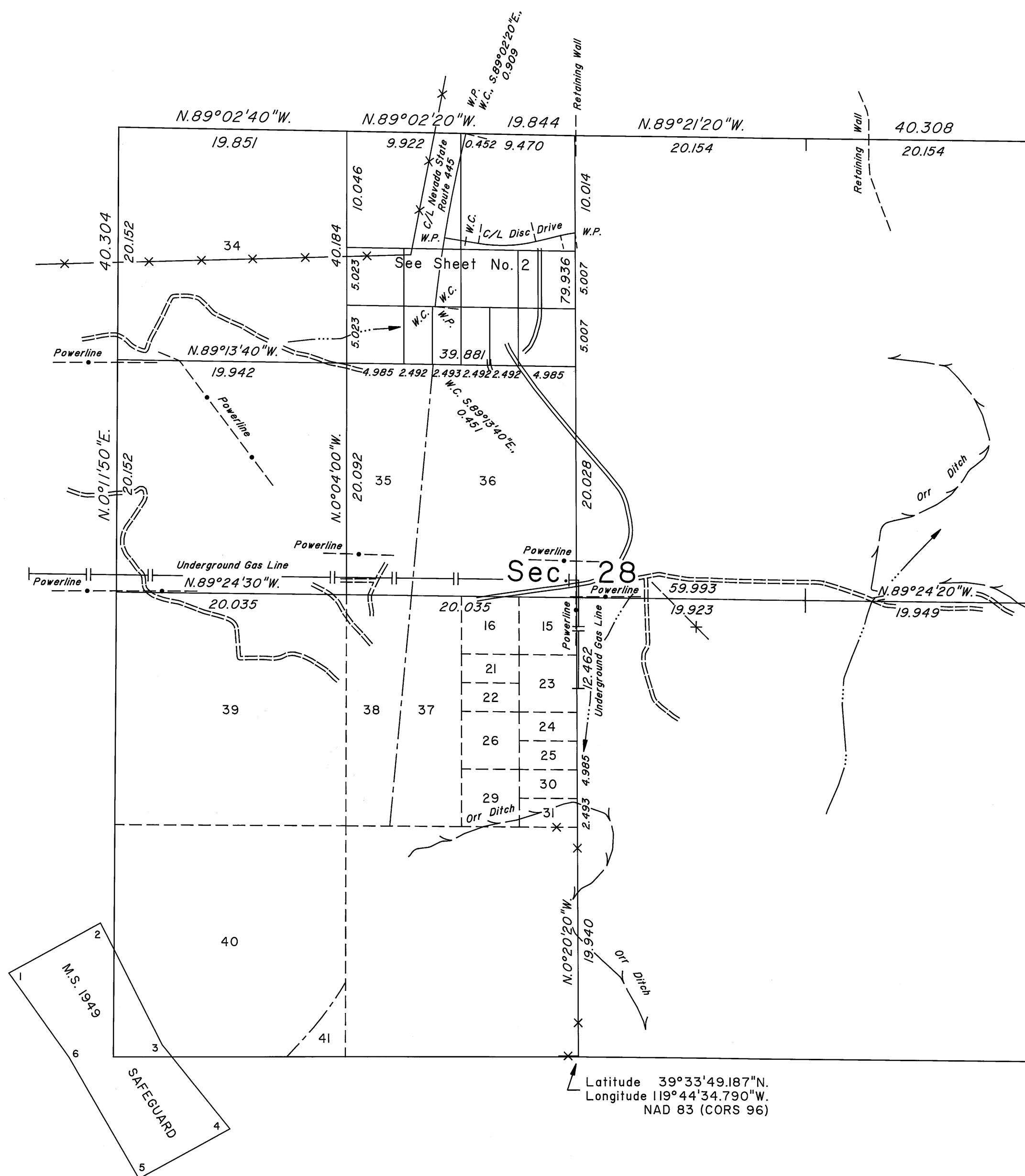
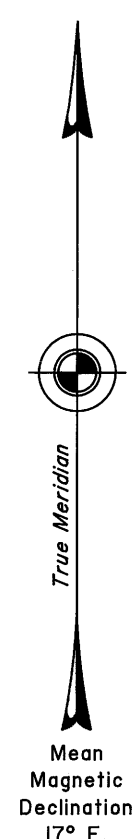


TOWNSHIP 20 NORTH, RANGE 20 EAST, OF THE MOUNT DIABLO MERIDIAN, NEVADA  
DEPENDENT RESURVEY, SUBDIVISION AND METES-AND-BOUNDS SURVEY

OFFICIALLY FILED  
NEVADA STATE OFFICE  
at 10:00 AM on February 14, 2008



A history of surveys is contained in the field notes.

This plat, in two sheets, represents the dependent resurvey of a portion of the subdivisional lines designed to restore the corners in their true original locations according to the best available evidence, the subdivision of section 28, and metes-and-bounds surveys in section 28, Township 20 North, Range 20 East, Mount Diablo Meridian, Nevada.

Except as indicated hereon, the lottings and areas are as shown on the plats approved June 30, 1872, February 19, 1907, and May 25, 1908, the plat accepted February 25, 1980, and the supplemental plats accepted July 31, 1989 and January 13, 1994.

For those surveyed lines not showing bearing and distances, refer to the official record of 1980.

Survey executed by Don R. Aschenbach, Cadastral Surveyor, beginning February 15, 2007, and completed September 19, 2007, pursuant to Special Instructions dated January 19, 2007, for Group No. 842, Nevada.

UNITED STATES DEPARTMENT OF THE INTERIOR  
BUREAU OF LAND MANAGEMENT

Reno, Nevada February 12, 2008

This plat is strictly conformable to the approved field notes, and the survey, having been correctly executed in accordance with the requirements of law and the regulations of this Bureau, is hereby accepted.

For the Director

*David D. Morlan*

Chief Cadastral Surveyor, Nevada

T.20N., R.20E., M.D.M.