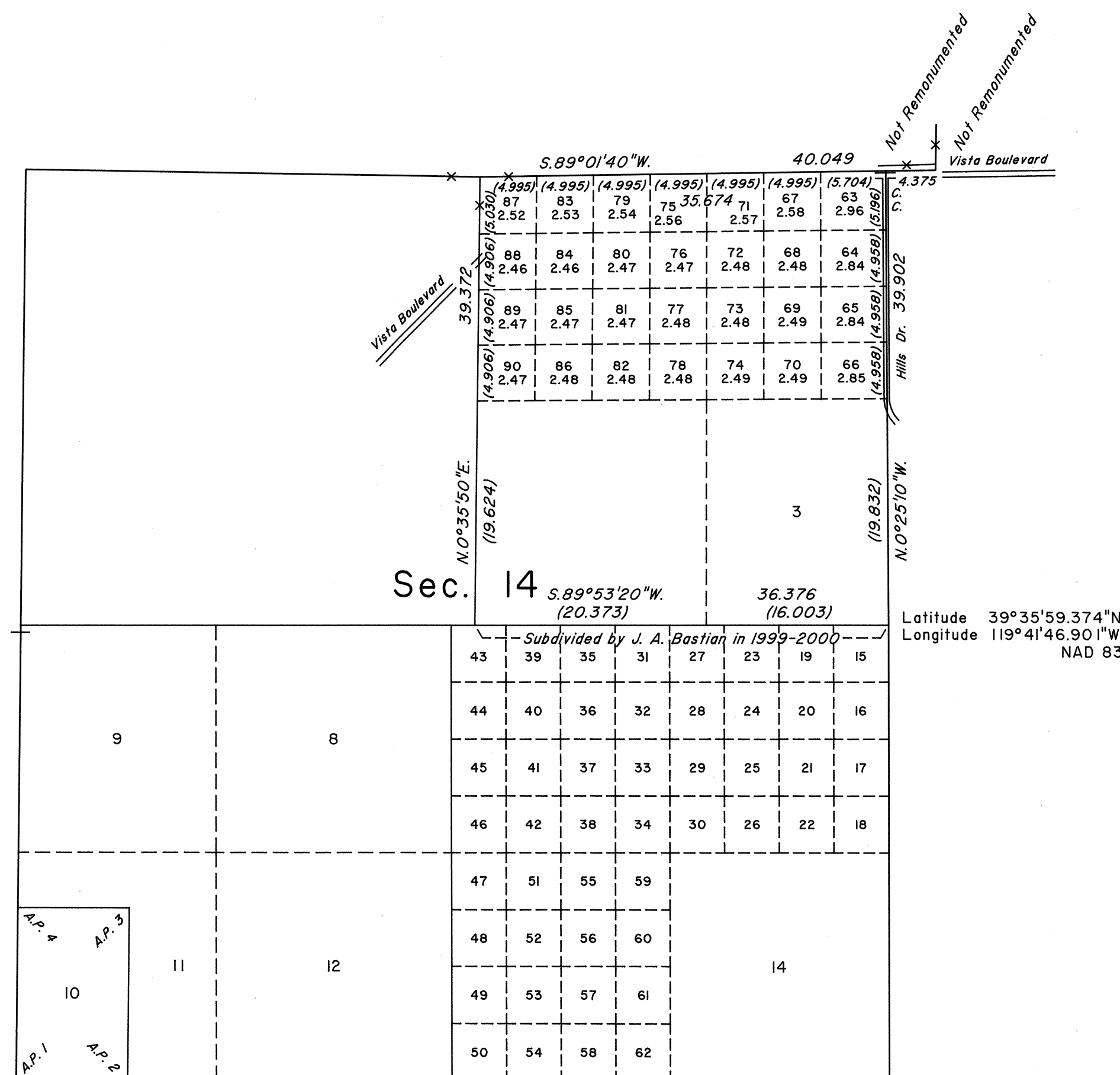
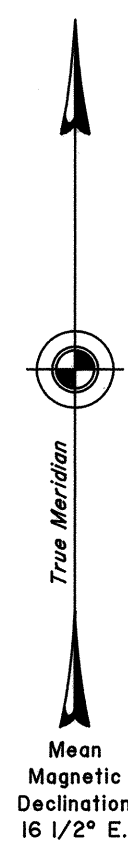


TOWNSHIP 20 NORTH, RANGE 20 EAST, OF THE MOUNT DIABLO MERIDIAN, NEVADA  
DEPENDENT RESURVEY AND SUBDIVISION

Sec. 11



A history of surveys is contained in the field notes.

This plat represents the dependent resurvey of a portion of the subdivisional lines designed to restore the corners in their true original locations according to the best available evidence, and the subdivision of section 14, Township 20 North, Range 20 East, Mount Diablo Meridian, Nevada.

Except as indicated hereon, the lottings and areas are as shown on the plats approved June 30, 1872, February 19, 1907 and May 25, 1908, the plat accepted March 17, 2000, and the supplemental plat accepted November 17, 2000.

For those lines not showing bearings and distances, refer to the prior official records.

Survey executed by Ronald E. Williams, Cadastral Surveyor, beginning July 7, 2000, and completed July 7, 2000, pursuant to Special Instructions dated July 3, 2000, for Group No. 791, Nevada.

UNITED STATES DEPARTMENT OF THE INTERIOR  
BUREAU OF LAND MANAGEMENT

Reno, Nevada November 29, 2000

This plat is strictly conformable to the approved field notes, and the survey, having been correctly executed in accordance with the requirements of law and the regulations of this Bureau, is hereby accepted.

For the Director

*Robert H. Thompson*

Acting Chief Cadastral Surveyor, Nevada

T.20N., R.20E., M.D.M.