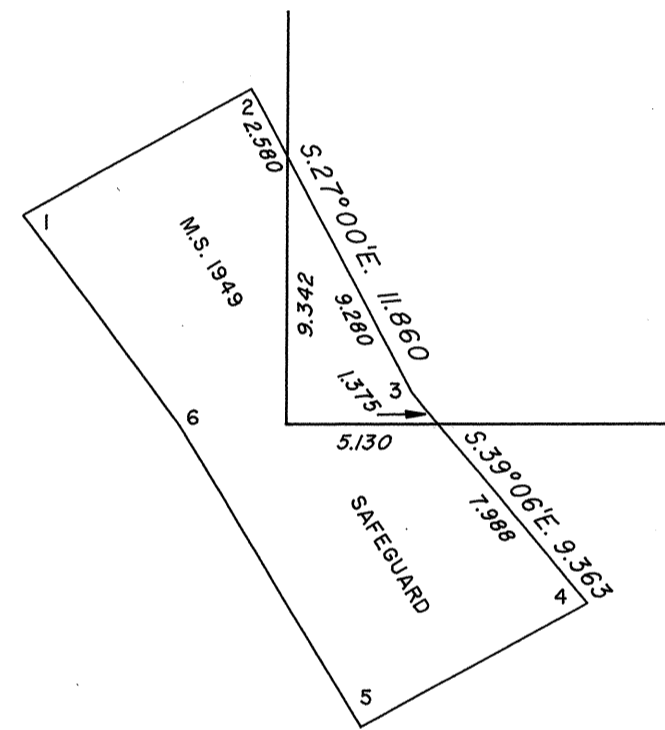
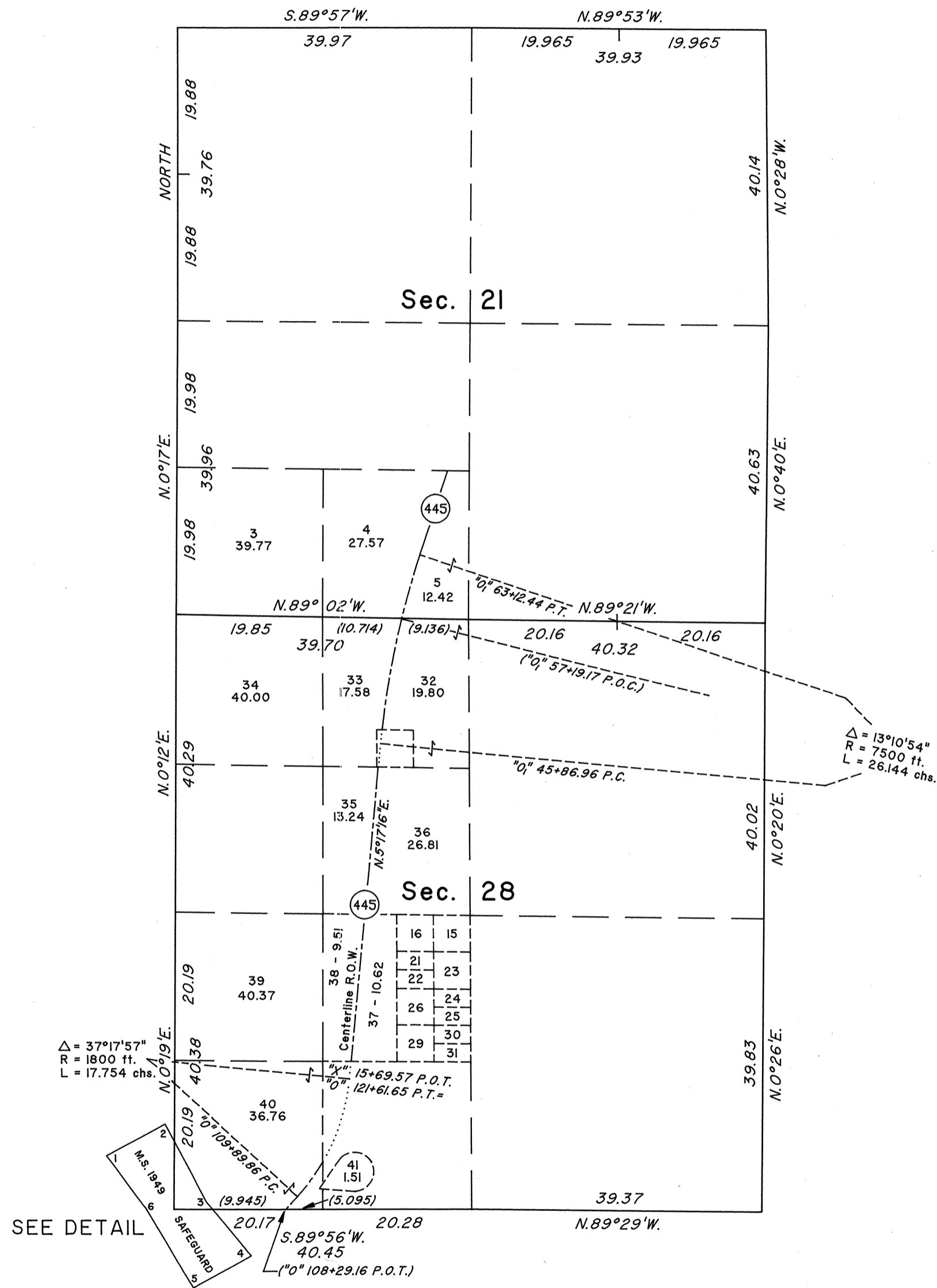


TOWNSHIP 20 NORTH, RANGE 20 EAST, OF THE MOUNT DIABLO MERIDIAN, NEVADA
SUPPLEMENTAL PLAT OF SECTIONS 21 AND 28



DETAIL
(NOT TO SCALE)



This plat, showing amended lottings in secs. 21 and 28, Township 20 North, Range 20 East, Mount Diablo Meridian, Nevada, is based upon the plats approved June 30, 1872, and February 19, 1907, the composite plat approved May 25, 1908, the plat accepted February 25, 1980, the supplemental plat accepted July 31, 1989, the mineral survey records, and State of Nevada R/W application file No. Nev-047623.

The data shown in parentheses along section lines and depicting highway information are derived by calculation.

UNITED STATES DEPARTMENT OF THE INTERIOR
BUREAU OF LAND MANAGEMENT

Reno, Nevada January 13, 1994

This plat, showing amended lottings, is based upon the official records, and having been correctly prepared in accordance with the regulations of this Bureau, is hereby accepted.

For the Director

Chief Cadastral Surveyor, Nevada