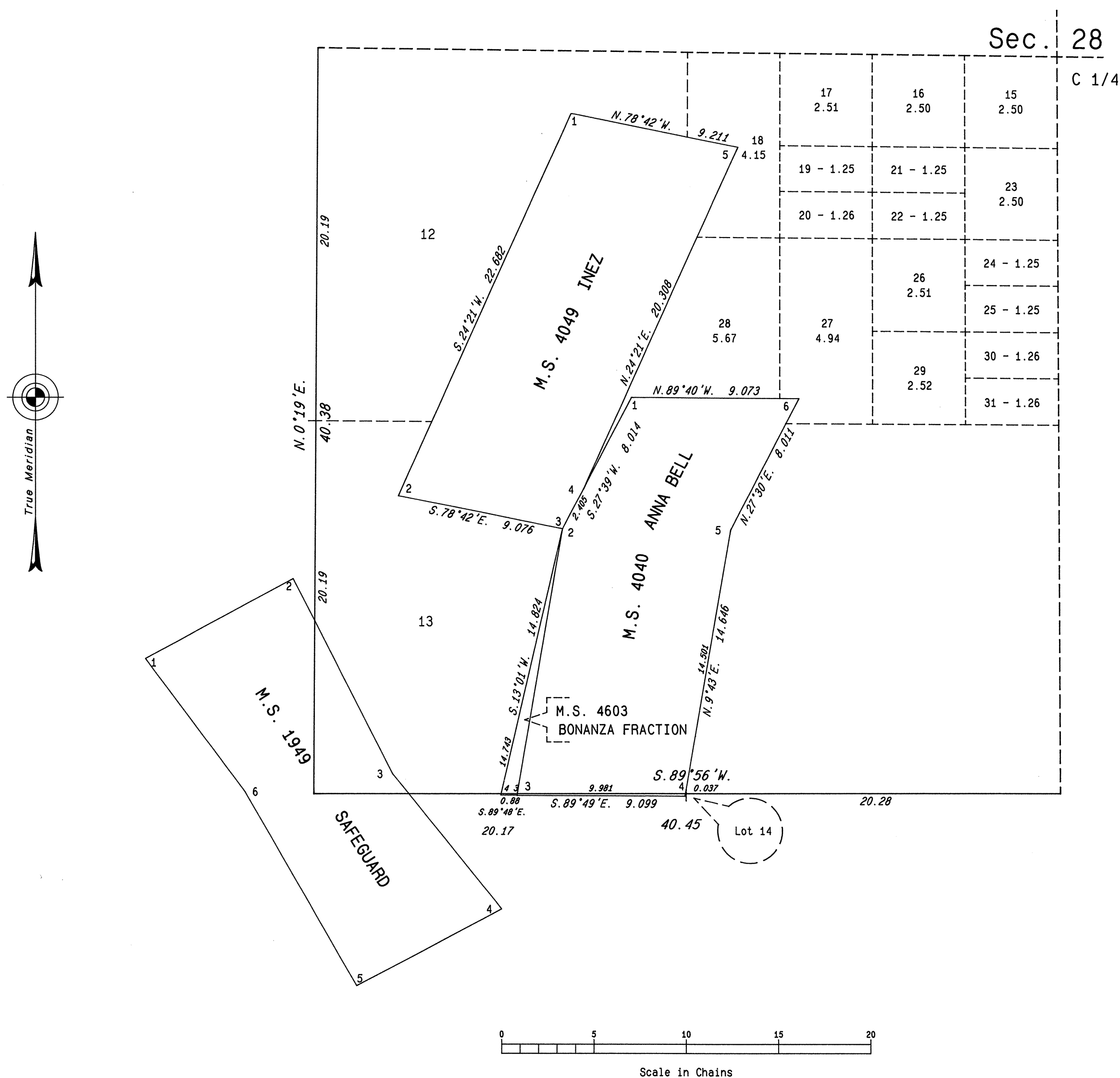


ORIGINAL

TOWNSHIP 20 NORTH, RANGE 20 EAST, OF THE MOUNT DIABLO MERIDIAN, NEVADA

SUPPLEMENTAL PLAT OF THE SW1/4 SECTION 28



This plat, showing a subdivision of original lot 11, sec. 28, T. 20 N., R. 20 E., Mount Diablo Meridian, Nevada, is based upon the plats approved June 30, 1872, February 19, 1907, and May 25, 1908, the supplemental plat accepted April 17, 1903, the plat accepted February 25, 1980, and the mineral survey records.

UNITED STATES DEPARTMENT OF THE INTERIOR
BUREAU OF LAND MANAGEMENT

Reno, Nevada

July 31, 1989

This plat, showing amended lottings, is based upon the official records and, having been correctly prepared in accordance with the regulations of this Bureau, is hereby accepted.

For the Director

Lacel E. Bland

Chief Cadastral Surveyor