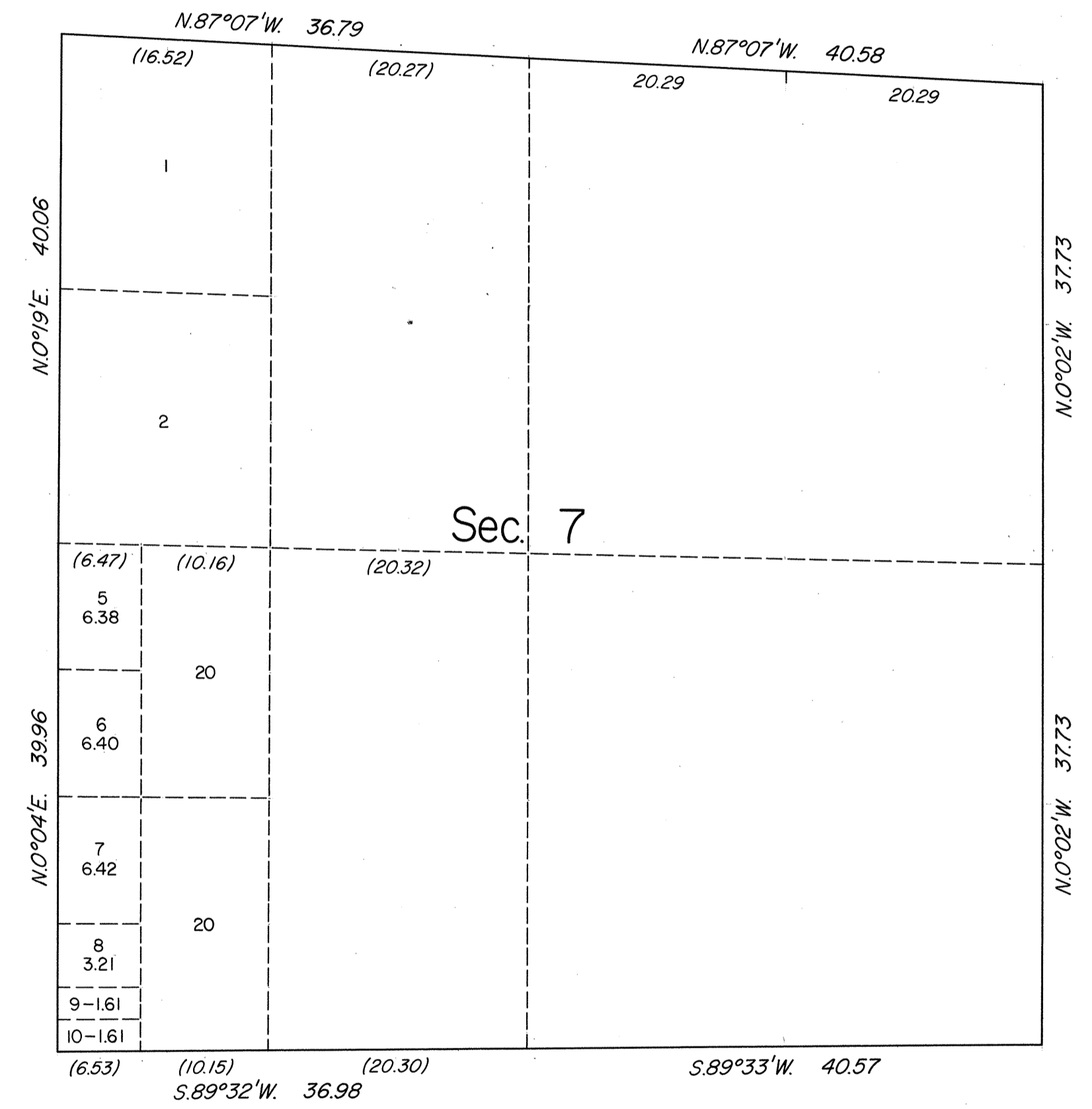
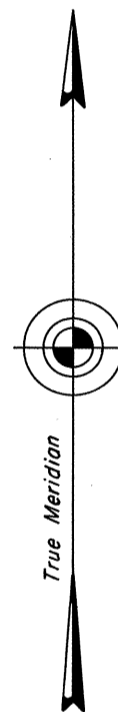


TOWNSHIP 20 NORTH, RANGE 20 EAST, OF THE MOUNT DIABLO MERIDIAN, NEVADA
SUPPLEMENTAL PLAT OF SECTION 7

OFFICIALLY FILED
NEVADA STATE OFFICE
10:00 A.M. DECEMBER 27, 1984



This plat, showing a subdivision of original lots 3 and 4, sec. 7, T. 20 N., R. 20 E., Mount Diablo Meridian, Nevada, is based upon the plats approved June 30, 1872, and May 25, 1908, and the plat accepted February 25, 1980.

UNITED STATES DEPARTMENT OF THE INTERIOR
BUREAU OF LAND MANAGEMENT

Reno, Nevada December 12, 1984

This plat, showing amended lottings, is based upon the official records and, having been correctly prepared in accordance with the regulations of this Bureau, is hereby accepted.

For the Director

Lace E. Bland

Chief Cadastral Surveyor

